



Tamar

G.J. Gardner. HOMES



RESORT



URBAN



HAMPTONS



CLASSIC



Tamar

The Tamar design exclusive to G.J. Gardner Homes is designed to suit sites that slope down towards the rear of the site.

This four-bedroom home features an open plan, upper floor living space the whole family can enjoy. A kitchen, dining, and family with covered alfresco balcony to the rear takes advantage of views and breezes achieved by elevated living.

A split bedroom setup of two bedrooms upstairs and two downstairs provides a unique layout that gives everyone a bit of space and privacy. A master bedroom complete with ensuite and walk in robe is at the rear of the home while another is positioned at the front with a separate fully equipped powder room, ideal as a guest suite.

The lower floor is perfect for the teenager's space to retreat including a family bathroom, laundry and a central activity room that opens to the rear outdoor areas.

Images in this brochure may depict landscaping, fences and upgraded fixtures, features or finishes which are not included. For availability and pricing of these items please discuss with your new home consultant.

Tamar 249

4 3 2

Lower Floor

Living 81.5 m²

Total 81.5 m²

Upper Floor

Living 104.4 m²

Alfresco 18.9 m²

Garage 36.3 m²

Porch 2.5 m²

Void 5.4 m²

Total 167.5 m²

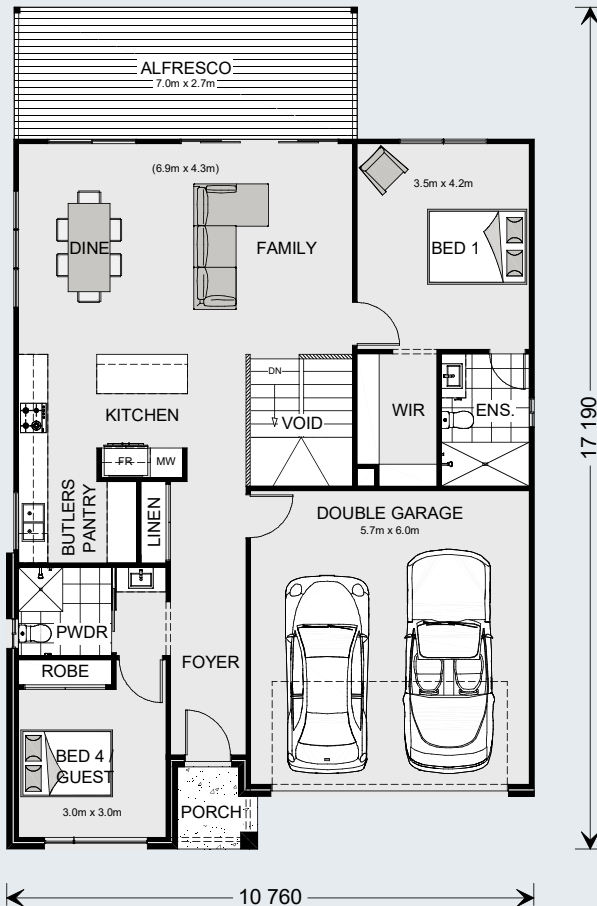
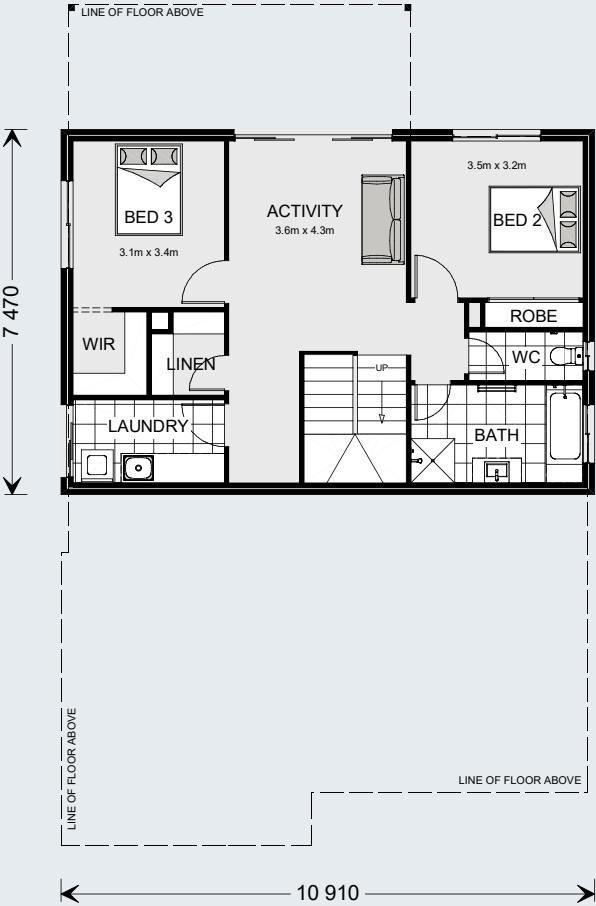
Grand Total 249.0 m²



The North Point

Orientate your floorplan with the main living areas positioned due north to ensure your home is optimised for the sun during the day, as well as throughout the seasons.

Images in this brochure may depict landscaping, fences and upgraded fixtures, features or finishes which are not included. Construction and site works shown are indicative only and may vary subject to individual site conditions. For availability and pricing of these items please discuss with your new home consultant.



Tamar 216

4 3 2

Lower Floor

Living 69.0 m²

Total 69.0 m²

Upper Floor

Living 92.3 m²

Alfresco 10.3 m²

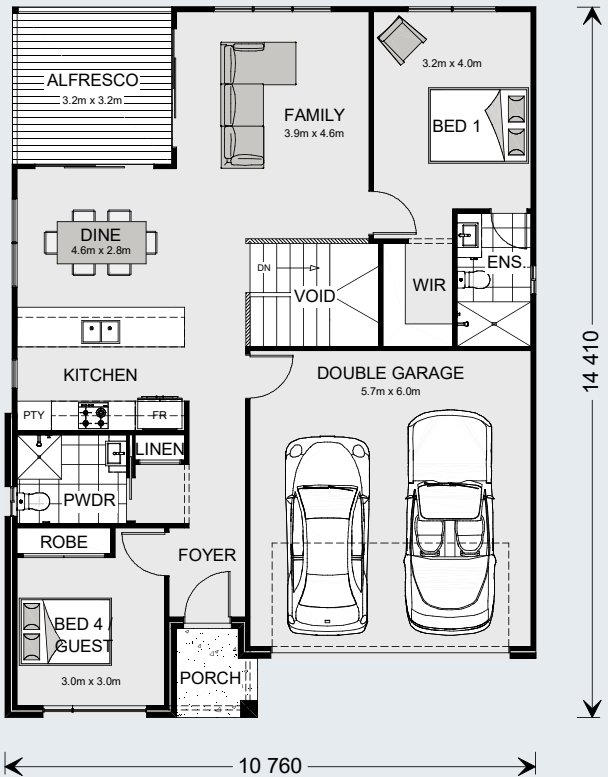
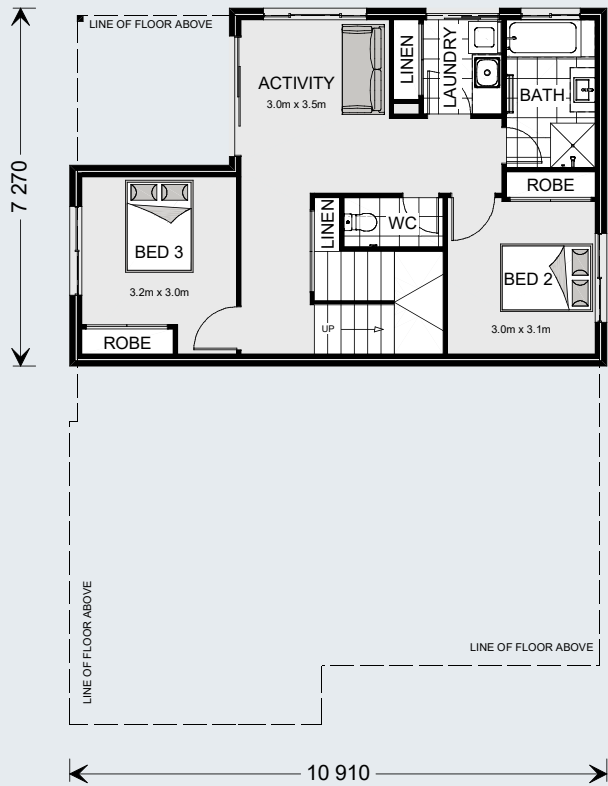
Garage 36.3 m²

Porch 2.7 m²

Void 5.5 m²

Total 147.1 m²

Grand Total 216.1 m²







G.J. Gardner. HOMES

gjgardner.com.au