



Laguna

G.J. Gardner. HOMES

Laguna Design



Our Difference

What continues to let G.J. Gardner Homes stand out from other builders is the G.J. Way a level of quality that extends to all we do.

Our homes have been mindfully crafted by our teams of architects and designers. Drawing from today's leading home trends, Australian lifestyles and a goal to streamline living, we're world-renowned for our designs. Through our wide and well-connected franchise system, our designs are constantly inspired by real communities and their ways of living across the country. Building hundreds of family homes each year gives us unrivalled knowledge of what makes a house a home.

Visit our 3D tours to explore our beautiful home range at gigardner.com.au

Images in this brochure may depict landscaping, fences and upgraded fixtures, features or finishes which are not included. For availability and pricing of these items please discuss with your new home consultant.



Laguna

The Laguna boasts a striking split-level facade and is designed beautifully to complement sites that slope down toward the rear of the site.

Set over three levels, it features a private office and media room on the entry level with a double garage before continuing downstairs to the open-plan main living zone. Entertaining is a delight thanks to a well-appointed kitchen with butler's pantry and island bench which is complimented by the open plan family and dining room that wraps around the outdoor alfresco. There is also a guest bedroom and bathroom set off the main living for privacy and functionality.

On the upper level are the remaining bedrooms with great storage, including the master suite with stylish ensuite, walk-in robe and a private family retreat. This design offers the modern family all the luxury extras and space that will have everyone living well.

Images in this brochure may depict landscaping, fences and upgraded fixtures, features or finishes which are not included. For availability and pricing of these items please discuss with your new home consultant.

Laguna 281

5 3.5 2

Ground Floor

Living	124.6 m²
Garage	38.9 m²
Alfresco	13.6 m²
Porch	5.1 m²
Total	182.2 m²

Upper Floor

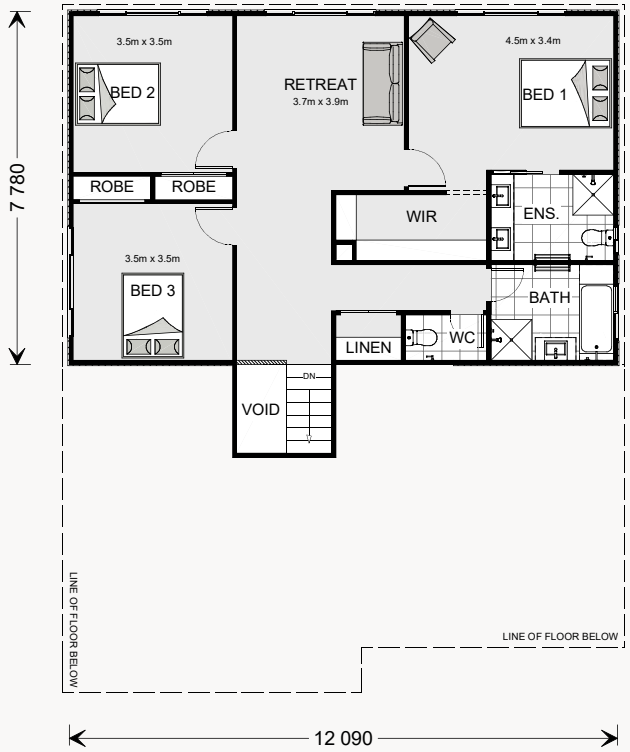
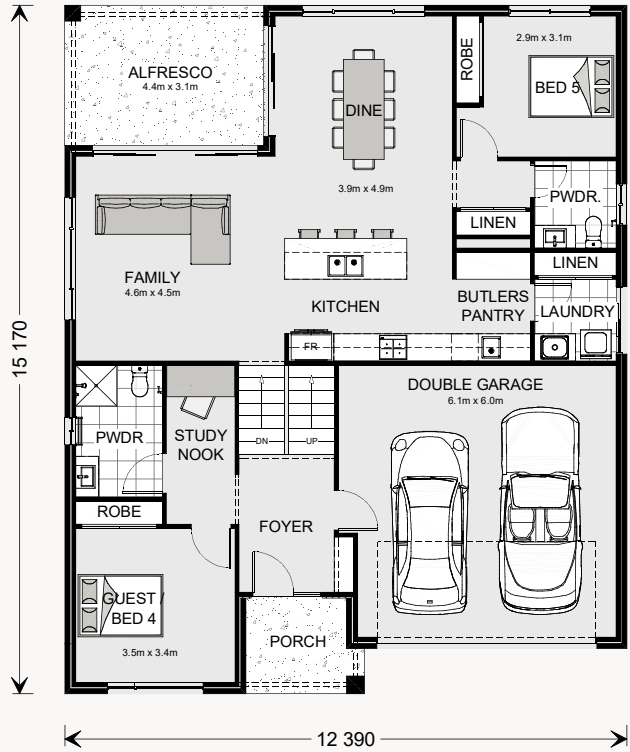
Living	94.6 m²
Void	4.1 m²
Total	98.7 m²
Grand Total	280.9 m²



The North Point

Orientate your floorplan with the main living areas positioned due north to ensure your home is optimised for the sun during the day, as well as throughout the seasons.

By getting the right floor plan for your block, taking into consideration the north point, you will get the best out of the land that you've chosen.



Laguna 230

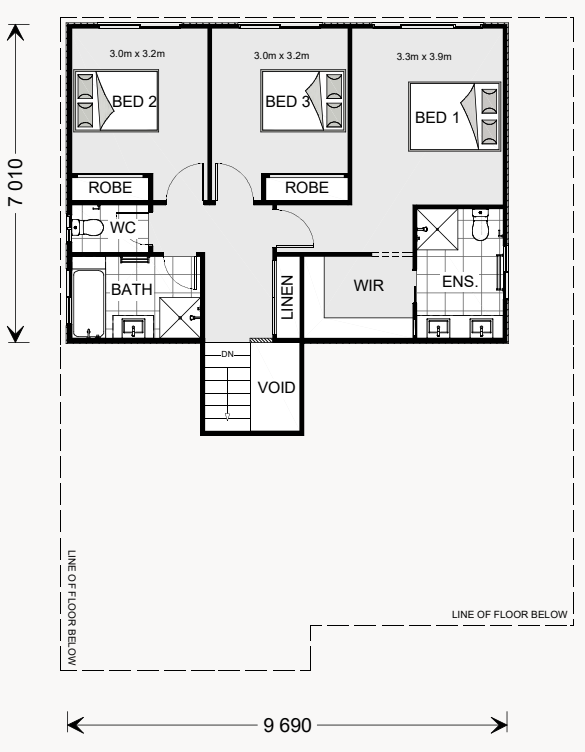
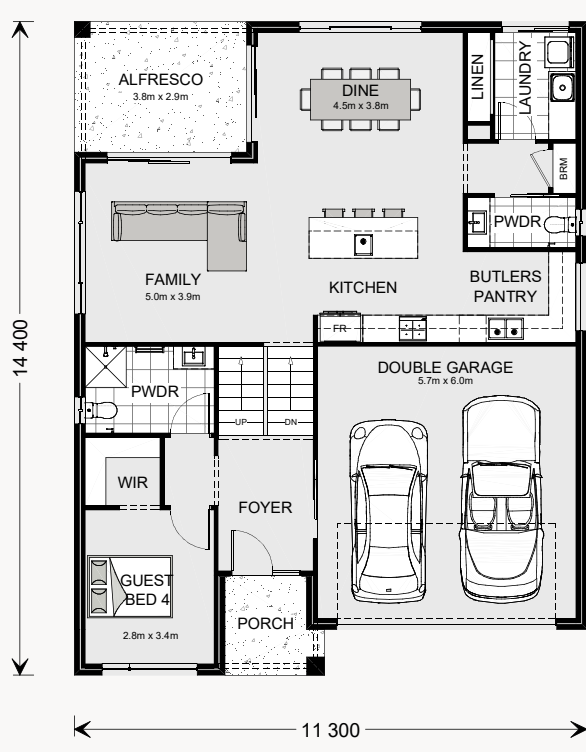
4 3.5 2

Ground Floor

Living	104.2 m²
Garage	37.4 m²
Alfresco	10.9 m²
Porch	4.4 m²
Total	156.9 m²

Upper Floor

Living	68.5 m²
Void	4.1 m²
Total	72.6 m²
Grand Total	229.5 m²







G.J. Gardner. HOMES

gjjardner.com.au