



Windsor

G.J. Gardner. HOMES



RESORT



URBAN



HAMPTONS



CLASSIC



Windsor

Cleverly designed to suit sites that slope towards the front, the Windsor provides the perfect combination of separation and open plan living with simplicity and space at its heart.

The upper floor provides large open plan main living spaces that seamlessly transition from front to back with sliding doors opening to the rear outdoor spaces on the high side of the site. With a large, centralised kitchen that flows through to a butler's pantry, entertaining is a dream.

This four-bedroom home offers ample space for the whole family, including a lower floor bedroom and bathroom that is ideal for teenagers or guests with a study at the front.

A striking yet elegant design, the Windsor encourages natural light and cross breezes to all areas of this home.

Images in this brochure may depict landscaping, fences and upgraded fixtures, features or finishes which are not included. For availability and pricing of these items please discuss with your new home consultant.

Windsor 277

4 3.5 2

Lower Floor

Living	50.8 m ²
Garage	39.1 m ²
Porch	2.5 m ²

Total 92.4 m²

Upper Floor

Living	164.2 m ²
Alfresco	14.7 m ²
Void	5.5 m ²

Total 184.4 m²

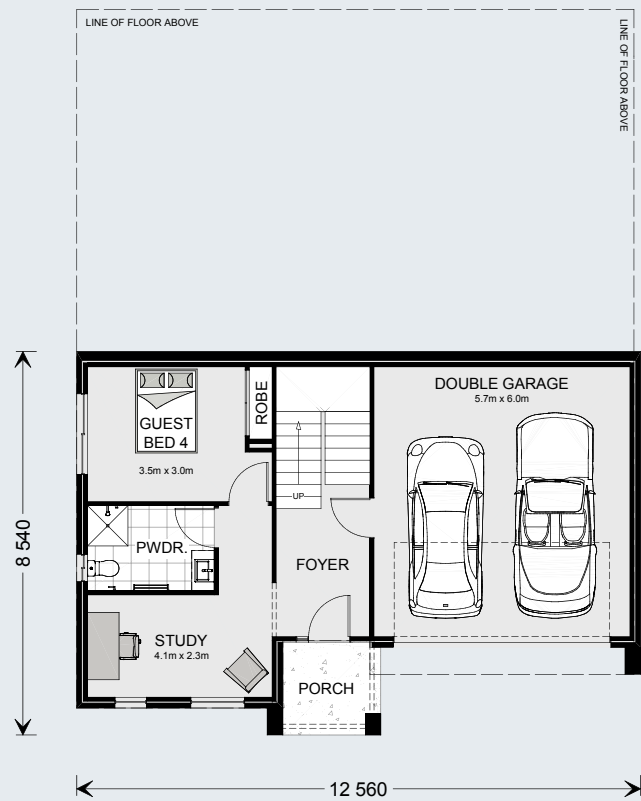
Grand Total 276.8 m²



The North Point

Orientate your floorplan with the main living areas positioned due north to ensure your home is optimised for the sun during the day, as well as throughout the seasons.

Images in this brochure may depict landscaping, fences and upgraded fixtures, features or finishes which are not included. Construction and site works shown are indicative only and may vary subject to individual site conditions. For availability and pricing of these items please discuss with your new home consultant.



Windsor 247

4 3 2

Lower Floor

Living	49.8 m ²
Garage	39.1 m ²
Porch	4.5 m ²
Total	93.4 m²

Upper Floor

Living	135.9 m ²
Alfresco	12.5 m ²
Void	5.5 m ²
Total	153.9 m²
Grand Total	247.3 m²







G.J. Gardner. HOMES

gjjardner.com.au