



Hampton 2129

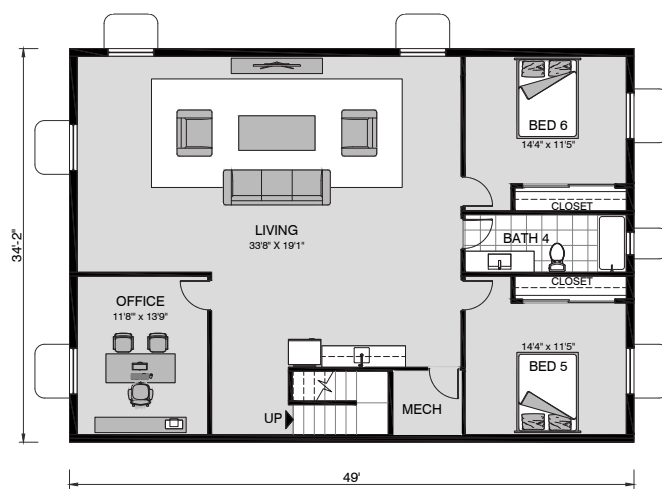
 4
  3
  3

The Hampton design, has been brilliantly created to suit standard sized lots while maintaining privacy and relaxation.

The open plan living space begins with a centralized kitchen and walk-in pantry and continues with a seamless transition to the dining area and family room. The main floor primary bedroom and ensuite have private hallway access and views of the backyard. The central hallway provides access to the additional three guest bedrooms, two full bathrooms and laundry room. This home also has an optional basement that can be customized to suit your needs.



Main Floor



Basement Optional

Hampton 2129

4 Beds | 3 Baths | 3 Cars

Main Floor	2129 ft ²	Garage	668 ft ²
Total Living	2129 ft²	Porch	23 ft ²
		Total Unconditioned	691 ft²

Optional Basement 1674 ft²

**Total Living +
Basement 3803 ft²**



***Disclaimer:** Subject to site limitations. Images and photographs may depict fixtures, finishes and features either not supplied by G.J. Gardner Homes or not included in the price stated. For detailed home pricing please talk to a New Homes Consultant.