

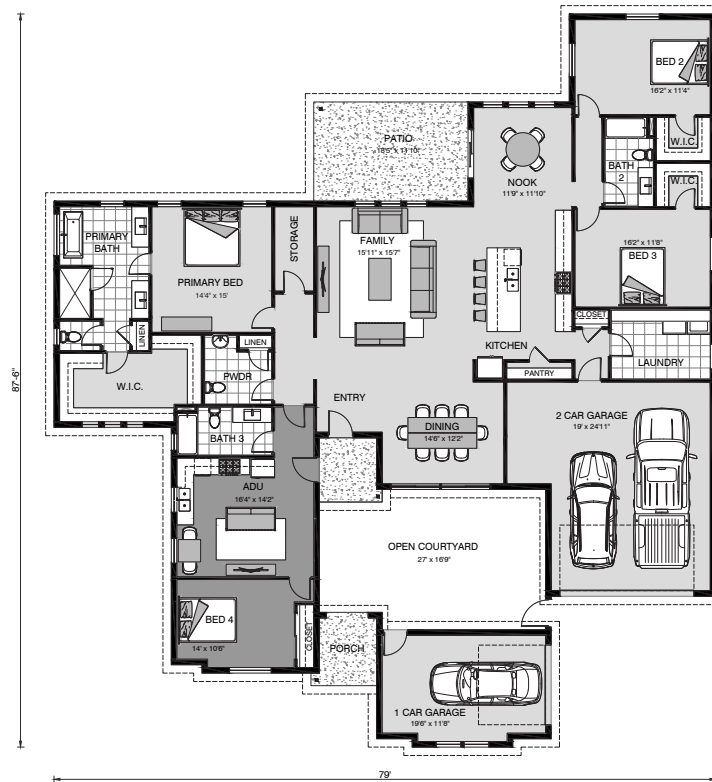


# Bristol 3208

 4
  3.5
  3

The Bristol design is family home that is big on substance and style, tailored around a central courtyard that includes an attached, self-contained 557 square foot ADU.

Perfect for entertaining, the Bristol boasts a large open concept living area complete with a kitchen, breakfast nook, family room and dining area. This design seamlessly connects indoor and outdoor living with its central courtyard and covered back patio. Off the breakfast nook are two guest bedrooms, both with walk-in closets and a full bathroom in between. On the left wing discover the powder bath, attached ADU and primary retreat complete with 5-piece ensuite bath and an oversized walk-in closet. The 557 square foot ADU includes its own full kitchen, living area, bedroom and bathroom and has both internal and external access, making it an ideal space for family, tenants or guests.



Main Floor

## Bristol 3208

4 | 3.5 | 3

Main Floor	2651 ft <sup>2</sup>
Main Floor - ADU	557 ft <sup>2</sup>
<b>Total Living</b>	<b>3208 ft<sup>2</sup></b>

Garage	892 ft <sup>2</sup>
Porch	114 ft <sup>2</sup>
Patio	219 ft <sup>2</sup>
<b>Total Unconditioned</b>	<b>1225 ft<sup>2</sup></b>



**\*Disclaimer:** Subject to site limitations. Images and photographs may depict fixtures, finishes and features either not supplied by G.J. Gardner Homes or not included in the price stated. For detailed home pricing please talk to a New Homes Consultant.