



Armada

G.J. Gardner. HOMES



CLASSIC



HAMPTONS



RESORT



URBAN



Armadale

Compact and stylish, the Armadale, exclusive to G.J. Gardner Homes is designed to suit narrow sites and provides good use of space with functional practical living.

The open plan living space with U-shape kitchen, dining and family room leads outdoors to a covered alfresco area to the rear. A generous master suite with an ensuite and walk-in robe is positioned at the rear of the home and provides a space to retreat and unwind. Two additional bedrooms, a family bathroom, good size laundry and a single garage make this a delightful family home.

Images in this brochure may depict landscaping, fences and upgraded fixtures, features or finishes which are not included. For availability and pricing of these items please discuss with your new home consultant.

Armadale

149

 3
  2
  1

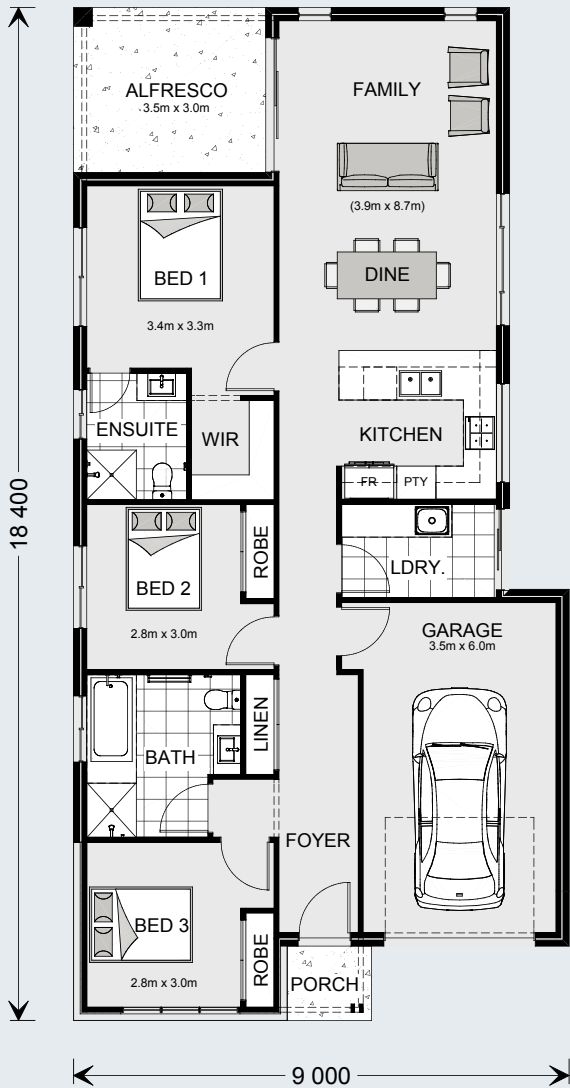
Floor Area	
Living	112.6 m ²
Garage	24.1 m ²
Alfresco	10.5 m ²
Porch	2.1 m ²
Total	149.3 m²



The North Point

Orientate your floorplan with the main living areas positioned due north to ensure your home is optimised for the sun during the day, as well as throughout the seasons.

By getting the right floor plan for your block, taking into consideration the north point, you will get the best out of the land that you've chosen.









G.J. Gardner. HOMES

gjjardner.com.au