



Sacramento

G.J. Gardner. HOMES



RESORT



EXECUTIVE



URBAN



HAMPTONS



BEACH



CLASSIC



Sacramento

The Sacramento is an elegant family home with defined, open plan living areas and good separation of private spaces throughout, creating an enjoyable home for all.

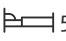
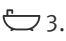

Designed for multigenerational living the home has dual master suites complete with ensuite and walk in robes located on each floor level and two lounge rooms to complement family dynamics.

The open plan living area towards the rear of the home has a large kitchen, butler's pantry, dining, family room and outdoor alfresco, making the Sacramento an entertainer's delight.

Images in this brochure may depict landscaping, fences and upgraded fixtures, features or finishes which are not included. For availability and pricing of these items please discuss with your new home consultant.

Sacramento

380

 5
  3.5
  2

Ground Floor

Living	153.2 m ²
Garage	38.3 m ²
Alfresco	21.4 m ²
Porch	6.2 m ²

Total 219.1 m²

Upper Floor

Living	150.0 m ²
Void	6.3 m ²
Balcony	4.6 m ²

Total 160.9 m²

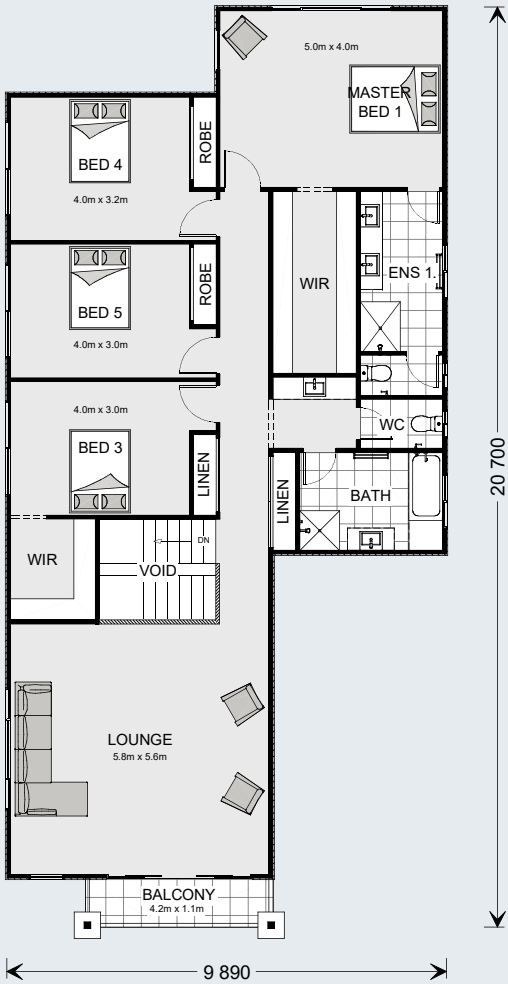
Grand Total 380.0 m²



The North Point

Orientate your floorplan with the main living areas positioned due north to ensure your home is optimised for the sun during the day, as well as throughout the seasons.

By getting the right floor plan for your block, taking into consideration the north point, you will get the best out of the land that you've chosen.



Sacramento

320

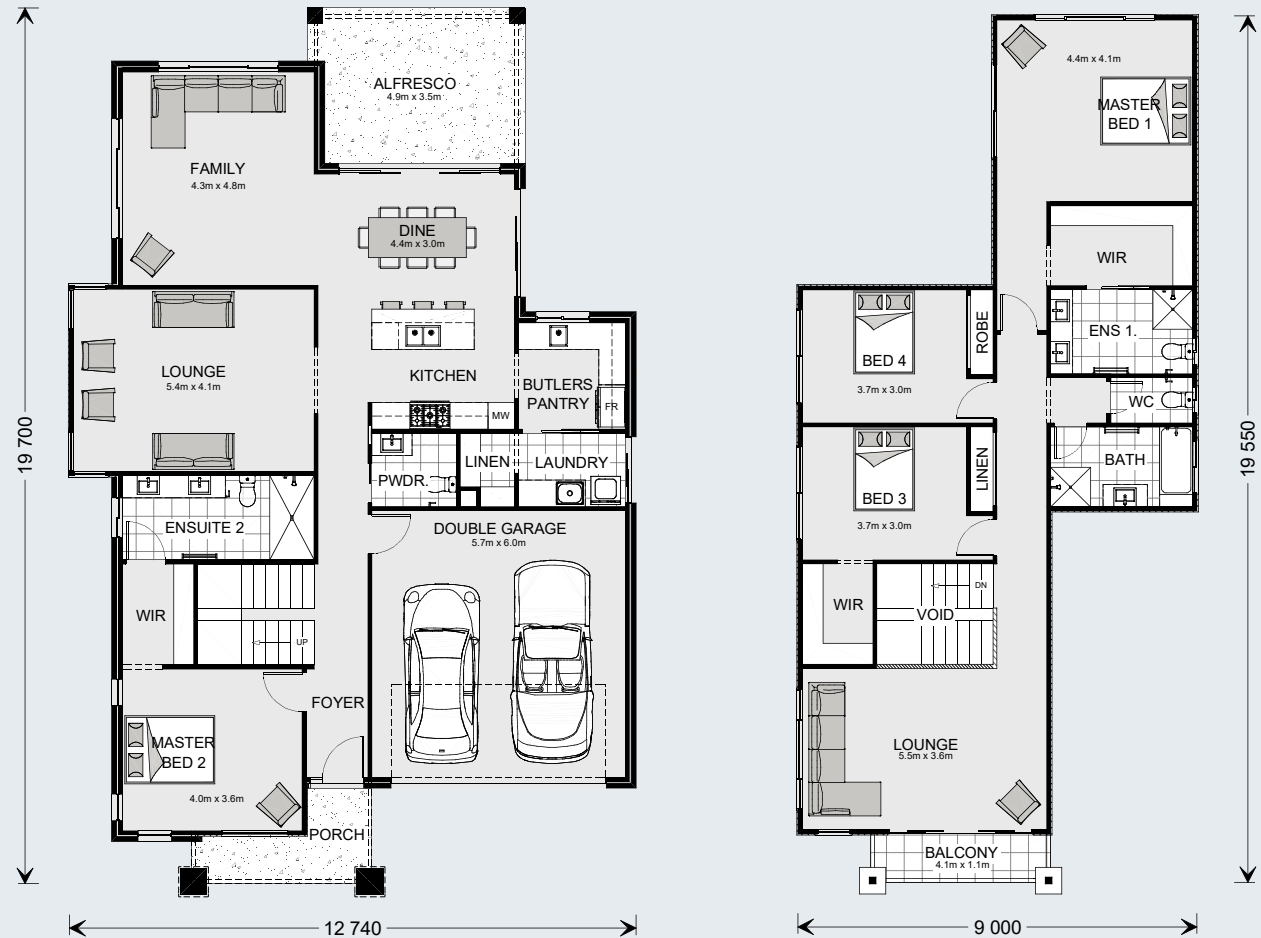
4 3.5 2

Ground Floor

Living	140.2 m ²
Garage	37.1 m ²
Alfresco	16.3 m ²
Porch	6.0 m ²
Total	199.6 m²

Upper Floor

Living	108.9 m ²
Void	6.3 m ²
Balcony	4.5 m ²
Total	119.7 m²
Grand Total	319.3 m²







G.J. Gardner. HOMES

gjgardner.com.au