



**Bridgewater**

**G.J. Gardner.** HOMES







RESORT



EXECUTIVE



URBAN



HAMPTONS



BEACH



CLASSIC



# Bridgewater

The Bridgewater design range, exclusive to G.J. Gardner Homes, features a superb blend of modern architectural interiors, quality fittings and inclusions and stylish outdoor entertaining.

This is a home for the discerning buyer who wants clever design in tune with the needs of contemporary living. With its effortless connections throughout the home, here you can embrace both family time and easily find private space for relaxation.

An open plan family zone creates the perfect space for entertaining friends and family, with a central kitchen and walk-in-pantry overlooking the dining, family, and alfresco areas. Plus, a separate lounge allows for the opportunity to escape and relax.

The master bedroom with well-appointed ensuite and walk in robe is privately positioned in the front of the home while at the rear is the kids' zone with the additional bedrooms, central activity room and family bathroom.

The Bridgewater design is an innovative and inspiring home design you will love coming home to.

Images in this brochure may depict landscaping, fences and upgraded fixtures, features or finishes which are not included. For availability and pricing of these items please discuss with your new home consultant.

# Bridgewater 225

4 | 2.5 | 2

## Floor Area

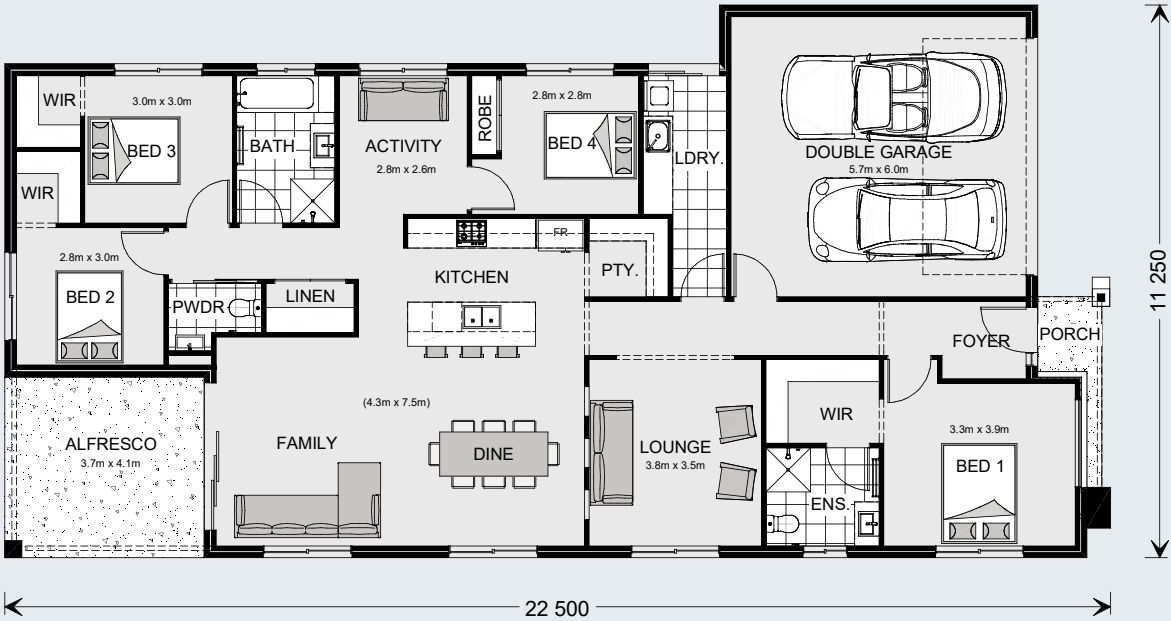
Living	170.9 m <sup>2</sup>
Garage	37.4 m <sup>2</sup>
Alfresco	14.9 m <sup>2</sup>
Porch	2.7 m <sup>2</sup>
<b>Total</b>	<b>225.9 m<sup>2</sup></b>



## The North Point

Orientate your floorplan with the main living areas positioned due north to ensure your home is optimised for the sun during the day, as well as throughout the seasons.

By getting the right floor plan for your block, taking into consideration the north point, you will get the best out of the land that you've chosen.

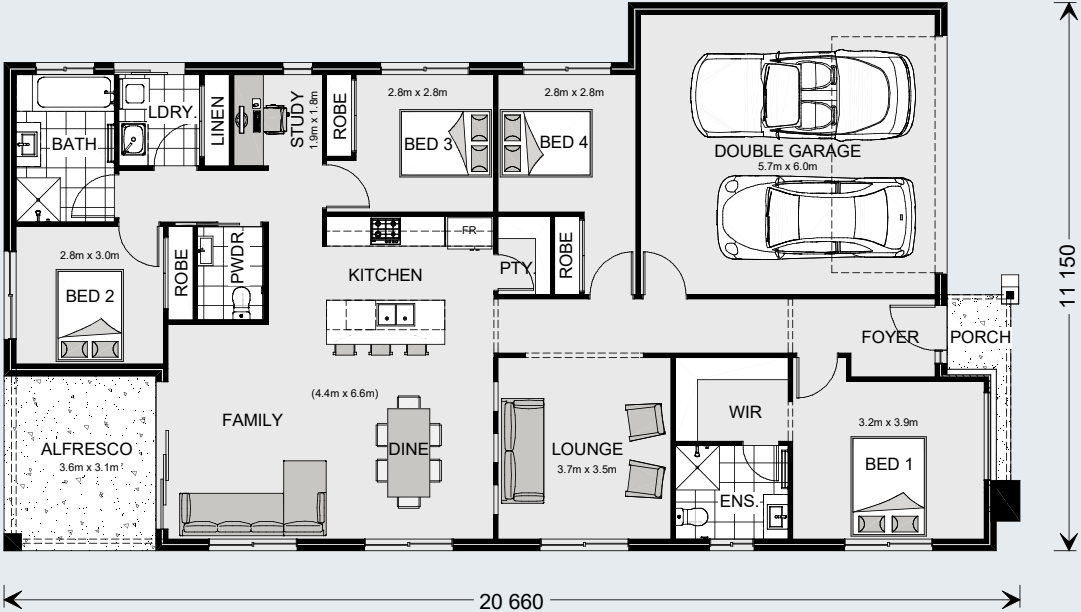


# Bridgewater 205

4 2.5 2

## Floor Area

Living	154.2 m <sup>2</sup>
Garage	37.4 m <sup>2</sup>
Alfresco	11.0 m <sup>2</sup>
Porch	2.7 m <sup>2</sup>
Total	205.3 m <sup>2</sup>

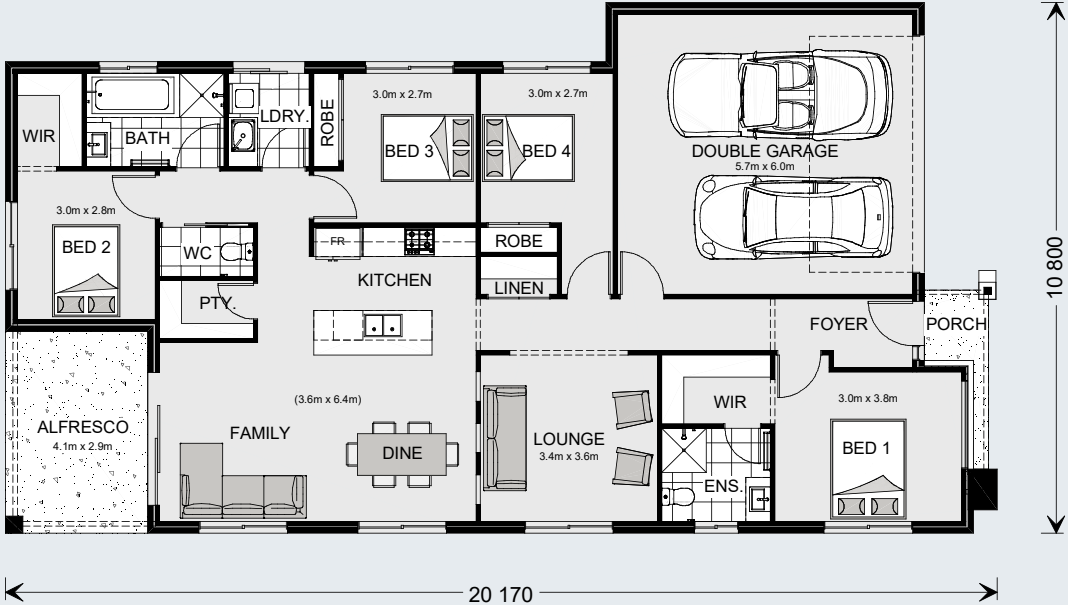


# Bridgewater 194

4 2 2

## Floor Area

Living	141.8 m <sup>2</sup>
Garage	37.4 m <sup>2</sup>
Alfresco	11.9 m <sup>2</sup>
Porch	2.5 m <sup>2</sup>
<b>Total</b>	<b>193.6 m<sup>2</sup></b>

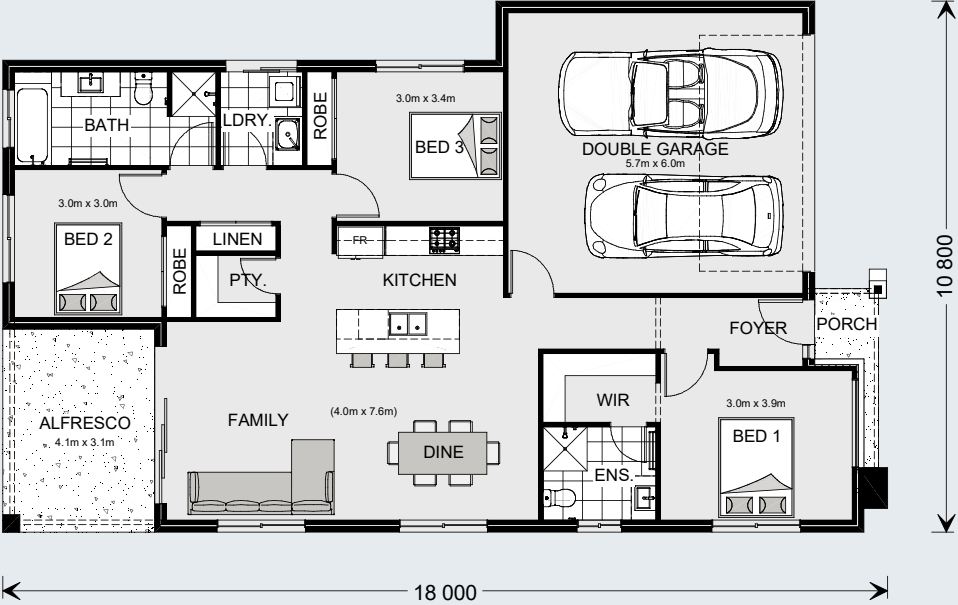


# Bridgewater 173

3 2 2

## Floor Area

Living	120.1 m <sup>2</sup>
Garage	37.4 m <sup>2</sup>
Alfresco	12.8 m <sup>2</sup>
Porch	2.5 m <sup>2</sup>
<b>Total</b>	<b>172.8 m<sup>2</sup></b>



G.J. Gardner. HOMES

[gjgardner.com.au](http://gjgardner.com.au)