



Calderwood

G.J. Gardner. HOMES



CLASSIC



EXECUTIVE



RESORT



URBAN



Calderwood

An ideal home for first home buyers and downsizers the Calderwood has been carefully designed to offer maximum comfort and privacy for the whole family.

Cleverly designed to suit narrow lots, this home provides four bedrooms that are well separated throughout the home, including the private master suite with its own ensuite and walk-in robe.

Bedrooms two and three share a central main bathroom with separate WC, while the fourth bedroom is perfectly positioned to host guests or be converted into a spacious media or lounge room.

The open-plan family living area at the rear is ideal for entertaining, with a stylish kitchen, island bench, dining area and easy access to a covered outdoor living space.

Images in this brochure may depict landscaping, fences and upgraded fixtures, features or finishes which are not included. For availability and pricing of these items please discuss with your new home consultant.

Calderwood

157

4 2 1

Floor Area

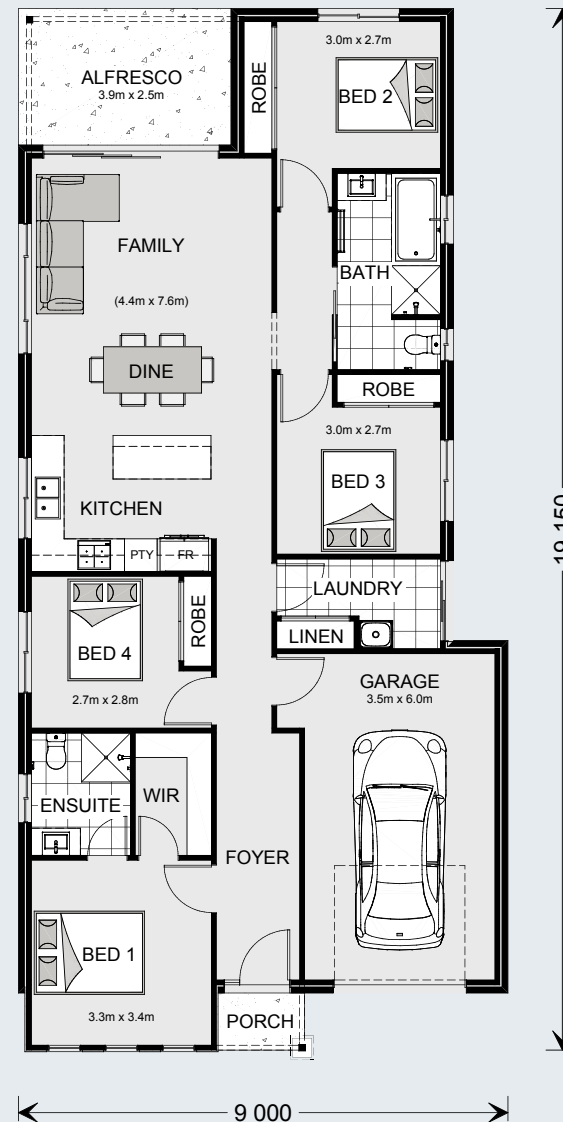
| | |
|--------------|----------------------------|
| Living | 120.9 m ² |
| Garage | 24.3 m ² |
| Alfresco | 9.8 m ² |
| Porch | 1.7 m ² |
| Total | 156.7 m² |



The North Point

Orientate your floorplan with the main living areas positioned due north to ensure your home is optimised for the sun during the day, as well as throughout the seasons.

By getting the right floor plan for your block, taking into consideration the north point, you will get the best out of the land that you've chosen.









G.J. Gardner. HOMES

gjjardner.com.au