



Coolum

G.J. Gardner. HOMES



RESORT



BEACH



URBAN



HAMPTONS



PALM SPRINGS



CLASSIC



Coolum

The Coolum design range is easily recognisable in the exclusive G.J. Gardner Homes design range, with its practical yet admirable layout that boasts space for each family member.

Main features of the luxury layout include, a separate media room, an open plan family room, an activity room and master suite, all sporting an abundance of space. The spacious and breathable home layout contrasts to the private and secluded bedrooms perfect for personal retreats and desired alone time.

The elegance of practicality continues with the covered alfresco seamlessly connected to the open plan living space including an entertainer's kitchen with a butler's pantry. This space is the core of the home.

Luxury living is inviting you into the master suite at the front of the home with features such as a walk-in robe, and enviable ensuite. A dedicated kid's space is optimally located at the back of the house with the additional bedrooms, a family friendly bathroom and the activity room that acts as the central hub of this space.

Enjoy a home that feels and looks luxurious and elegant, as well as being effortlessly practical with the perfect contrast of space and privacy.

Images in this brochure may depict landscaping, fences and upgraded fixtures, features or finishes which are not included. For availability and pricing of these items please discuss with your new home consultant.

Coolum 265

4 2.5 2

Floor Area

Living	207.9 m ²
Garage	37.6 m ²
Alfresco	16.7 m ²
Porch	3.5 m ²
Total	265.7 m²



The North Point

Orientate your floorplan with the main living areas positioned due north to ensure your home is optimised for the sun during the day, as well as throughout the seasons.

By getting the right floor plan for your block, taking into consideration the north point, you will get the best out of the land that you've chosen.



Coolum 250

4 2.5 2

Floor Area

Living	194.6 m ²
Garage	37.3 m ²
Alfresco	14.6 m ²
Porch	3.3 m ²
Total	249.8 m²

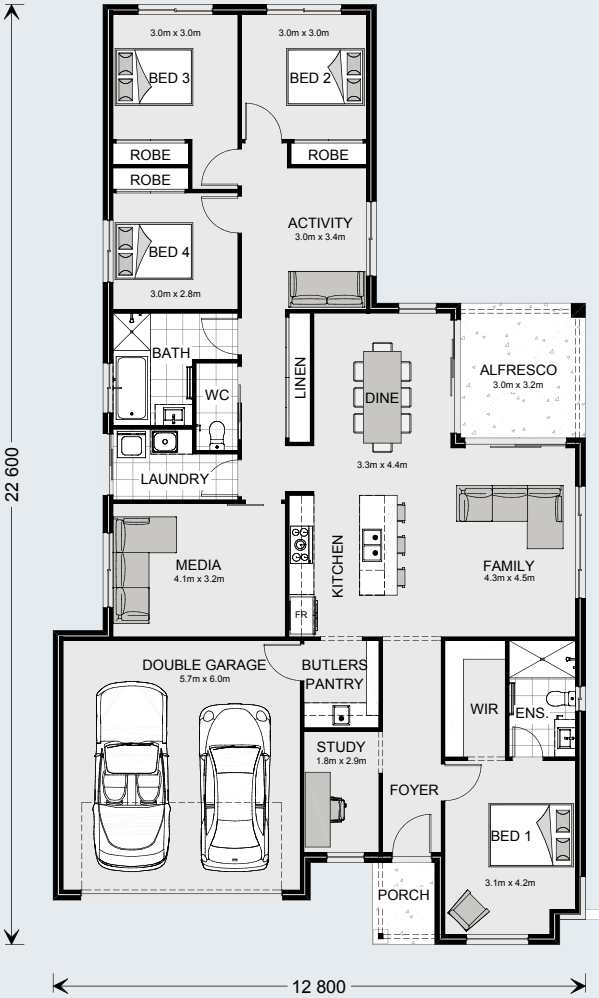


Coolum 225

4 2 2

Floor Area

Living	174.9 m ²
Garage	37.6 m ²
Alfresco	9.7 m ²
Porch	3.0 m ²
Total	225.2 m ²

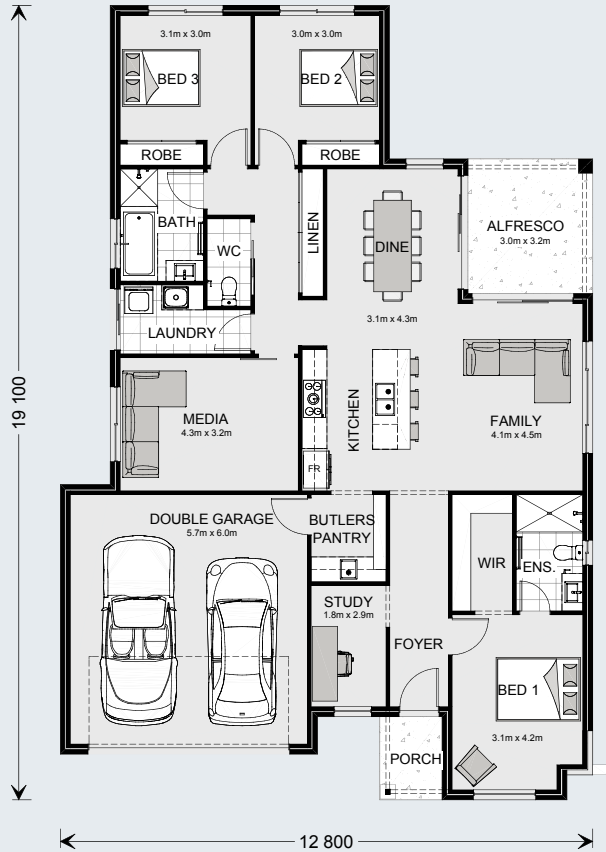


Coolum 202

3 2 2

Floor Area

Living	152.1 m ²
Garage	37.6 m ²
Alfresco	9.7 m ²
Porch	3.0 m ²
Total	202.4 m²



G.J. Gardner. HOMES

gjjardner.com.au