



**Bridgewater**

**G.J. Gardner.** HOMES







RESORT



ALPINE



URBAN



HAMPTONS



BEACH



CLASSIC



# Bridgewater

The Bridgewater design range features a superb blend of modern architectural interiors, quality fittings and inclusions and stylish outdoor entertaining.

This is a home for the discerning buyer who wants clever design in tune with the needs of contemporary living. With its effortless connections throughout the home, here you can embrace both family time and easily find private space for relaxation.


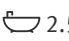

An open plan family zone creates the perfect space for entertaining friends and family, with a central kitchen and walk-in-pantry overlooking the dining, family, and alfresco areas. Plus, a separate lounge allows for the opportunity to escape and relax.

The master bedroom with well-appointed ensuite and walk in robe is privately positioned in the front of the home while at the rear is the kids' zone with the additional bedrooms, central activity room and family bathroom.

Images in this brochure may depict landscaping, fences and upgraded fixtures, features or finishes which are not included. For availability and pricing of these items please discuss with your new home consultant.

# Bridgewater

## 225

 4
  2.5
  2

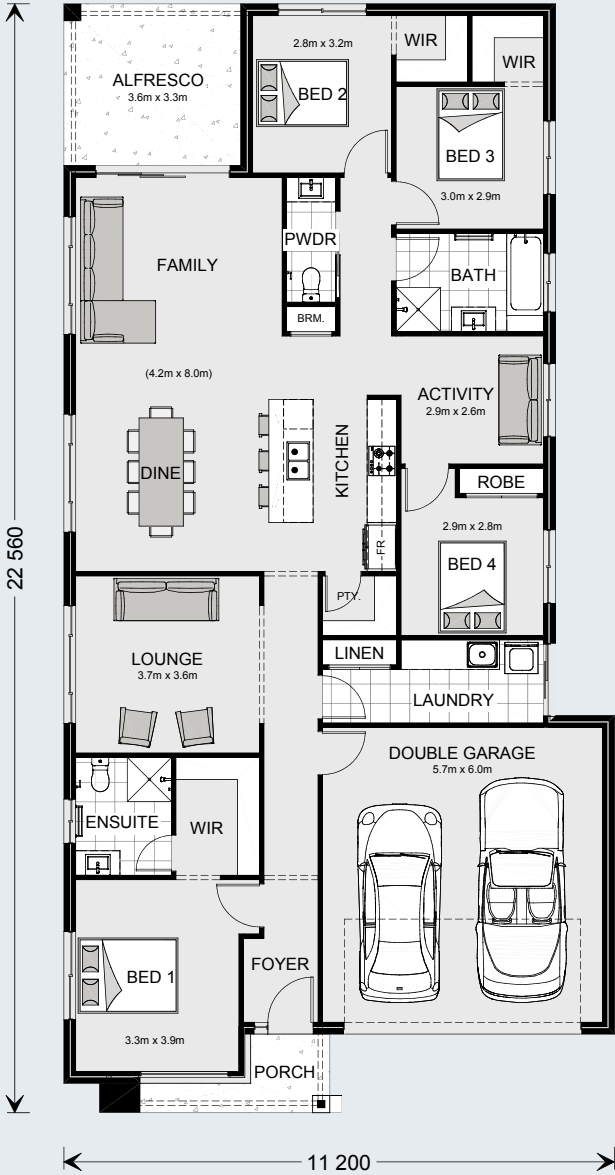
Floor Area	
Living	172.5 m <sup>2</sup>
Garage	37.4 m <sup>2</sup>
Alfresco	11.8 m <sup>2</sup>
Porch	3.9 m <sup>2</sup>
<b>Total</b>	<b>225.6 m<sup>2</sup></b>



### The North Point

Orientate your floorplan with the main living areas positioned due north to ensure your home is optimised for the sun during the day, as well as throughout the seasons.

By getting the right floor plan for your block, taking into consideration the north point, you will get the best out of the land that you've chosen.

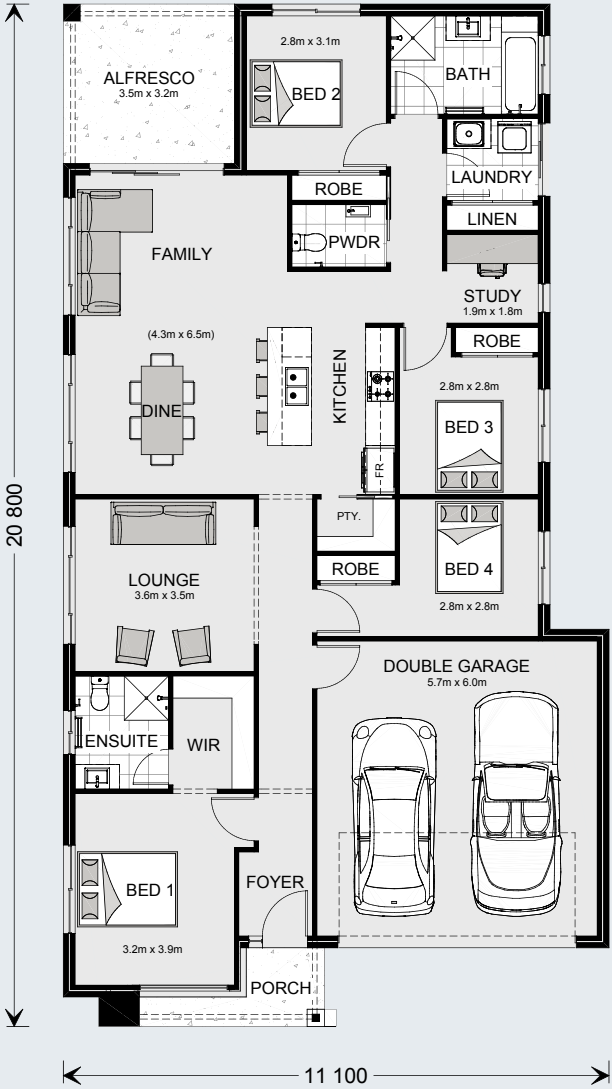


# Bridgewater

## 205

4 2.5 2

Floor Area	
Living	153.1 m <sup>2</sup>
Garage	37.4 m <sup>2</sup>
Alfresco	11.3 m <sup>2</sup>
Porch	3.9 m <sup>2</sup>
Total	205.7 m <sup>2</sup>

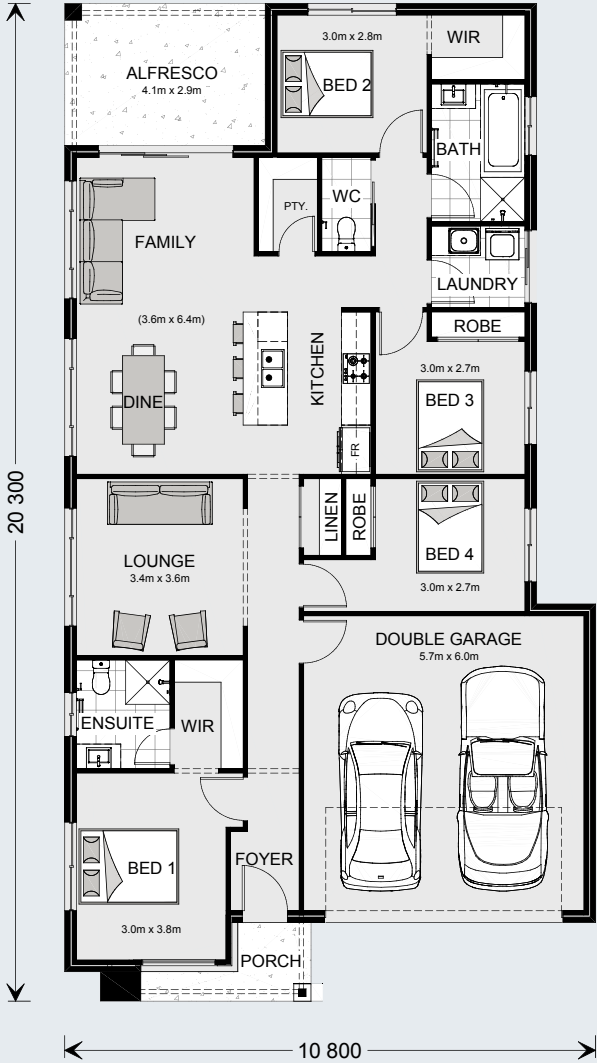


# Bridgewater

195

4 2 2

Floor Area	
Living	142.1 m <sup>2</sup>
Garage	37.4 m <sup>2</sup>
Alfresco	11.8 m <sup>2</sup>
Porch	3.6 m <sup>2</sup>
Total	194.9 m <sup>2</sup>

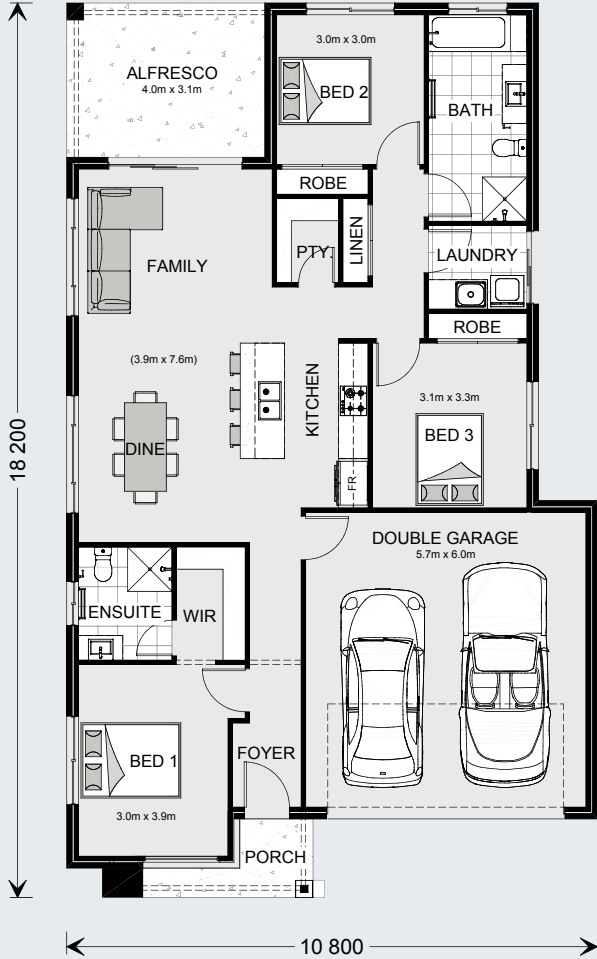


# Bridgewater

175

3 2 2

Floor Area	
Living	121.0 m <sup>2</sup>
Garage	37.4 m <sup>2</sup>
Alfresco	12.7 m <sup>2</sup>
Porch	3.6 m <sup>2</sup>
Total	174.7 m <sup>2</sup>



G.J. Gardner. HOMES

[gjjardner.com.au](http://gjjardner.com.au)