



Bridgewater

**G.J. Gardner.** **HOMES**



# Bridgewater Design

Visit our 3D tours to explore our beautiful  
home range at [gigardner.com.au](http://gigardner.com.au)





## Our Difference

What continues to let G.J. Gardner Homes stand out from other builders is the G.J. Way: a level of quality that extends to all we do.

Our homes have been mindfully crafted by our teams of architects and designers. Drawing from today's leading home trends, Australian lifestyles and a goal to streamline living, we're world-renowned for our designs. Through our wide and well-connected franchise system, our designs are constantly inspired by real communities and their ways of living across the country. Building hundreds of family homes each year gives us unrivalled knowledge of what makes a house a home.

Images in this brochure may depict landscaping, fences and upgraded fixtures, features or finishes which are not included. For availability and pricing of these items please discuss with your new home consultant.







RESORT



ALPINE



CLASSIC



URBAN



HAMPTONS



BEACH



# Bridgewater

The Bridgewater design range features a superb blend of modern architectural interiors, quality fittings and inclusions and stylish outdoor entertaining.

This is a home for the discerning buyer who wants clever design in tune with the needs of contemporary living. With its effortless connections throughout the home, here you can embrace both family time and easily find private space for relaxation.

An open plan family zone creates the perfect space for entertaining friends and family, with a central kitchen and walk-in-pantry overlooking the dining, family, and alfresco areas. Plus, a separate lounge allows for the opportunity to escape and relax.

The master bedroom with well-appointed ensuite and walk in robe is privately positioned in the front of the home while at the rear is the kids' zone with the additional bedrooms, central activity room and family bathroom.

Images in this brochure may depict landscaping, fences and upgraded fixtures, features or finishes which are not included. For availability and pricing of these items please discuss with your new home consultant.



# Bridgewater 225

4 2.5 2

## Floor Area

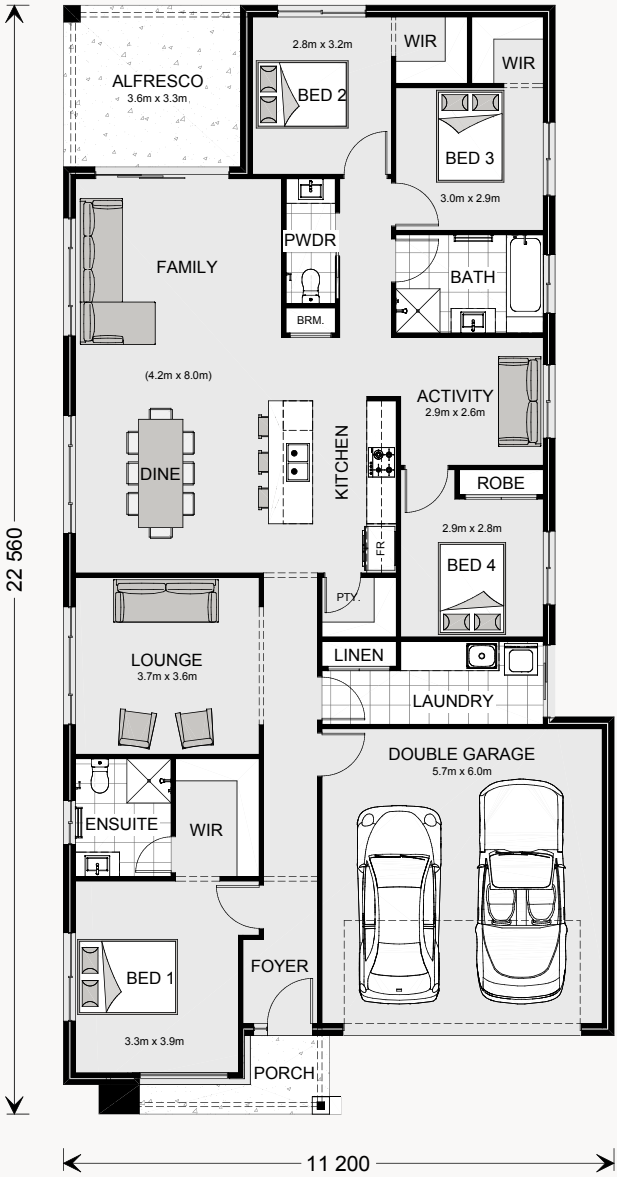
Living	172.5 m <sup>2</sup>
Garage	37.4 m <sup>2</sup>
Alfresco	11.8 m <sup>2</sup>
Porch	3.9 m <sup>2</sup>
<b>Total</b>	<b>225.6 m<sup>2</sup></b>



## The North Point

Orientate your floorplan with the main living areas positioned due north to ensure your home is optimised for the sun during the day, as well as throughout the seasons.

By getting the right floor plan for your block, taking into consideration the north point, you will get the best out of the land that you've chosen.



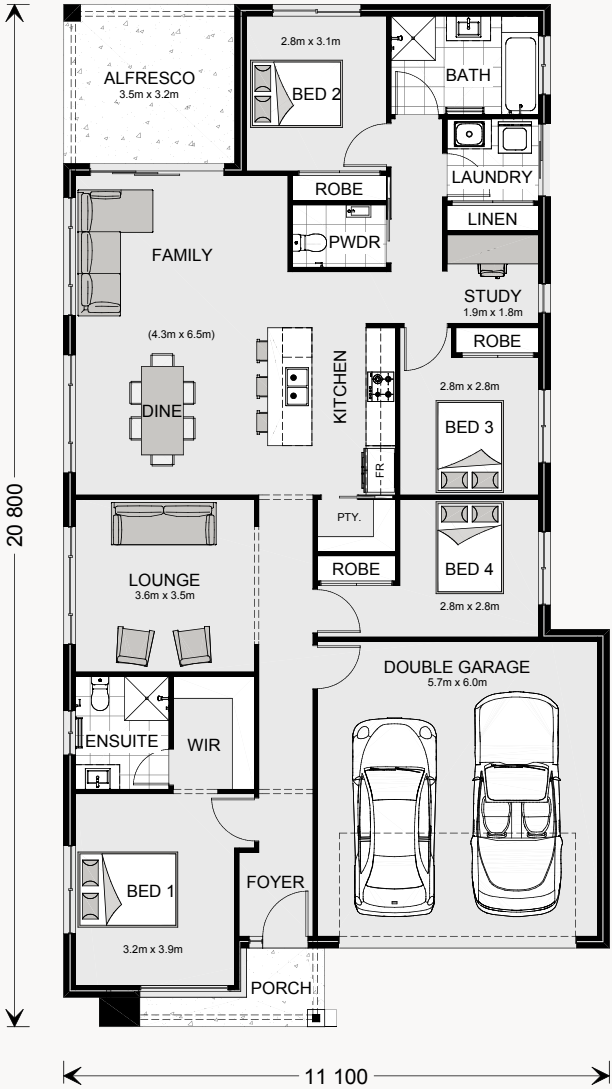


# Bridgewater 205

4 2.5 2

## Floor Area

Living	153.1 m <sup>2</sup>
Garage	37.4 m <sup>2</sup>
Alfresco	11.3 m <sup>2</sup>
Porch	3.9 m <sup>2</sup>
<b>Total</b>	<b>205.7 m<sup>2</sup></b>



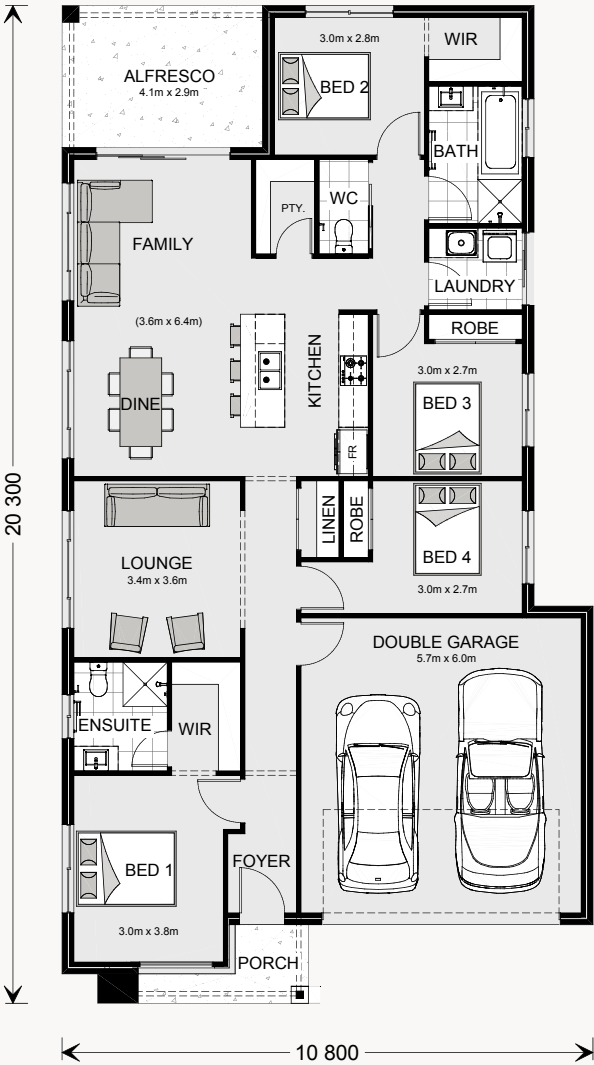


# Bridgewater 195

4 Beds 2 Baths 2 Cars

## Floor Area

Living	142.1 m <sup>2</sup>
Garage	37.4 m <sup>2</sup>
Alfresco	11.8 m <sup>2</sup>
Porch	3.6 m <sup>2</sup>
<b>Total</b>	<b>194.9 m<sup>2</sup></b>

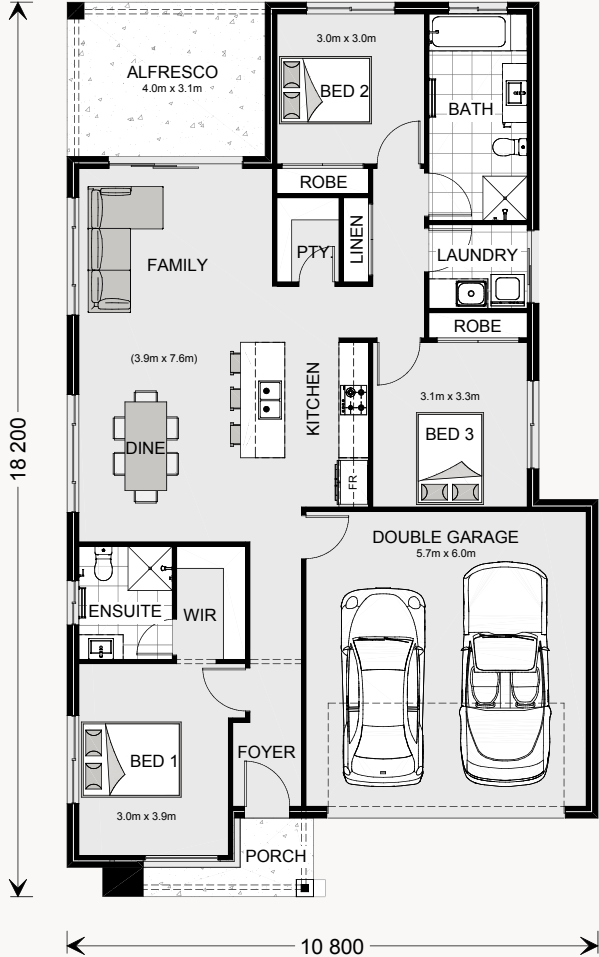


# Bridgewater 175

3 2 2

## Floor Area

Living	121.0 m <sup>2</sup>
Garage	37.4 m <sup>2</sup>
Alfresco	12.7 m <sup>2</sup>
Porch	3.6 m <sup>2</sup>
<b>Total</b>	<b>174.7 m<sup>2</sup></b>













**G.J. Gardner.** HOMES

[gjjardner.com.au](http://gjjardner.com.au)