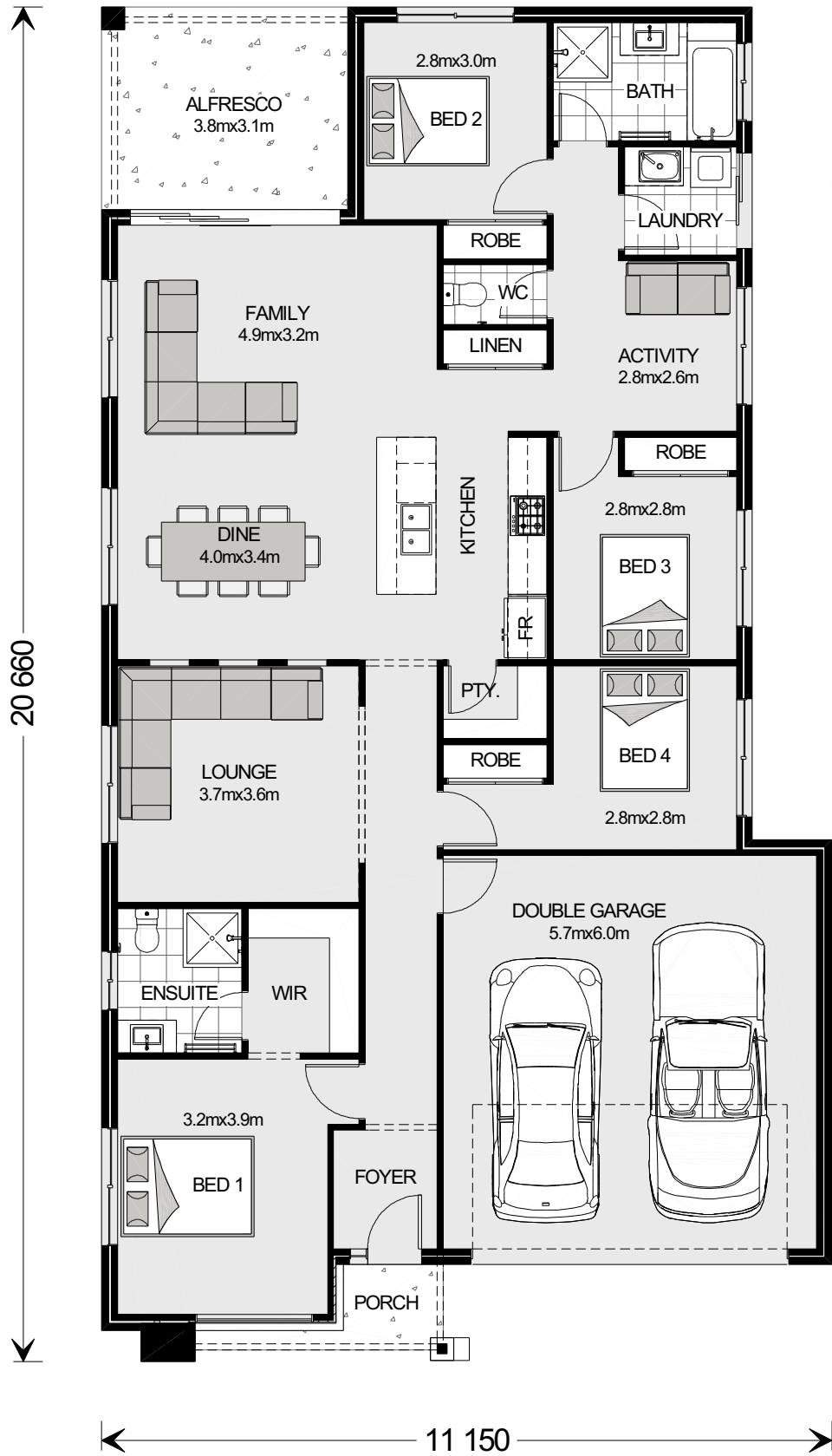


Element Series

NSW ONLY



ARTISTS IMPRESSION - for illustrative purposes only  
(Bridgewater 225 Resort Facade Shown)

NSW ONLY

These plans are for use in NSW only and do not comply with NCC 2022 Livable Housing Design requirements.  
Please refer to your state or territory regulations for further details.

PLANS ARE SUBJECT TO LOCAL COUNCIL & DEVELOPERS GUIDELINES (COVENANTS).

BRIDGEWATER 205

Resort Streetscape

Copyright© Archiman Pty Ltd exclusive To G.J. Gardner Homes  
Concept plans only, final working drawings may vary

CONCEPT

DATE:  
30/05/2023

FLOOR AREAS

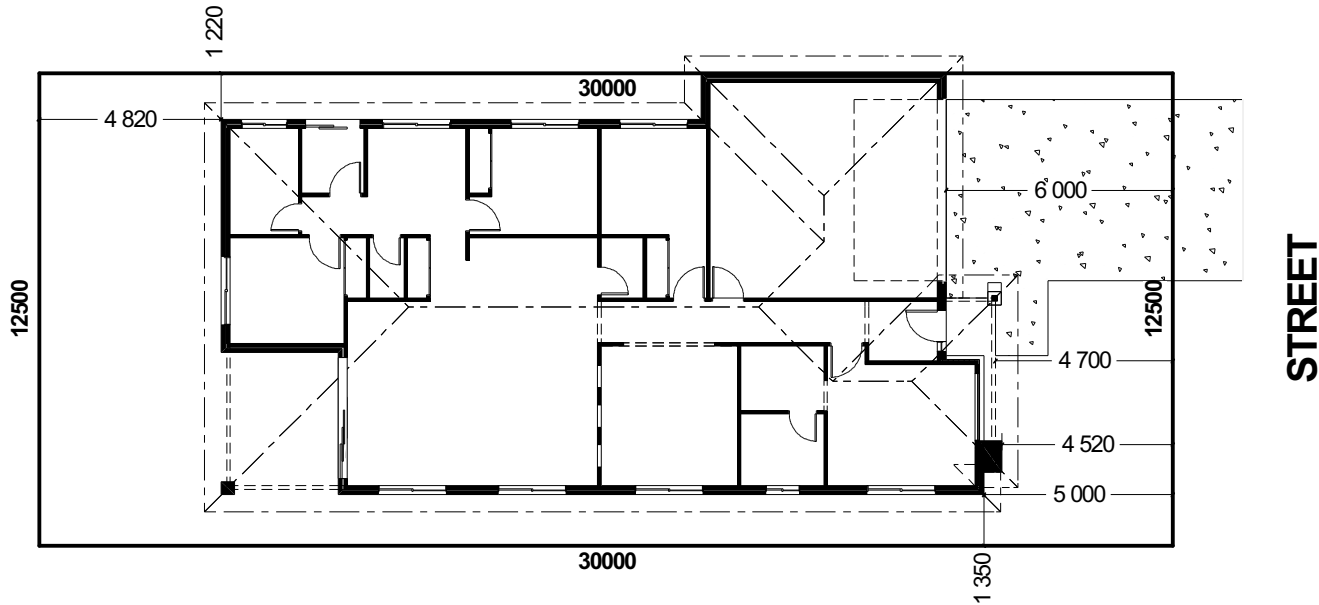
LIVING	153.4 m²
GARAGE	37.4 m²
ALFRESCO	11.6 m²
PORCH	2.7 m²
TOTAL	205.1 m²

12.5m+ Lot Width

PRESENTATION PLAN

G.J. Gardner.

HOMES



INDICATIVE SITE PLAN ONLY. ACTUAL LOT WIDTH, SIZE AND SETBACKS MAY VARY TO SUIT LOCAL REQUIREMENT'S AND MAY REQUIRE A LARGER SITE OR PLAN MODIFICATIONS TO SUIT A PARTICULAR SITE.

NSW ONLY

These plans are for use in NSW only and do not comply with NCC 2022 Livable Housing Design requirements. Please refer to your state or territory regulations for further details.

PLANS ARE SUBJECT TO LOCAL COUNCIL & DEVELOPERS GUIDELINES (COVENANTS).

BRIDGEWATER 205

Resort Streetscape

Copyright© Archiman Pty Ltd exclusive To G.J. Gardner Homes  
Concept plans only, final working drawings may vary

CONCEPT

FLOOR AREAS

12.5m+ Lot Width

SITE PLAN Scale 1:200

DATE:

30/05/2023

LIVING	153.4 m <sup>2</sup>
GARAGE	37.4 m <sup>2</sup>
ALFRESCO	11.6 m <sup>2</sup>
PORCH	2.7 m <sup>2</sup>
TOTAL	205.1 m <sup>2</sup>

G.J. Gardner.  
HOMES

Element Series

NSW ONLY



NSW ONLY

These plans are for use in NSW only and do not comply with NCC 2022 Livable Housing Design requirements. Please refer to your state or territory regulations for further details.

PLANS ARE SUBJECT TO LOCAL COUNCIL & DEVELOPERS GUIDELINES (COVENANTS).

BRIDGEWATER 205

Resort Streetscape

Copyright© Archiman Pty Ltd exclusive To G.J. Gardner Homes  
Concept plans only, final working drawings may vary

CONCEPT

DATE:  
30/05/2023

FLOOR AREAS

LIVING	153.4 m²
GARAGE	37.4 m²
ALFRESCO	11.6 m²
PORCH	2.7 m²
TOTAL	205.1 m²

12.5m+ Lot Width

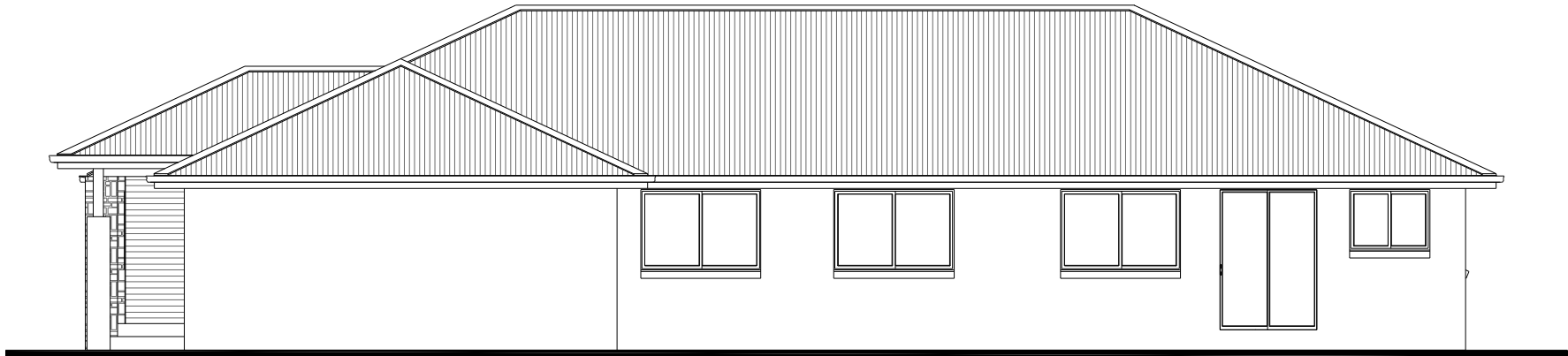
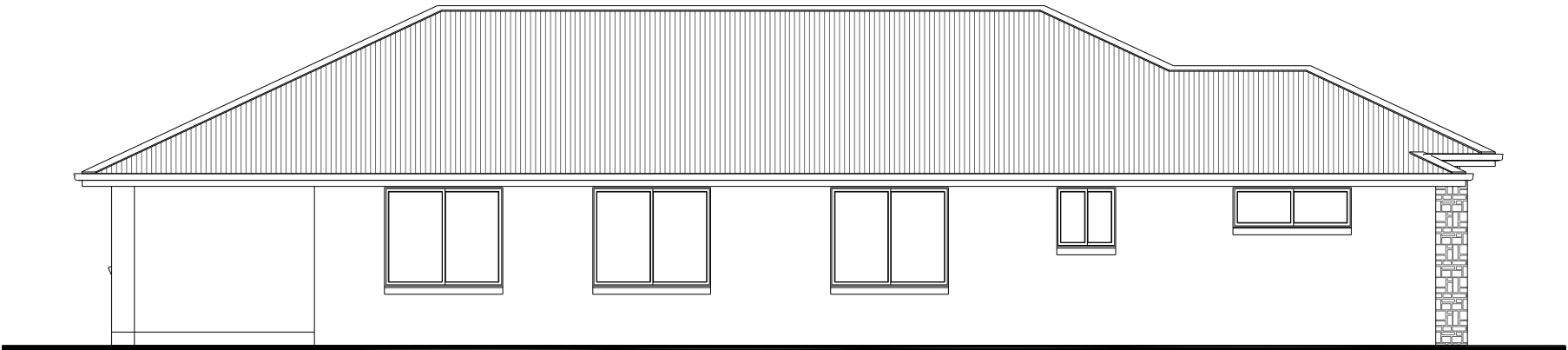
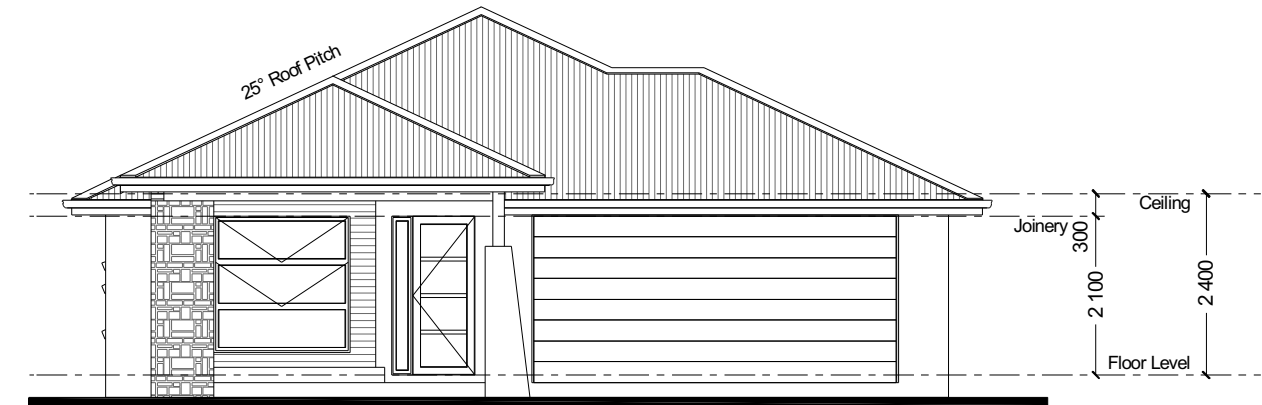
FLOOR PLAN Scale 1:100

G.J. Gardner.

HOMES

Element Series

NSW ONLY



NSW ONLY

These plans are for use in NSW only and do not comply with NCC 2022 Livable Housing Design requirements. Please refer to your state or territory regulations for further details.

PLANS ARE SUBJECT TO LOCAL COUNCIL & DEVELOPERS GUIDELINES (COVENANTS).

BRIDGEWATER 205

Resort Streetscape

Copyright© Archiman Pty Ltd exclusive To G.J. Gardner Homes  
Concept plans only, final working drawings may vary

CONCEPT

DATE:

30/05/2023

FLOOR AREAS

LIVING	153.4 m²
GARAGE	37.4 m²
ALFRESCO	11.6 m²
PORCH	2.7 m²
TOTAL	205.1 m²

12.5m+ Lot Width

ELEVATIONS Scale 1:100

G.J. Gardner.

HOMES



ELECTRICAL LEGEND

NOTE:  
ALL ELECTRICAL WORK MUST  
BE COMPLETED TO THE  
RELEVANT AUSTRALIAN  
STANDARDS AND THE  
NATIONAL CONSTRUCTION  
CODE OF AUSTRALIA.

LIGHTING \*EEF (denotes energy efficient light fittings)

Symbol	Description	Spec.	Extra
○	Ceiling Light *EEF	-	-
●	Down Light *EEF	-	-
⌈1800⌋	Wall Light *EEF approx height	-	-
⌈x x⌋	Pendant / Track Light *EEF	-	-
⌈○○○⌋	IXL Tastic (or similar)	-	-
⌈=====⌋	Batten Fluro Light *EEF	-	-
⌈⦶⌋	Round Fluro Light *EEF	-	-
⌈⬆⬆⌋	Flood / Spot Light *EEF	-	-
TOTAL LIGHT POINTS		-	-

POWER

⌈ <sup>4</sup> xxx⌋	Quad Power Point	-	-
⌈ <sup>1</sup> x⌋	Single Power Point	-	-
⌈ <sup>2</sup> xx⌋	Double Power Point	-	-
⌈W/P <sup>2</sup> xx⌋	Double W/Proof Power Point	-	-
⌈W/P <sup>1</sup> x⌋	Single W/Proof Power Point	-	-
⌈T.V⌋	T.V.Point	-	-
⌈ph⌋	Phone Point	-	-
⌈≡≡⌋	T.V Antenna & Booster inc. SGPO	-	-
⌈D.W⌋	Dishwasher Point	-	-
⌈R.H⌋	Rangehood Point	-	-
⌈M.W⌋	Microwave Point	-	-
⌈O.V⌋	Oven Point	-	-
⌈C.T⌋	Cook Top Iso point	-	-

MISCELLANEOUS

⌈E⌋	Exhaust Fan	-	-
⌈⦶⌋	Ceiling Fan (stainless steel)	-	-
⌈⦶⦶⌋	Ceiling Fan & Light (white) *EEF	-	-
⌈▀⌋	Meter Box	-	-
⌈HWS⌋	Hot Water Service	-	-
⌈SA⌋	Smoke Detectors	-	-
⌈ds⌋	Dimmer Switch	-	-
⌈2 way⌋	Two Way Switch	-	-
⌈AC⌋	A/C Condensor Iso Point	-	-

