

Element Series

NSW ONLY



Mandalay 335 Resort Facade Shown - for illustrative purposes only

NSW ONLY

These plans are for use in NSW only and do not comply with NCC 2022 Livable Housing Design requirements. Please refer to your state or territory regulations for further details.

PLANS ARE SUBJECT TO LOCAL COUNCIL & DEVELOPERS GUIDELINES (COVENANTS).

<div>MANDALAY 280</div> <div>Resort Streetscape</div> <div>Copyright© Archiman Pty Ltd exclusive To G.J. Gardner Homes</div> <div>Concept plans only, final working drawings may vary</div>	CONCEPT	FLOOR AREAS	16m + Lot Width	<div>G.J. Gardner.</div> <div>HOMES</div>
	DATE:	LIVING 213.5 m ² GARAGE 37.9 m ² ALFRESCO 23.3 m ² PORTICO 5.5 m ²		
	12/04/2023	TOTAL 280.2 m ²		

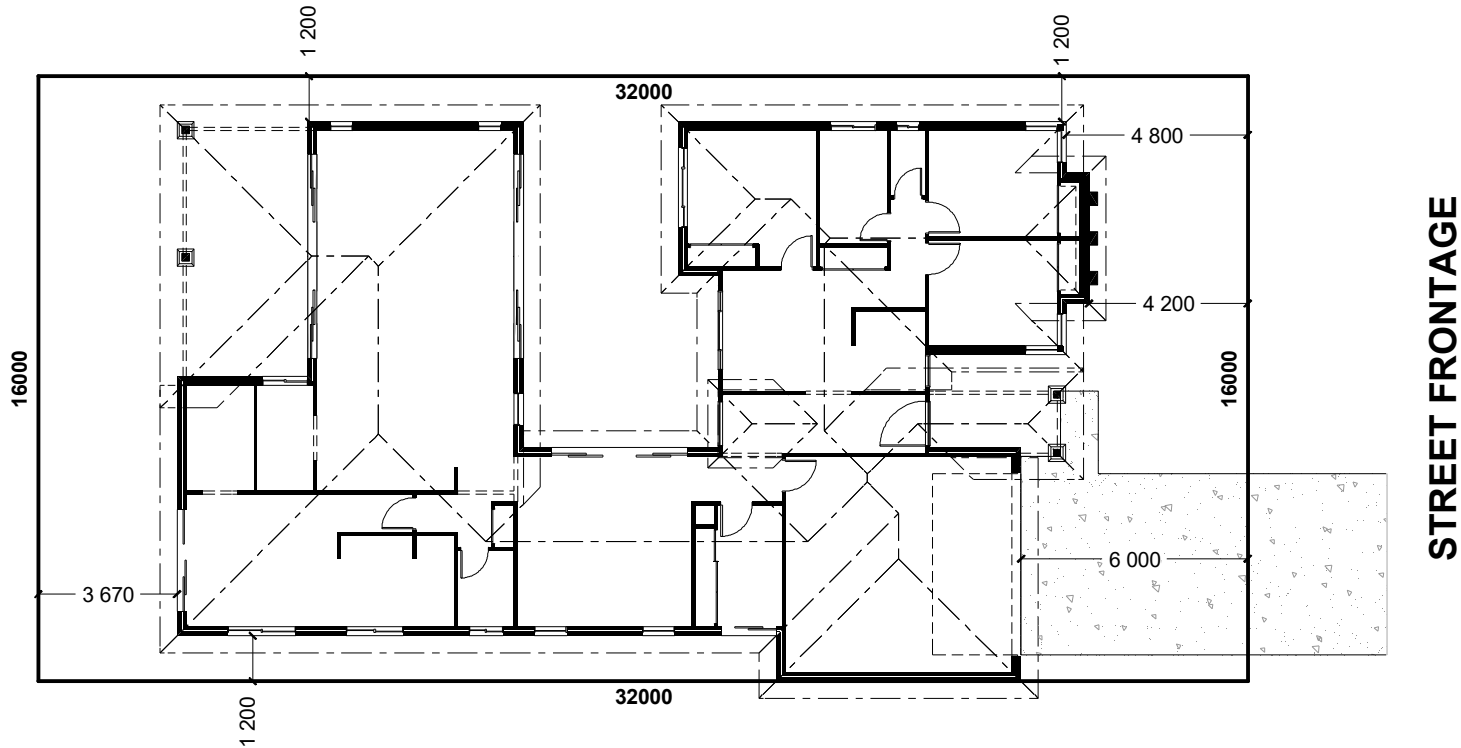


NSW ONLY

These plans are for use in NSW only and do not comply with NCC 2022 Livable Housing Design requirements. Please refer to your state or territory regulations for further details.

PLANS ARE SUBJECT TO LOCAL COUNCIL & DEVELOPERS GUIDELINES (COVENANTS).

<div>MANDALAY 280</div> <div>Resort Streetscape</div>	CONCEPT	FLOOR AREAS		16m + Lot Width	PRESENTATION PLAN	<div>G.J. Gardner.</div> <div>HOMES</div>
	DATE: 12/04/2023	LIVING GARAGE ALFRESCO PORTICO	213.5 m ² 37.9 m ² 23.3 m ² 5.5 m ²			
		TOTAL	280.2 m ²			
Copyright© Archiman Pty Ltd exclusive To G.J. Gardner Homes Concept plans only, final working drawings may vary						



INDICATIVE SITE PLAN ONLY. ACTUAL LOT WIDTH, SIZE AND SETBACKS MAY VARY TO SUIT LOCAL REQUIREMENT'S AND MAY REQUIRE A LARGER SITE OR PLAN MODIFICATIONS TO SUIT A PARTICULAR SITE.

NSW ONLY

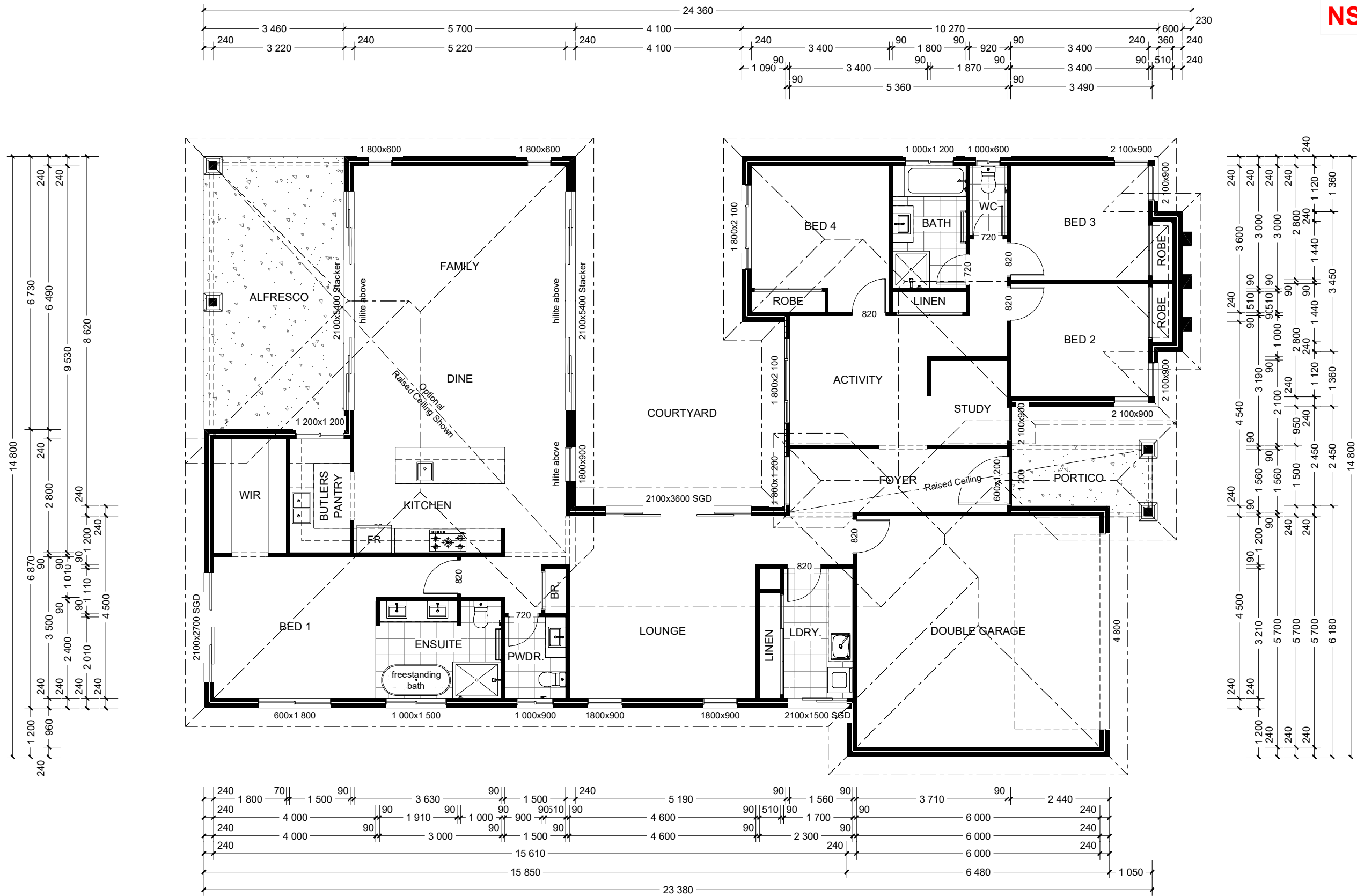
These plans are for use in NSW only and do not comply with NCC 2022 Livable Housing Design requirements. Please refer to your state or territory regulations for further details.

PLANS ARE SUBJECT TO LOCAL COUNCIL & DEVELOPERS GUIDELINES (COVENANTS).

<div>MANDALAY 280</div> <div>Resort Streetscape</div>	CONCEPT	FLOOR AREAS		16m + Lot Width	SITE PLAN Scale 1:200	<div>G.J. Gardner.</div> <div>HOMES</div>
	DATE: 12/04/2023	LIVING GARAGE ALFRESCO PORTICO	213.5 m² 37.9 m² 23.3 m² 5.5 m²			
		TOTAL	280.2 m²			
Copyright© Archiman Pty Ltd exclusive To G.J. Gardner Homes Concept plans only, final working drawings may vary						

Element Series

NSW ONLY



NSW ONLY

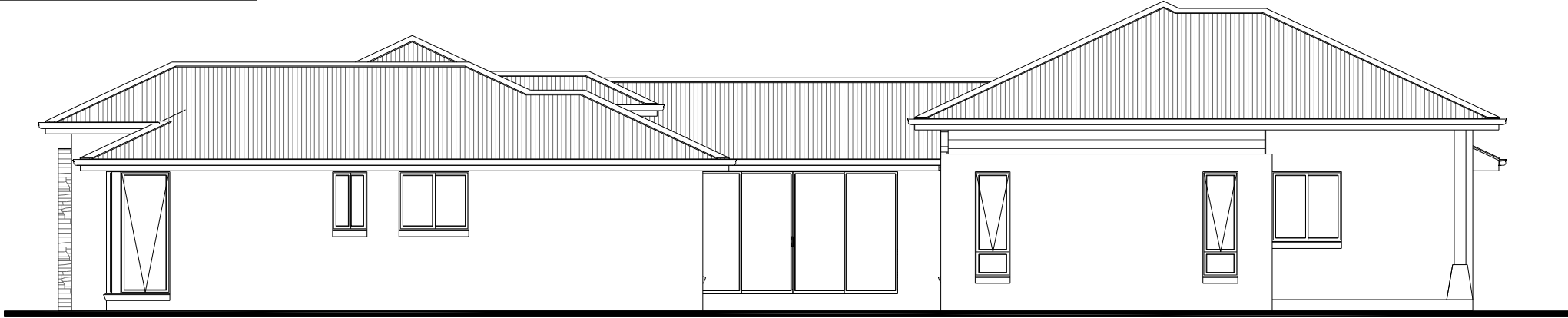
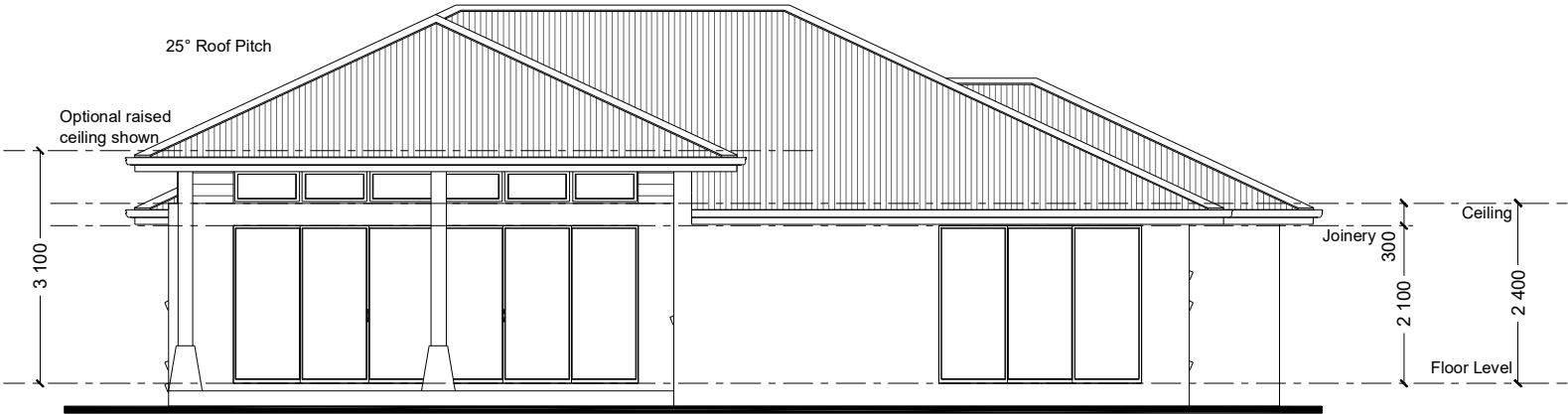
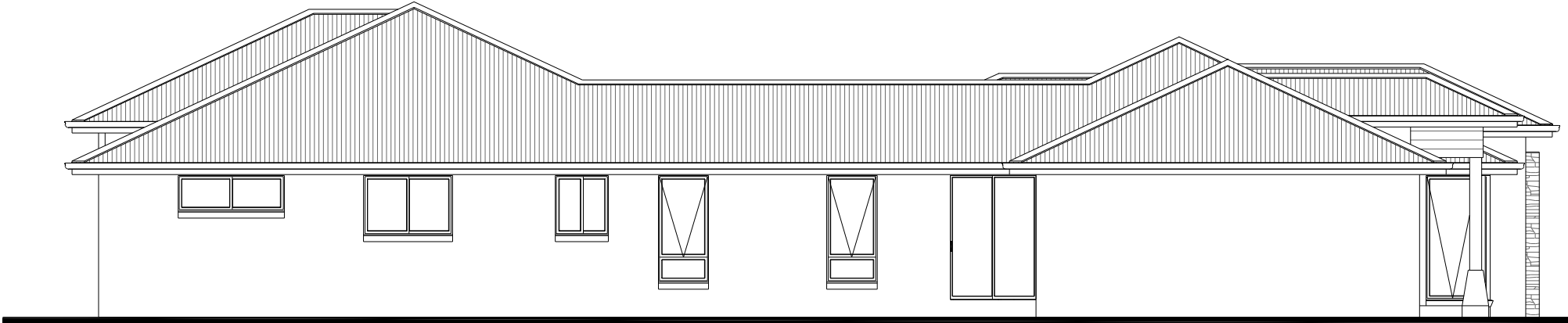
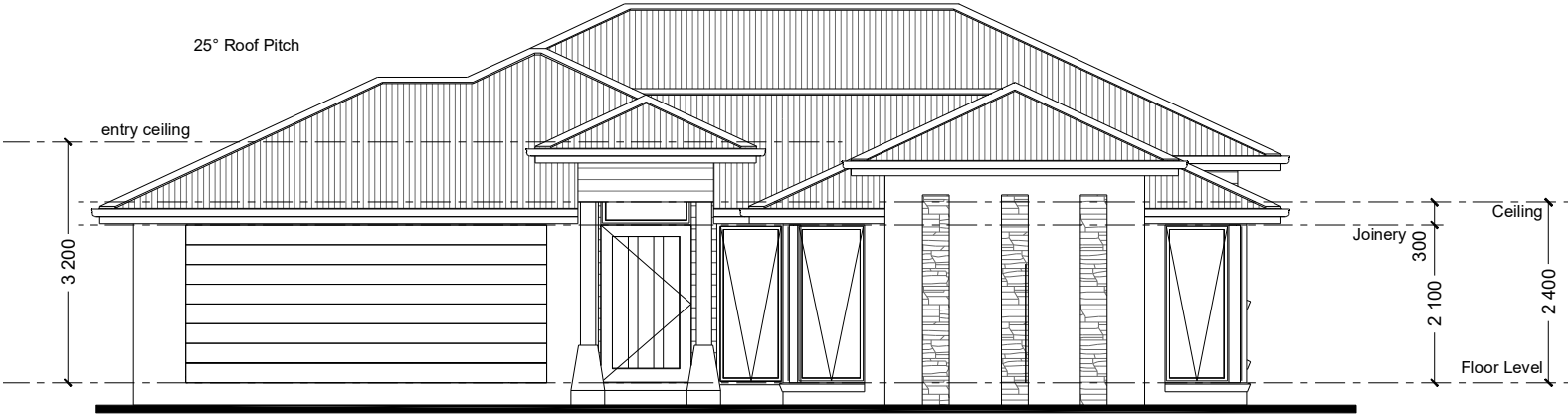
These plans are for use in NSW only and do not comply with NCC 2022 Livable Housing Design requirements. Please refer to your state or territory regulations for further details.

PLANS ARE SUBJECT TO LOCAL COUNCIL & DEVELOPERS GUIDELINES (COVENANTS).

<div>MANDALAY 280</div> <div>Resort Streetscape</div>	CONCEPT	FLOOR AREAS	16m + Lot Width	FLOOR PLAN Scale 1:100	<div>G.J. Gardner.</div> <div>HOMES</div>
	DATE: 12/04/2023	LIVING 213.5 m² GARAGE 37.9 m² ALFRESCO 23.3 m² PORTICO 5.5 m²			
		TOTAL 280.2 m²			
Copyright© Archiman Pty Ltd exclusive To G.J. Gardner Homes Concept plans only, final working drawings may vary					

Element Series

NSW ONLY



NSW ONLY

These plans are for use in NSW only and do not comply with NCC 2022 Livable Housing Design requirements. Please refer to your state or territory regulations for further details.

PLANS ARE SUBJECT TO LOCAL COUNCIL & DEVELOPERS GUIDELINES (COVENANTS).

MANDALAY 280

Resort Streetscape

Copyright© Archiman Pty Ltd exclusive To G.J. Gardner Homes
Concept plans only, final working drawings may vary

CONCEPT

DATE:

12/04/2023

FLOOR AREAS

LIVING 213.5 m²
GARAGE 37.9 m²
ALFRESCO 23.3 m²
PORTICO 5.5 m²

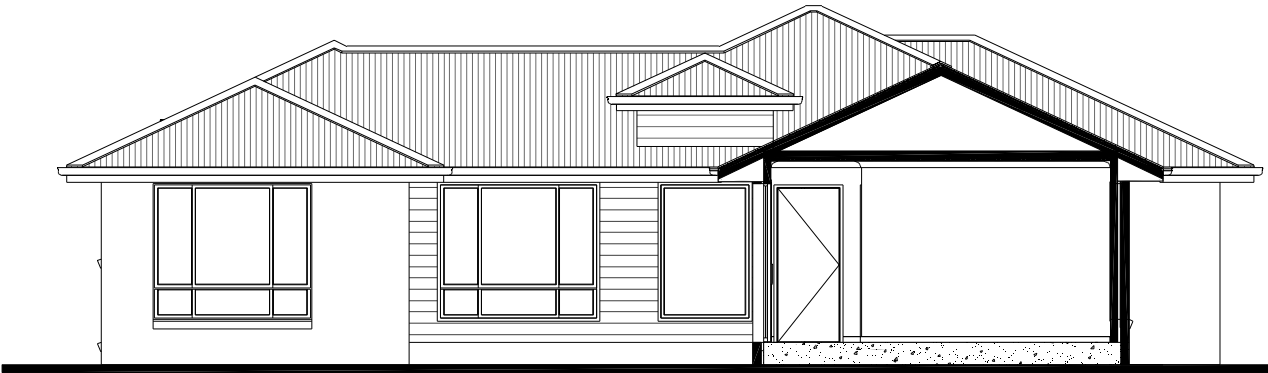
TOTAL 280.2 m²

16m + Lot Width

ELEVATIONS Scale 1:100

G.J. Gardner.

HOMES



NSW ONLY

These plans are for use in NSW only and do not comply with NCC 2022 Livable Housing Design requirements. Please refer to your state or territory regulations for further details.

PLANS ARE SUBJECT TO LOCAL COUNCIL & DEVELOPERS GUIDELINES (COVENANTS).

MANDALAY 280

Resort Streetscape

Copyright© Archiman Pty Ltd exclusive To G.J. Gardner Homes
Concept plans only, final working drawings may vary

CONCEPT

FLOOR AREAS

16m + Lot Width

ELEVATIONS Scale 1:100

DATE:

12/04/2023

LIVING 213.5 m²
GARAGE 37.9 m²
ALFRESCO 23.3 m²
PORTICO 5.5 m²

TOTAL 280.2 m²

G.J. Gardner.

HOMES

ELECTRICAL LEGEND

NOTE:
ALL ELECTRICAL WORK MUST
BE COMPLETED TO THE
RELEVANT AUSTRALIAN
STANDARDS AND THE
NATIONAL CONSTRUCTION
CODE OF AUSTRALIA.

LIGHTING *EEF (denotes energy efficient light fittings)

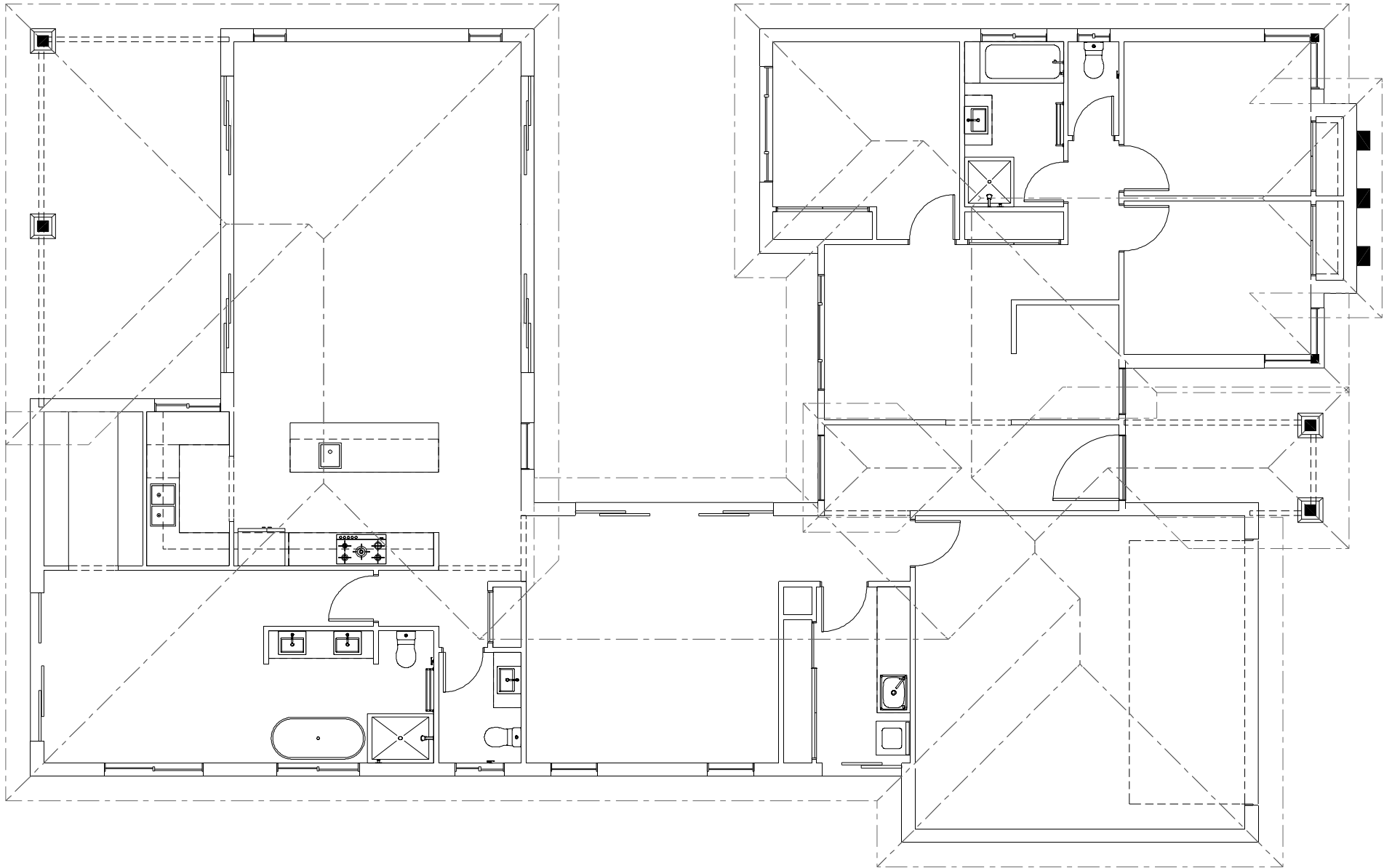
Symbol	Description	Spec.	Extra
○	Ceiling Light *EEF	-	-
●	Down Light *EEF	-	-
H1800 H	Wall Light *EEF approx height	-	-
✕ ✕	Pendant / Track Light *EEF	-	-
∞ ∞	IXL Tastic (or similar)	-	-
▬	Batten Fluro Light *EEF	-	-
⊖	Round Fluro Light *EEF	-	-
⬆	Flood / Spot Light *EEF	-	-
TOTAL LIGHT POINTS		-	-

POWER

<div>4 ✕ ✕ ✕ ✕</div>	Quad Power Point	-	-
<div>1 ✕</div>	Single Power Point	-	-
<div>2 ✕ ✕</div>	Double Power Point	-	-
<div>W/P 2 ✕ ✕</div>	Double W/Proof Power Point	-	-
<div>W/P 1 ✕</div>	Single W/Proof Power Point	-	-
<div>T.V</div>	T.V.Point	-	-
<div>ph ▲</div>	Phone Point	-	-
<div>⚡</div>	T.V Antenna & Booster inc. SGPO	-	-
<div>D.W</div>	Dishwasher Point	-	-
<div>R.H</div>	Rangehood Point	-	-
<div>M.W</div>	Microwave Point	-	-
<div>O.V</div>	Oven Point	-	-
<div>C.T</div>	Cook Top Iso point	-	-

MISCELLANEOUS

<div>E</div>	Exhaust Fan	-	-
<div>⬮</div>	Ceiling Fan (stainless steel)	-	-
<div>⬮ *EEF</div>	Ceiling Fan & Light (white) *EEF	-	-
<div>⬮</div>	Meter Box	-	-
<div>HWS</div>	Hot Water Service	-	-
<div>SA</div>	Smoke Detectors	-	-
<div>ds</div>	Dimmer Switch	-	-
<div>2 way • Switch</div>	Two Way Switch	-	-
<div>AC</div>	A/C Condensor Iso Point	-	-



Element Series

NSW ONLY

NSW ONLY

These plans are for use in NSW only and do not comply with NCC 2022 Livable Housing Design requirements.
Please refer to your state or territory regulations for further details.

PLANS ARE SUBJECT TO LOCAL COUNCIL & DEVELOPERS GUIDELINES (COVENANTS).

<div>MANDALAY 280</div> <div>Resort Streetscape</div> <div>Copyright© Archiman Pty Ltd exclusive To G.J. Gardner Homes Concept plans only, final working drawings may vary</div>	CONCEPT	FLOOR AREAS	16m + Lot Width	ELECTRICAL PLAN Scale 1:100	<div>G.J. Gardner.</div> <div>HOMES</div>
	DATE: 12/04/2023	LIVING 213.5 m² GARAGE 37.9 m² ALFRESCO 23.3 m² PORTICO 5.5 m²			
		TOTAL 280.2 m²			