

Element Series

NSW ONLY



Mandalay 335 Resort Facade Shown - for illustrative purposes only

NSW ONLY

These plans are for use in NSW only and do not comply with NCC 2022 Livable Housing Design requirements. Please refer to your state or territory regulations for further details.

PLANS ARE SUBJECT TO LOCAL COUNCIL & DEVELOPERS GUIDELINES (COVENANTS).

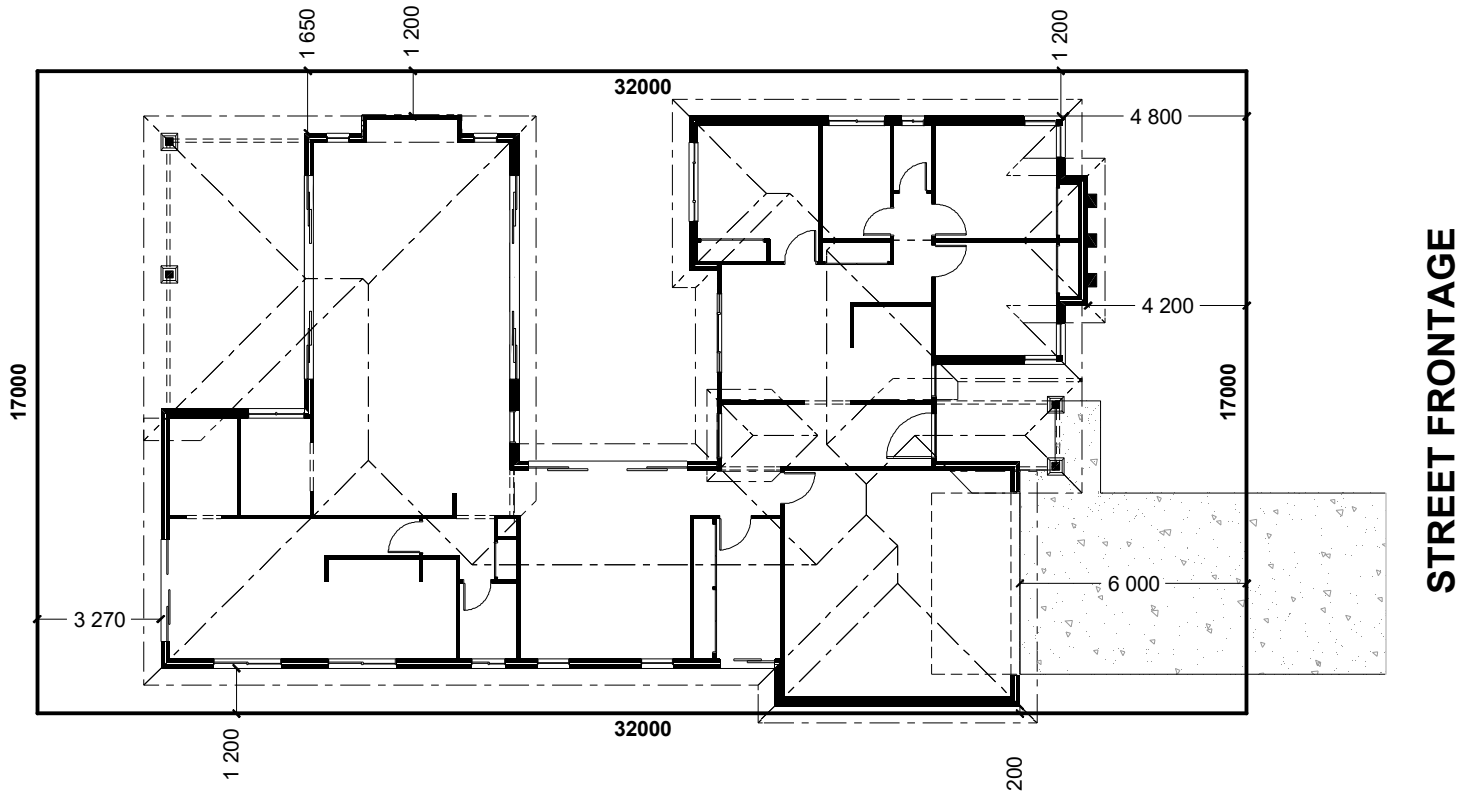
<div>MANDALAY 300</div> <div>Resort Streetscape</div> <div>Copyright© Archiman Pty Ltd exclusive To G.J. Gardner Homes</div> <div>Concept plans only, final working drawings may vary</div>	CONCEPT	FLOOR AREAS	17m + Lot Width	<div>G.J. Gardner.</div> <div>HOMES</div>
	DATE:	LIVING 227.1 m ² GARAGE 39.7 m ² ALFRESCO 27.7 m ² PORTICO 5.5 m ²		
	03/08/2018	TOTAL 300.0 m ²		

NSW ONLY



PLANS ARE SUBJECT TO LOCAL COUNCIL & DEVELOPERS GUIDELINES (COVENANTS).

<div><div>MANDALAY 300</div><div>Resort Streetscape</div><div>Copyright© Archiman Pty Ltd exclusive To G.J. Gardner Homes Concept plans only, final working drawings may vary</div></div>		CONCEPT	FLOOR AREAS		17m + Lot Width	PRESENTATION PLAN	<div>G.J. Gardner.</div> <div>HOMES</div>
		DATE: 03/08/2018	LIVING	227.1 m²			
			GARAGE	39.7 m²			
		ALFRESCO	27.7 m²				
		PORTICO	5.5 m²				
		TOTAL	300.0 m²				



INDICATIVE SITE PLAN ONLY. ACTUAL LOT WIDTH, SIZE AND SETBACKS MAY VARY TO SUIT LOCAL REQUIREMENT'S AND MAY REQUIRE A LARGER SITE OR PLAN MODIFICATIONS TO SUIT A PARTICULAR SITE.

NSW ONLY

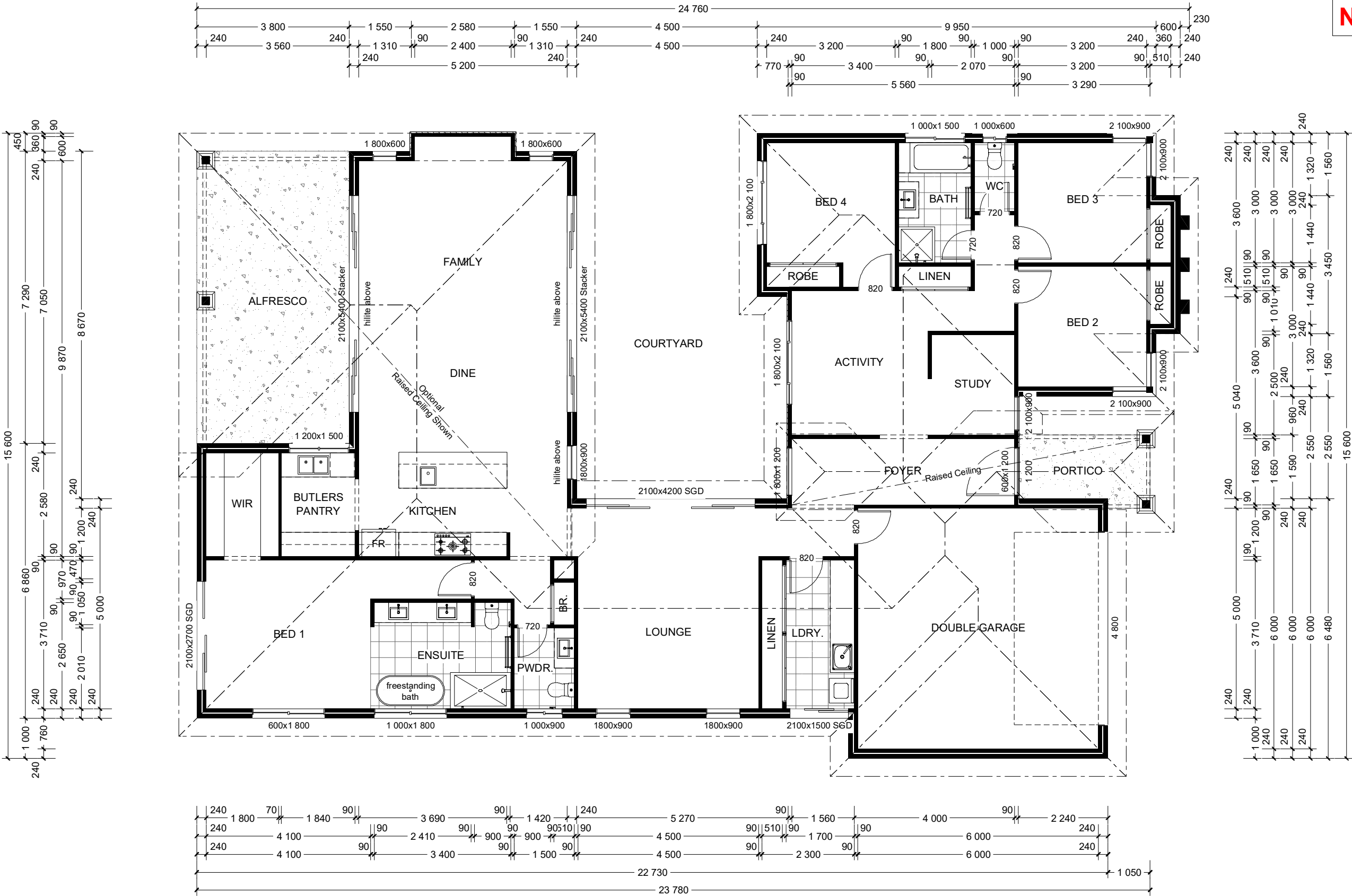
These plans are for use in NSW only and do not comply with NCC 2022 Livable Housing Design requirements. Please refer to your state or territory regulations for further details.

PLANS ARE SUBJECT TO LOCAL COUNCIL & DEVELOPERS GUIDELINES (COVENANTS).

<div>MANDALAY 300</div> <div>Resort Streetscape</div>	CONCEPT	FLOOR AREAS	17m + Lot Width	SITE PLAN Scale 1:200	<div>G.J. Gardner.</div> <div>HOMES</div>
	DATE: 03/08/2018	LIVING 227.1 m² GARAGE 39.7 m² ALFRESCO 27.7 m² PORTICO 5.5 m²			
		TOTAL 300.0 m²			
Copyright© Archiman Pty Ltd exclusive To G.J. Gardner Homes Concept plans only, final working drawings may vary					

Element Series

NSW ONLY



NSW ONLY

These plans are for use in NSW only and do not comply with NCC 2022 Livable Housing Design requirements. Please refer to your state or territory regulations for further details.

PLANS ARE SUBJECT TO LOCAL COUNCIL & DEVELOPERS GUIDELINES (COVENANTS).

MANDALAY 300

Resort Streetscape

Copyright© Archiman Pty Ltd exclusive To G.J. Gardner Homes
Concept plans only, final working drawings may vary

CONCEPT

DATE:

03/08/2018

FLOOR AREAS

LIVING 227.1 m²
GARAGE 39.7 m²
ALFRESCO 27.7 m²
PORTICO 5.5 m²

TOTAL 300.0 m²

17m + Lot Width

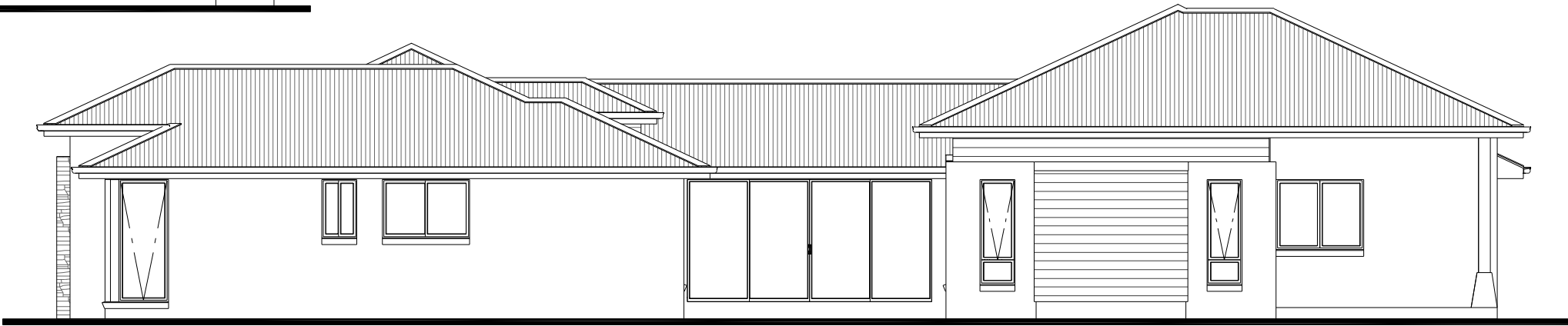
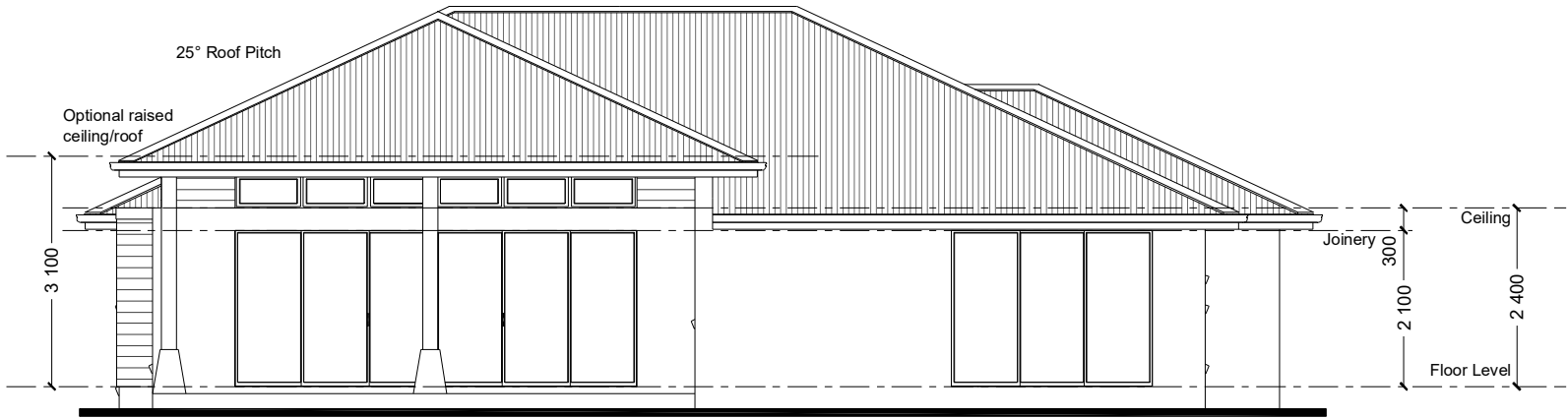
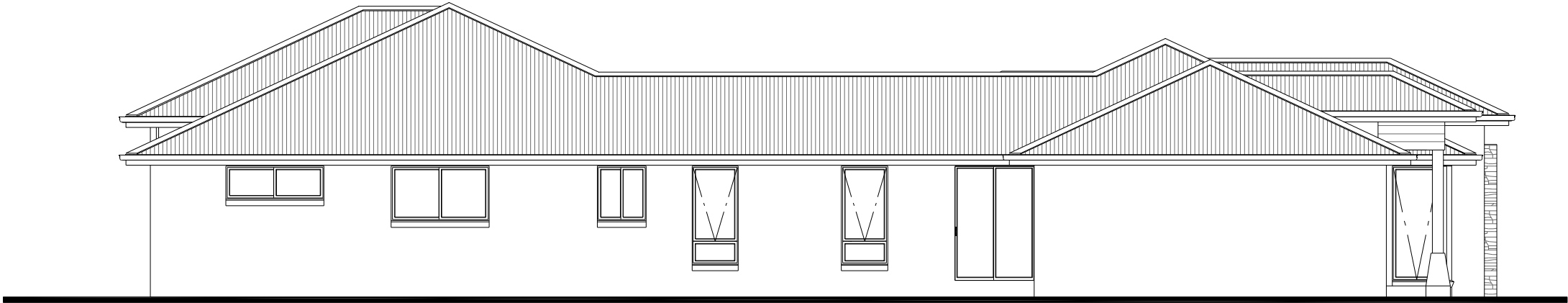
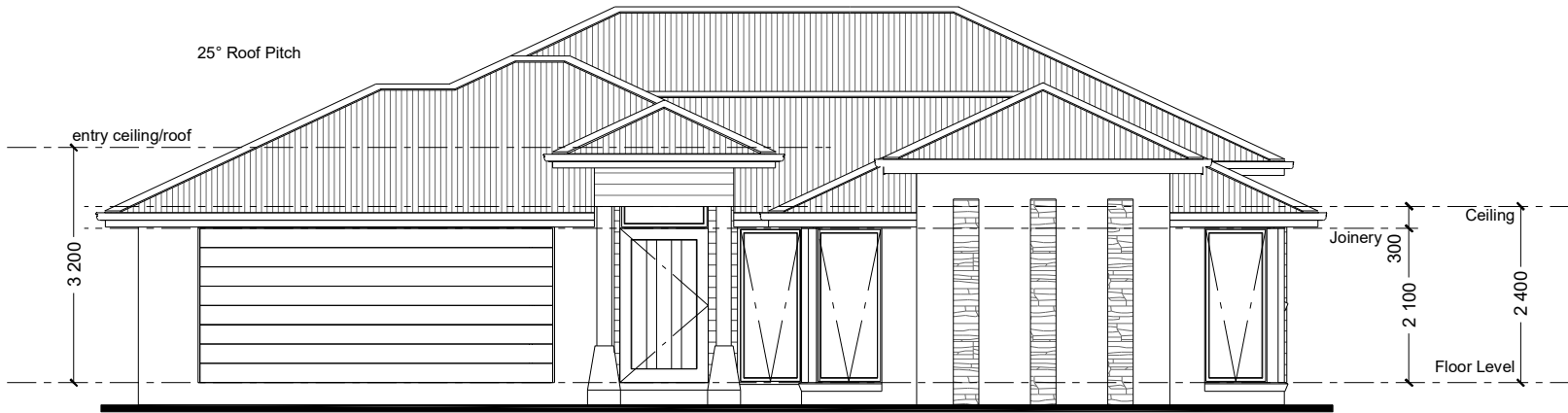
FLOOR PLAN Scale 1:100

G.J. Gardner.

HOMES

Element Series

NSW ONLY



NSW ONLY

These plans are for use in NSW only and do not comply with NCC 2022 Livable Housing Design requirements. Please refer to your state or territory regulations for further details.

PLANS ARE SUBJECT TO LOCAL COUNCIL & DEVELOPERS GUIDELINES (COVENANTS).

MANDALAY 300

Resort Streetscape

Copyright© Archiman Pty Ltd exclusive To G.J. Gardner Homes
Concept plans only, final working drawings may vary

CONCEPT

DATE:

03/08/2018

FLOOR AREAS

LIVING 227.1 m²
GARAGE 39.7 m²
ALFRESCO 27.7 m²
PORTICO 5.5 m²

TOTAL 300.0 m²

17m + Lot Width

ELEVATIONS Scale 1:100

G.J. Gardner.

HOMES

Element Series

NSW ONLY



NSW ONLY

These plans are for use in NSW only and do not comply with NCC 2022 Livable Housing Design requirements. Please refer to your state or territory regulations for further details.



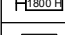
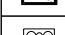
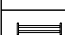



PLANS ARE SUBJECT TO LOCAL COUNCIL & DEVELOPERS GUIDELINES (COVENANTS).

<div>MANDALAY 300</div> <div>Resort Streetscape</div> <div>Copyright© Archiman Pty Ltd exclusive To G.J. Gardner Homes</div> <div>Concept plans only, final working drawings may vary</div>	CONCEPT	FLOOR AREAS	17m + Lot Width	ELEVATIONS Scale 1:100	<div>G.J. Gardner.</div> <div>HOMES</div>
	DATE: 03/08/2018	LIVING 227.1 m² GARAGE 39.7 m² ALFRESCO 27.7 m² PORTICO 5.5 m²			
		TOTAL 300.0 m²			


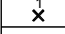
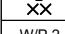
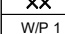
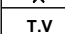
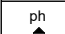
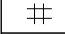
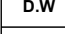
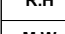
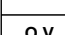
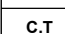
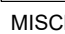
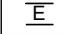
ELECTRICAL LEGEND

NOTE:
ALL ELECTRICAL WORK MUST
BE COMPLETED TO THE
RELEVANT AUSTRALIAN
STANDARDS AND THE
NATIONAL CONSTRUCTION
CODE OF AUSTRALIA.




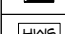
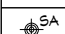

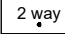
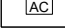

LIGHTING *EEF (denotes energy efficient light fittings)

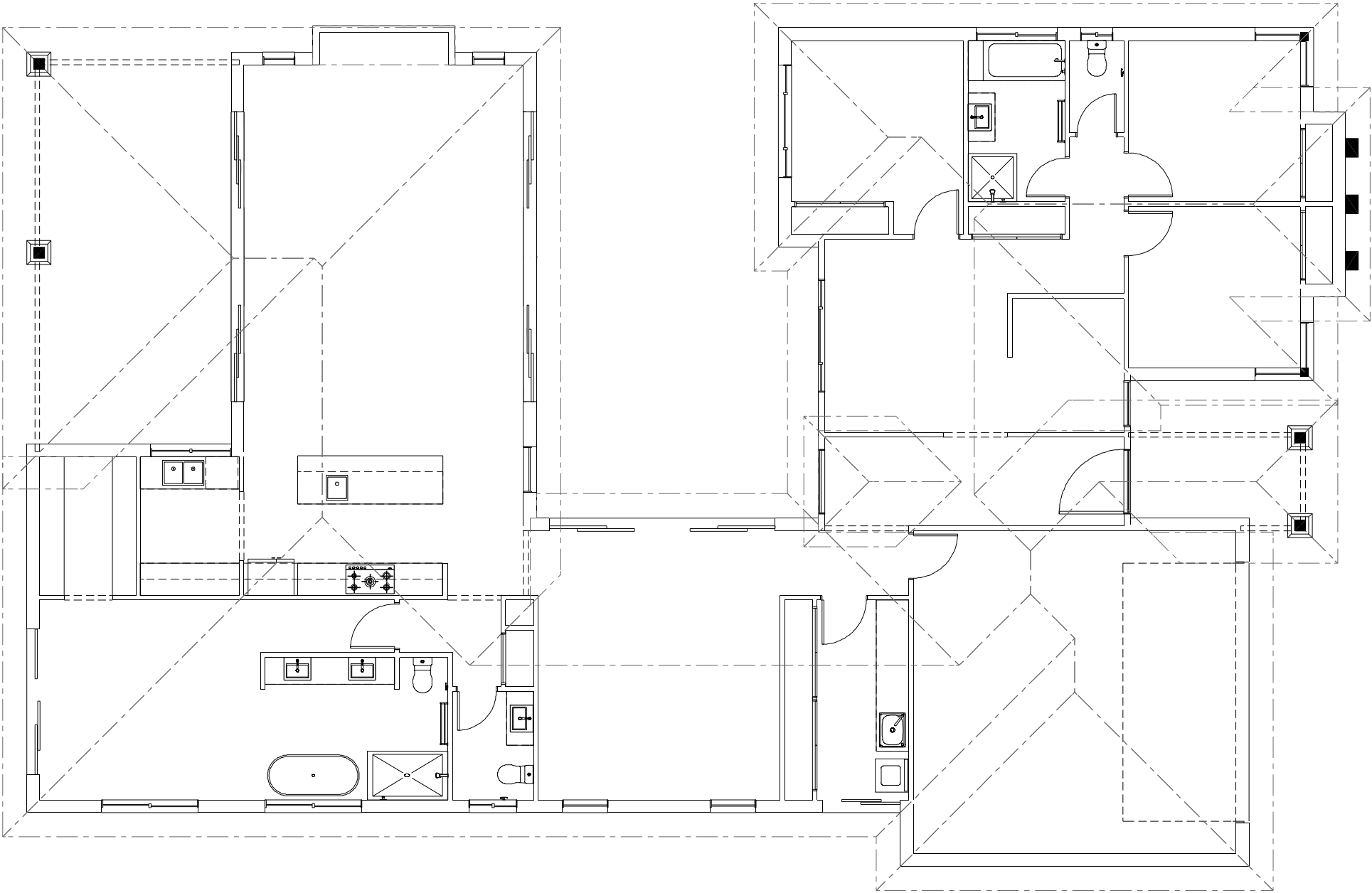
Symbol	Description	Spec.	Extra
	Ceiling Light *EEF	-	-
	Down Light *EEF	-	-
	Wall Light *EEF approx height	-	-
	Pendant / Track Light *EEF	-	-
	IXL Tastic (or similar)	-	-
	Batten Fluro Light *EEF	-	-
	Round Fluro Light *EEF	-	-
	Flood / Spot Light *EEF	-	-
TOTAL LIGHT POINTS		-	-

POWER

	Quad Power Point	-	-
	Single Power Point	-	-
	Double Power Point	-	-
	Double W/Proof Power Point	-	-
	Single W/Proof Power Point	-	-
	T.V. Point	-	-
	Phone Point	-	-
	T.V. Antenna & Booster inc. SGPO	-	-
	Dishwasher Point	-	-
	Rangehood Point	-	-
	Microwave Point	-	-
	Oven Point	-	-
	Cook Top Iso point	-	-

MISCELLANEOUS

	Exhaust Fan	-	-
	Ceiling Fan (stainless steel)	-	-
	Ceiling Fan & Light (white) *EEF	-	-
	Meter Box	-	-
	Hot Water Service	-	-
	Smoke Detectors	-	-
	Dimmer Switch	-	-
	Two Way Switch	-	-
	A/C Condensor Iso Point	-	-



NSW ONLY

These plans are for use in NSW only and do not comply with NCC 2022 Livable Housing Design requirements. Please refer to your state or territory regulations for further details.

PLANS ARE SUBJECT TO LOCAL COUNCIL & DEVELOPERS GUIDELINES (COVENANTS).

<div>MANDALAY 300</div> <div>Resort Streetscape</div> <div>Copyright© Archiman Pty Ltd exclusive To G.J. Gardner Homes</div> <div>Concept plans only, final working drawings may vary</div>	CONCEPT	FLOOR AREAS	17m + Lot Width	ELECTRICAL PLAN Scale 1:100	<div>G.J. Gardner.</div> <div>HOMES</div>
	DATE:	LIVING 227.1 m² GARAGE 39.7 m² ALFRESCO 27.7 m² PORTICO 5.5 m²			
	03/08/2018	TOTAL 300.0 m²			