

# Element Series

NSW ONLY



Mandalay 335 Resort Facade Shown - for illustrative purposes only

NSW ONLY

These plans are for use in NSW only and do not comply with NCC 2022 Livable Housing Design requirements. Please refer to your state or territory regulations for further details.

PLANS ARE SUBJECT TO LOCAL COUNCIL & DEVELOPERS GUIDELINES (COVENANTS).

<div>MANDALAY 335</div> <div>Resort Streetscape</div> <div>Copyright© Archiman Pty Ltd exclusive To G.J. Gardner Homes</div> <div>Concept plans only, final working drawings may vary</div>	CONCEPT	FLOOR AREAS	18m + Lot Width	<div>G.J. Gardner.</div> <div>HOMES</div>
	DATE:	LIVING 260.1 m <sup>2</sup> GARAGE 39.5 m <sup>2</sup> ALFRESCO 30.0 m <sup>2</sup> PORTICO 5.7 m <sup>2</sup>		
	12/04/2023	TOTAL 335.3 m <sup>2</sup>		



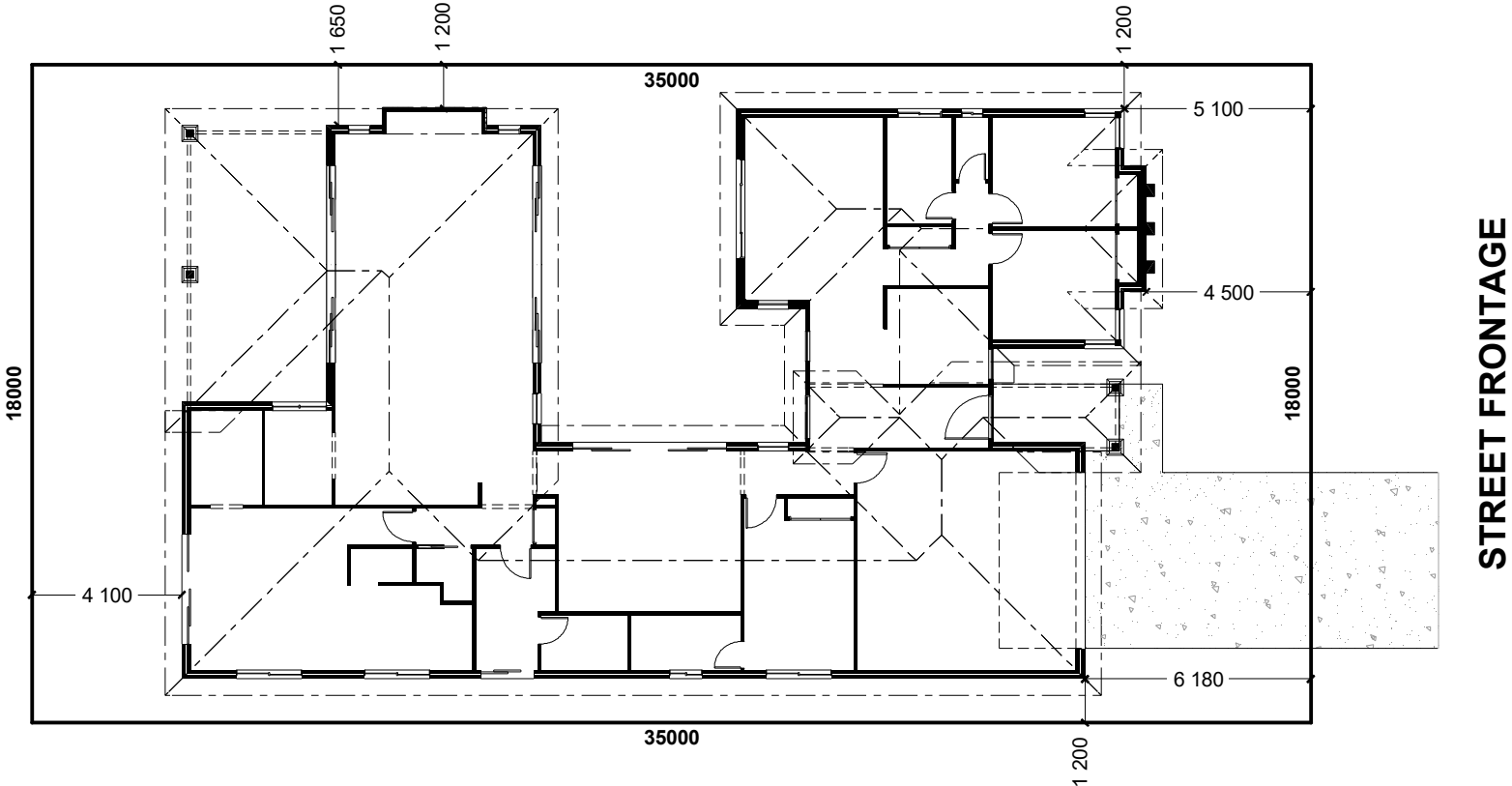


NSW ONLY

These plans are for use in NSW only and do not comply with NCC 2022 Livable Housing Design requirements. Please refer to your state or territory regulations for further details.

PLANS ARE SUBJECT TO LOCAL COUNCIL & DEVELOPERS GUIDELINES (COVENANTS).

<div>MANDALAY 335</div> <div>Resort Streetscape</div>	CONCEPT	FLOOR AREAS	18m + Lot Width	PRESENTATION PLAN	<div>G.J. Gardner.</div> <div>HOMES</div>
	DATE:  12/04/2023	LIVING 260.1 m² GARAGE 39.5 m² ALFRESCO 30.0 m² PORTICO 5.7 m²			
		TOTAL 335.3 m²			
Copyright© Archiman Pty Ltd exclusive To G.J. Gardner Homes Concept plans only, final working drawings may vary					



INDICATIVE SITE PLAN ONLY. ACTUAL LOT WIDTH, SIZE AND SETBACKS MAY VARY TO SUIT LOCAL REQUIREMENT'S AND MAY REQUIRE A LARGER SITE OR PLAN MODIFICATIONS TO SUIT A PARTICULAR SITE.

NSW ONLY

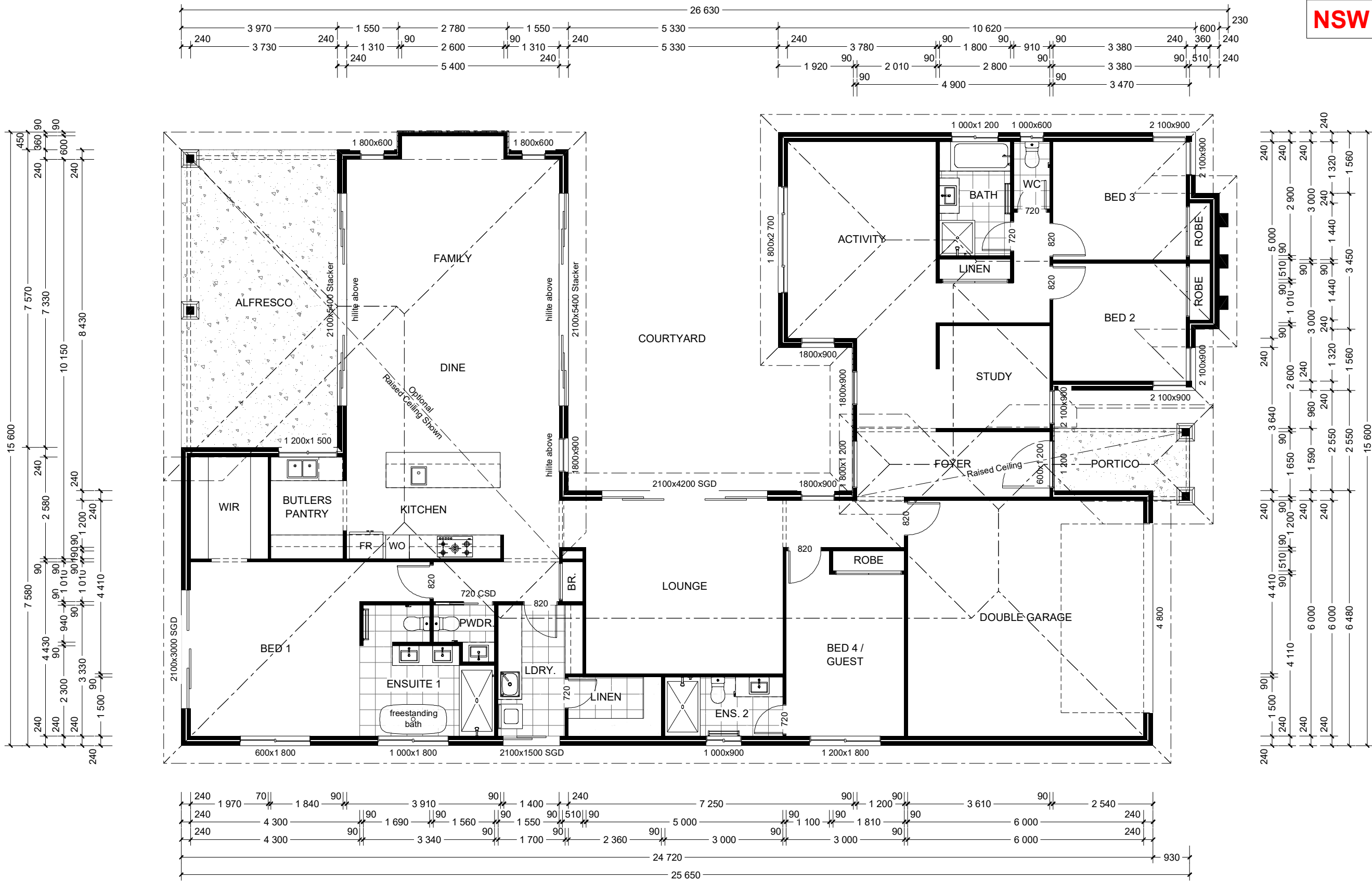
These plans are for use in NSW only and do not comply with NCC 2022 Livable Housing Design requirements. Please refer to your state or territory regulations for further details.

PLANS ARE SUBJECT TO LOCAL COUNCIL & DEVELOPERS GUIDELINES (COVENANTS).

MANDALAY 335 Resort Streetscape	CONCEPT	FLOOR AREAS		18m + Lot Width	SITE PLAN Scale 1:200	G.J. Gardner. HOMES
	DATE: 12/04/2023	LIVING	260.1 m <sup>2</sup>			
		GARAGE	39.5 m <sup>2</sup>			
Copyright© Archiman Pty Ltd exclusive To G.J. Gardner Homes Concept plans only, final working drawings may vary		ALFRESCO	30.0 m <sup>2</sup>			
		PORTICO	5.7 m <sup>2</sup>			
		TOTAL	335.3 m <sup>2</sup>			

Element Series

NSW ONLY



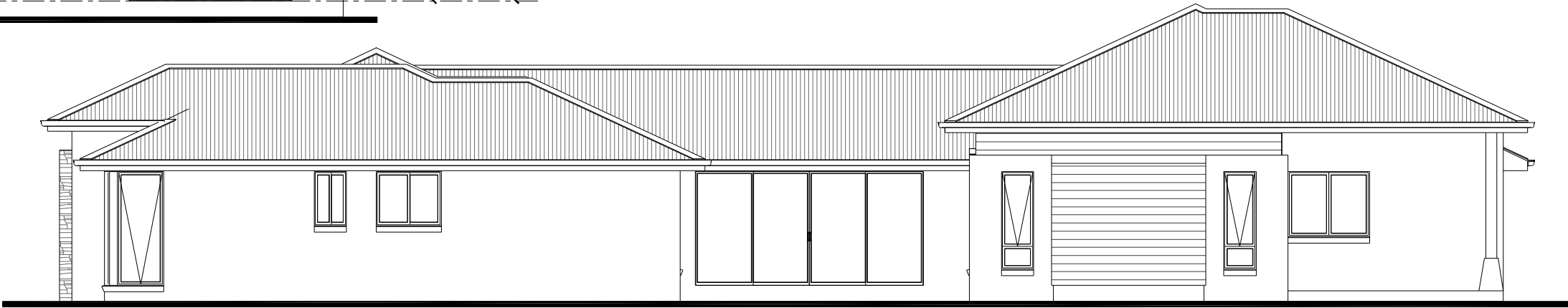
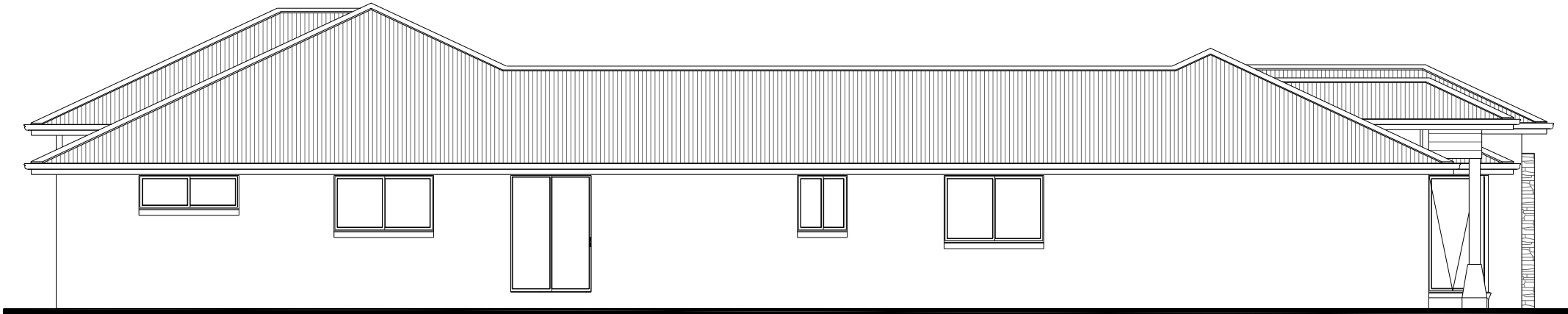
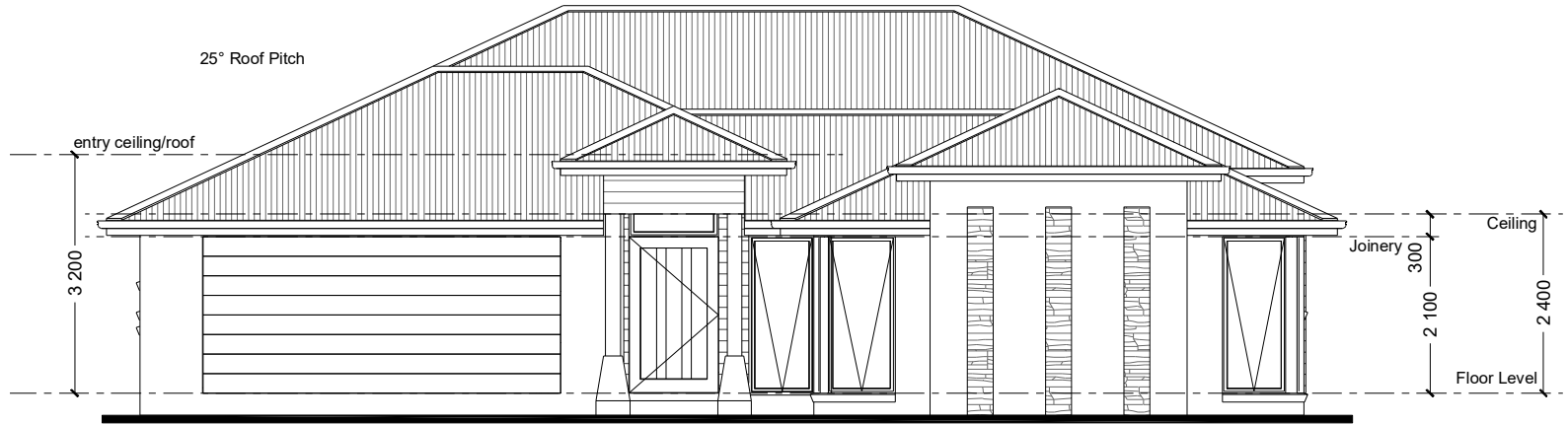
NSW ONLY These plans are for use in NSW only and do not comply with NCC 2022 Livable Housing Design requirements. Please refer to your state or territory regulations for further details.

PLANS ARE SUBJECT TO LOCAL COUNCIL & DEVELOPERS GUIDELINES (COVENANTS).

<div>MANDALAY 335</div> <div>Resort Streetscape</div>	CONCEPT	FLOOR AREAS	18m + Lot Width	FLOOR PLAN Scale 1:100	<div>G.J. Gardner.</div> <div>HOMES</div>
	DATE:  12/04/2023	LIVING 260.1 m² GARAGE 39.5 m² ALFRESCO 30.0 m² PORTICO 5.7 m²			
		TOTAL 335.3 m²			
Copyright© Archiman Pty Ltd exclusive To G.J. Gardner Homes Concept plans only, final working drawings may vary					

# Element Series

NSW ONLY



NSW ONLY

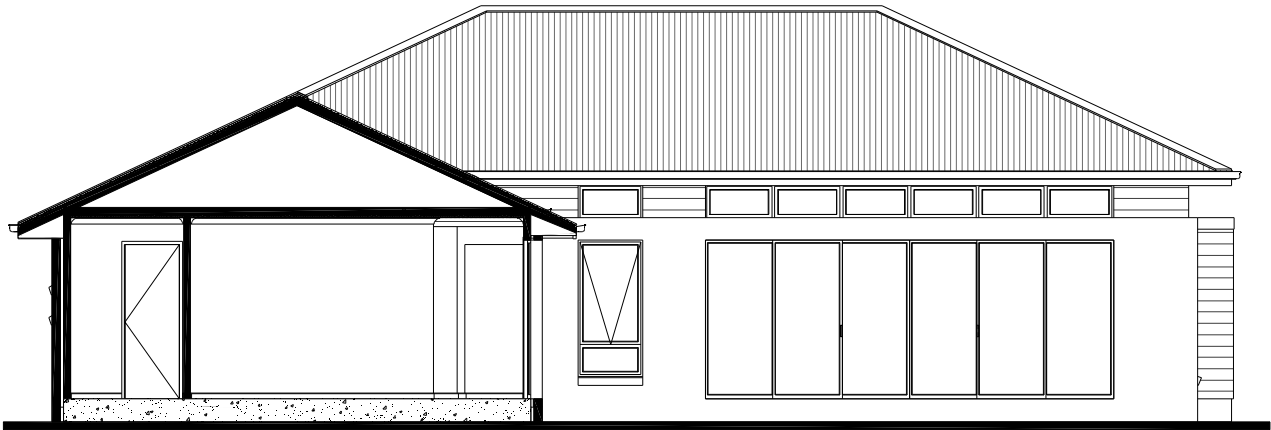
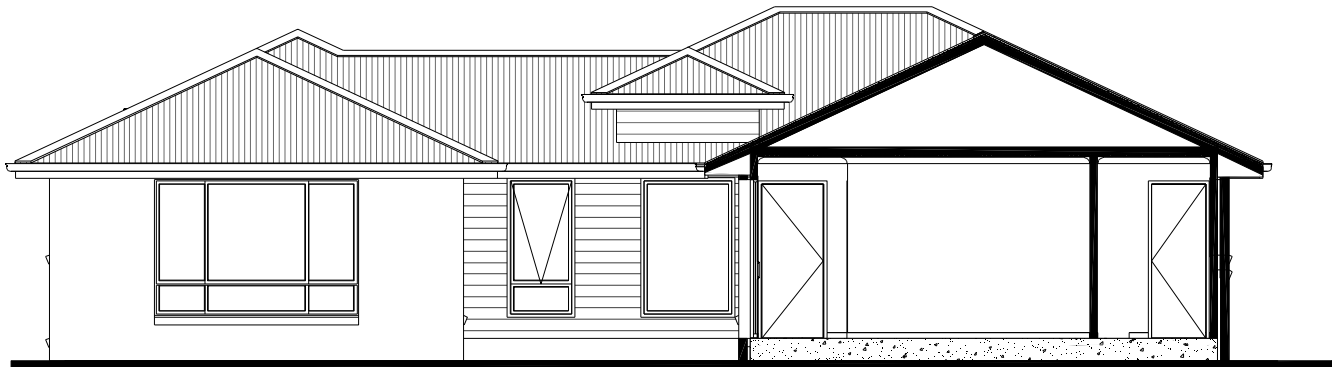
These plans are for use in NSW only and do not comply with NCC 2022 Livable Housing Design requirements. Please refer to your state or territory regulations for further details.

PLANS ARE SUBJECT TO LOCAL COUNCIL & DEVELOPERS GUIDELINES (COVENANTS).

<div>MANDALAY 335</div> <div>Resort Streetscape</div> <div>Copyright© Archiman Pty Ltd exclusive To G.J. Gardner Homes</div> <div>Concept plans only, final working drawings may vary</div>	CONCEPT	FLOOR AREAS	18m + Lot Width	ELEVATIONS Scale 1:100	<div>G.J. Gardner.</div> <div>HOMES</div>
	DATE:	LIVING 260.1 m <sup>2</sup> GARAGE 39.5 m <sup>2</sup> ALFRESCO 30.0 m <sup>2</sup> PORTICO 5.7 m <sup>2</sup>			
	12/04/2023	TOTAL 335.3 m <sup>2</sup>			

# Element Series

NSW ONLY



NSW ONLY

These plans are for use in NSW only and do not comply with NCC 2022 Livable Housing Design requirements. Please refer to your state or territory regulations for further details.

PLANS ARE SUBJECT TO LOCAL COUNCIL & DEVELOPERS GUIDELINES (COVENANTS).

## MANDALAY 335

Resort Streetscape

Copyright© Archiman Pty Ltd exclusive To G.J. Gardner Homes  
Concept plans only, final working drawings may vary

### CONCEPT

DATE:

12/04/2023

### FLOOR AREAS

LIVING 260.1 m<sup>2</sup>  
GARAGE 39.5 m<sup>2</sup>  
ALFRESCO 30.0 m<sup>2</sup>  
PORTICO 5.7 m<sup>2</sup>

TOTAL 335.3 m<sup>2</sup>

### 18m + Lot Width

### ELEVATIONS Scale 1:100

G.J. Gardner.

HOMES

ELECTRICAL LEGEND

NOTE:  
ALL ELECTRICAL WORK MUST  
BE COMPLETED TO THE  
RELEVANT AUSTRALIAN  
STANDARDS AND THE  
NATIONAL CONSTRUCTION  
CODE OF AUSTRALIA.

LIGHTING \*EEF (denotes energy efficient light fittings)

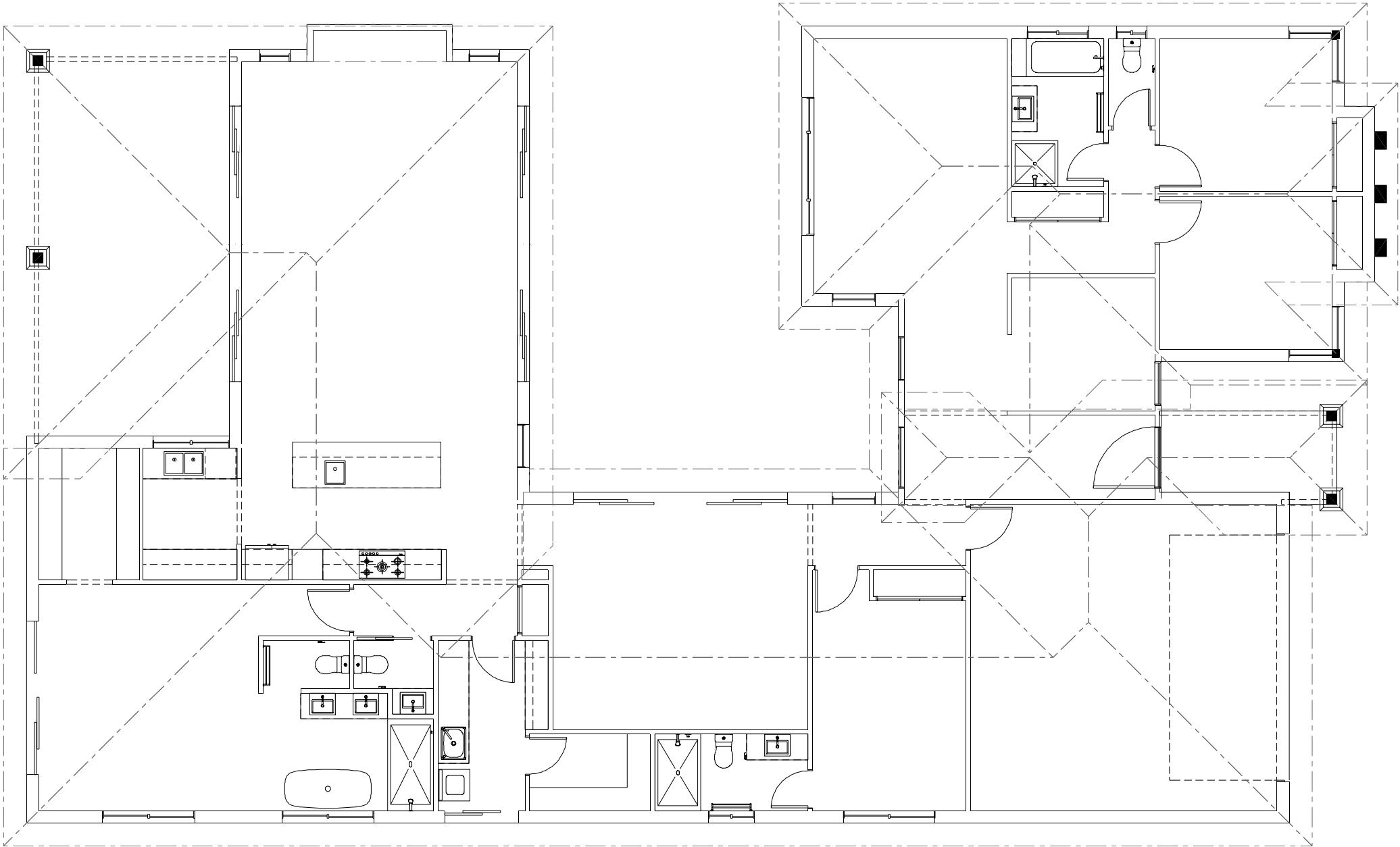
Symbol	Description	Spec.	Extra
	Ceiling Light *EEF	-	-
	Down Light *EEF	-	-
	Wall Light *EEF approx height	-	-
	Pendant / Track Light *EEF	-	-
	IXL Tastic (or similar)	-	-
	Batten Fluro Light *EEF	-	-
	Round Fluro Light *EEF	-	-
	Flood / Spot Light *EEF	-	-
TOTAL LIGHT POINTS		-	-

POWER

	Quad Power Point	-	-
	Single Power Point	-	-
	Double Power Point	-	-
	Double W/Proof Power Point	-	-
	Single W/Proof Power Point	-	-
	T.V. Point	-	-
	Phone Point	-	-
	T.V Antenna & Booster inc. SGPO	-	-
	Dishwasher Point	-	-
	Rangehood Point	-	-
	Microwave Point	-	-
	Oven Point	-	-
	Cook Top Iso point	-	-

MISCELLANEOUS

	Exhaust Fan	-	-
	Ceiling Fan (stainless steel)	-	-
	Ceiling Fan & Light (white) *EEF	-	-
	Meter Box	-	-
	Hot Water Service	-	-
	Smoke Detectors	-	-
	Dimmer Switch	-	-
	Two Way Switch	-	-
	A/C Condensor Iso Point	-	-



# Element Series

NSW ONLY

NSW ONLY

These plans are for use in NSW only and do not comply with NCC 2022 Livable Housing Design requirements.  
Please refer to your state or territory regulations for further details.

PLANS ARE SUBJECT TO LOCAL COUNCIL & DEVELOPERS GUIDELINES (COVENANTS).

<div>MANDALAY 335</div> <div>Resort Streetscape</div> <div>Copyright© Archiman Pty Ltd exclusive To G.J. Gardner Homes Concept plans only, final working drawings may vary</div>	CONCEPT	FLOOR AREAS	18m + Lot Width	ELECTRICAL PLAN Scale 1:100	<div>G.J. Gardner.</div> <div>HOMES</div>
	DATE: 12/04/2023	LIVING 260.1 m² GARAGE 39.5 m² ALFRESCO 30.0 m² PORTICO 5.7 m²			
		TOTAL 335.3 m²			