

# House & Land Package.



House and land package from \$677,000\*

Address: 848 Brompton, Brompton Life Cranbourne South

Inclusions:

- + Floor Coverings from our Express Range
- + Westinghouse 600mm Stainless Steel Appliances
- + Double Lock Up Garage with Internal Entry
- + 2.4 Ceiling Height, Window Locks and Flyscreens
- + Walk in Pantry
- + Alfresco

**Wishart 190 - Express Series**

4  2  2 

**Give us a call or drop in for a chat today.**

Office:

Mornington

5/234 Main Street, Mornington Victoria 3931

Mornington Peninsula Homes Pty Ltd, CDB-U 58234.

Eleonore Caruana

New Home Consultant

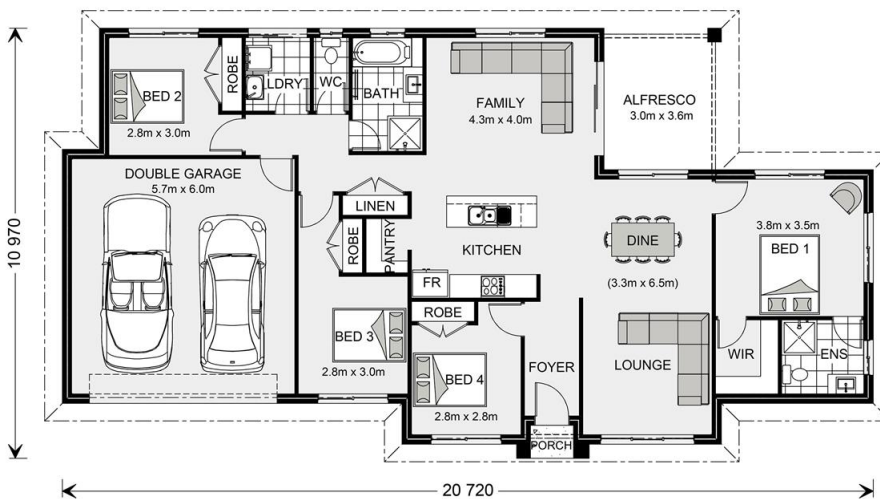
Call: 0448 011 141

Email: [eleonore.caruana@gjgardner.com.au](mailto:eleonore.caruana@gjgardner.com.au)

Call: (03) 5975 1122

Email: [mornington@gjgardner.com.au](mailto:mornington@gjgardner.com.au)

Or visit [gjgardner.com.au](http://gjgardner.com.au)



\*Images and photographs may depict fixtures, finishes and features either not supplied by G.J. Gardner Homes or not included in any price stated. These items include furniture, swimming pools, pool decks, fences, landscaping - including planter boxes, retaining walls, water features, pergolas, screens and decorative landscaping items such as fencing and outdoor kitchens and barbeques. For detailed home pricing, please talk to a new homes consultant.

Welcome **home.**

**G.J. Gardner.** HOMES