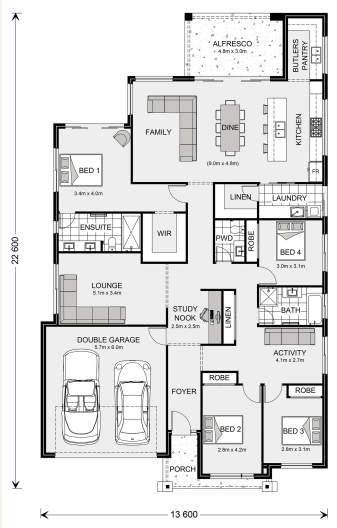


House and land package from \$517,390*

Address: 2066 TBC, South Ripley

Inclusions:

- +
- +
- +
- +
- +
- +



*Images and photographs may depict fixtures, finishes and features either not supplied by G.J. Gardner Homes or not included in any price stated. These items include furniture, swimming pools, pool decks, fences, landscaping - including planter boxes, retaining walls, water features, pergolas, screens and decorative landscaping items such as fencing and outdoor kitchens and barbecues. For detailed home pricing, please talk to a new homes consultant.

Newport 261 - Element Series



Give us a call or drop in for a chat today.

Office:

Springfield / Ripley

5/21 Technology Dr, Augustine Heights QLD 4300

QBCC: 1073307

Sandra McLaughlin

New Home Consultant

Call: 0428040669

Email: sandra.mclaughlin@gjgardner.com.au

Call: 07 3470 5666

Email: springfield@gjgardner.com.au

Or visit gjgardner.com.au

Welcome **home.**

G.J. Gardner. **HOMES**