



## House and land package from \$411,206\*

Address: 87 Morello Way, Epsom

### Inclusions:

- + Executive Facade
- + BAL 12.5 & Site Cost Allowance
- + Gas Ducted Heating & Evaporative Cooling
- + Exposed Aggregate Concrete to Driveway, Porch, Alfresco & Path
- + Carpet & Timber Look Vinyl Planks throughout
- + Brick Letterbox & Wall mounted Clothesline

## Bridgewater 205 - Element Series

4 2 2

**Give us a call or drop in for a chat today.**

### Office:

Bendigo

437 Hargreaves Street, Bendigo Victoria 3552

Bendigo Urban Investments Pty Ltd, CDB-U 58150.

**Matthew Barry**

New Home Consultant

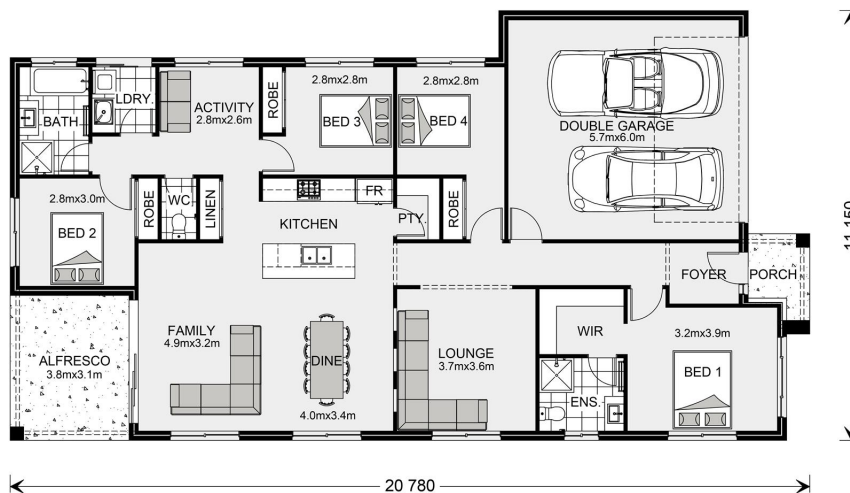
Call: 0418 696 009

Email: [matt.barry@gjgardner.com.au](mailto:matt.barry@gjgardner.com.au)

Call: 03 5442 2300

Email: [bendigo@gjgardner.com.au](mailto:bendigo@gjgardner.com.au)

Or visit [gjgardner.com.au](http://gjgardner.com.au)



\*Images and photographs may depict fixtures, finishes and features either not supplied by G.J. Gardner Homes or not included in any price stated. These items include furniture, swimming pools, pool decks, fences, landscaping - including planter boxes, retaining walls, water features, pergolas, screens and decorative landscaping items such as fencing and outdoor kitchens and barbeques. For detailed home pricing, please talk to a new homes consultant.

Welcome **home.**

**G.J. Gardner.** HOMES