

# House & Land Package.

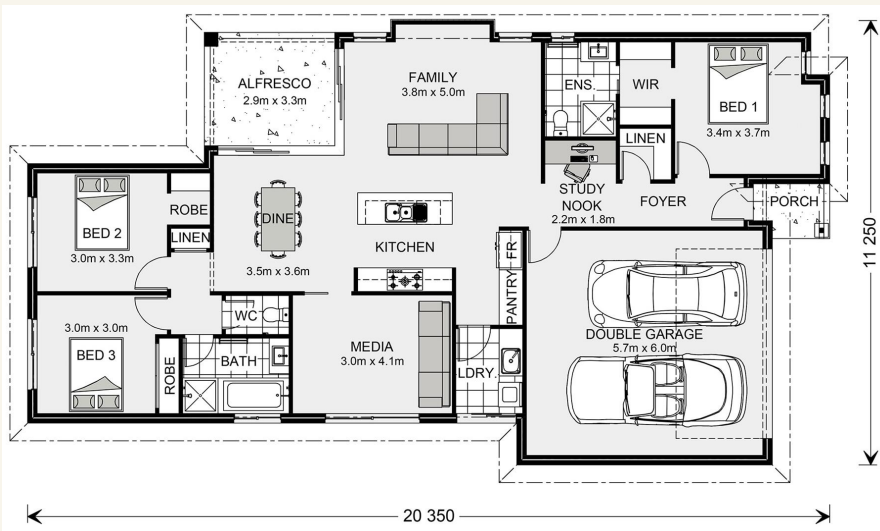


House and land package from \$375,067\*

Address: 3A Shirreff Ave, Stawell

Inclusions:

- + Classic Facade
- + Carpet & Tiles
- + Ducted Gas Heating & Evap Cooling
- + Roller Block Out blinds
- + Wall Mounted Clothesline
- + Steel Letterbox



\*Images and photographs may depict fixtures, finishes and features either not supplied by G.J. Gardner Homes or not included in any price stated. These items include furniture, swimming pools, pool decks, fences, landscaping - including planter boxes, retaining walls, water features, pergolas, screens and decorative landscaping items such as fencing and outdoor kitchens and barbeques. For detailed home pricing, please talk to a new homes consultant.

Coolum 187 - Element Series

3 2 2

Give us a call or drop in for a chat today.

Office:

Ararat  
92 Barkly Street, Ararat Vic 3377  
Jacorey Pty Ltd, CDB-U 49694.

Cathy Jennings

New Home Consultant

Call: +61419444781

Email: [cathy.jennings@gjgardner.com.au](mailto:cathy.jennings@gjgardner.com.au)

Call: 03 5352 3298

Email: [ararat@gjgardner.com.au](mailto:ararat@gjgardner.com.au)

Or visit [gjgardner.com.au](http://gjgardner.com.au)

Welcome **home.**

G.J. Gardner. **HOMES**