

# House & Land Package.



House and land package from \$394,689\*

Address: 6 Moonta Street, West Bendigo

Inclusions:

- + Driveway
- + Floor Coverings
- + Ducted Heating & Cooling
- + Stone Benches to Kitchen
- + 900mm Westinghouse Oven and Rangehood
- + Site Allowance and BAL 12.5

**Pacific 208 - Express Series**

4 2 2

**Give us a call or drop in for a chat today.**

Office:

Bendigo

437 Hargreaves Street, Bendigo Victoria 3552

Deb Wilson

New Home Consultant

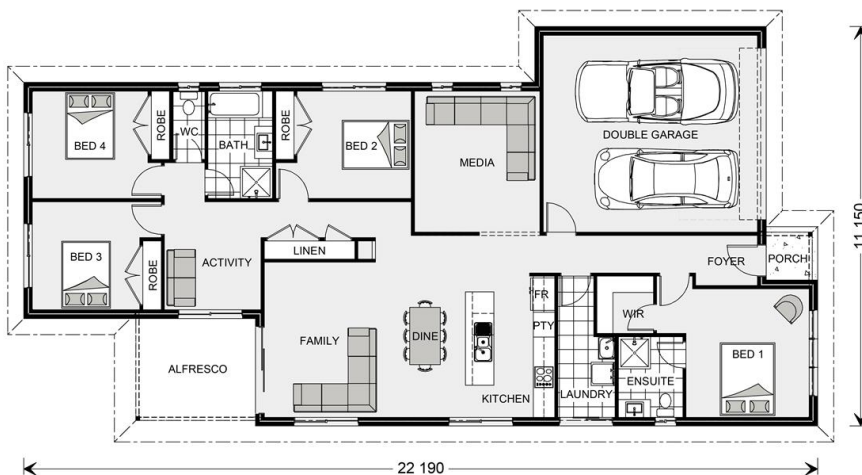
Call: 0407 983 501

Email: [deb.wilson@gjgardner.com.au](mailto:deb.wilson@gjgardner.com.au)

Call: 03 5442 2300

Email: [bendigo@gjgardner.com.au](mailto:bendigo@gjgardner.com.au)

Or visit [gjgardner.com.au](http://gjgardner.com.au)



\*Images and photographs may depict fixtures, finishes and features either not supplied by G.J. Gardner Homes or not included in any price stated. These items include furniture, swimming pools, pool decks, fences, landscaping - including planter boxes, retaining walls, water features, pergolas, screens and decorative landscaping items such as fencing and outdoor kitchens and barbeques. For detailed home pricing, please talk to a new homes consultant.

Welcome **home.**

**G.J. Gardner.** HOMES