

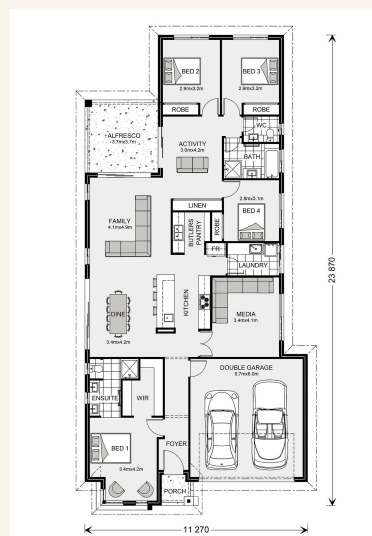


## House and land package from \$539,683\*

Address: 1505 Montezuma Terrace, The Outlook Estate, Dubbo

### Inclusions:

- + Ducted Reverse Cycle Airconditioning
- + 20mm EssaStone Benchtops
- + SMEG Appliances
- + Executive Facade
- + Window Coverings
- + Turf & Driveway



\*Images and photographs may depict fixtures, finishes and features either not supplied by G.J. Gardner Homes or not included in any price stated. These items include furniture, swimming pools, pool decks, fences, landscaping - including planter boxes, retaining walls, water features, pergolas, screens and decorative landscaping items such as fencing and outdoor kitchens and barbeques. For detailed home pricing, please talk to a new homes consultant.

## Benowa 230 - Element Series

4 2 2

**Give us a call or drop in for a chat today.**

### Office:

Dubbo  
118 Erskine St, Dubbo NSW 2830

### Nicole Stockings

New Home Consultant  
Call: 0428 401 072  
Email: [nicole.stockings@gjgardner.com.au](mailto:nicole.stockings@gjgardner.com.au)

### Kylie Semmler

Director  
Call: 0418 273 234  
Email: [kylie.semmler@gjgardner.com.au](mailto:kylie.semmler@gjgardner.com.au)

Call: 02 6882 4333  
Email: [dubbo@gjgardner.com.au](mailto:dubbo@gjgardner.com.au)  
Or visit [gjgardner.com.au](http://gjgardner.com.au)

Welcome **home.**

**G.J. Gardner.** HOMES