



House and land package from \$483,031*

Address: 1213 Milverton Cct, Oonoonba

Inclusions:

- + Split system Airconditioning throughout
- + Tiles to living areas & front porch, carpets to bedrooms & office
- + Custom kitchen with st/steel appl, OHC, bulkhead & pantry
- + Flick mixer tapware, tiled niches and polished edge mirrors
- + Landscaped to front including turf, garden bed, irrigation, driveway
- + Size: House 190 sqm Land 456 sqm

Melville NQ 187 - NQ Series

3 2 2

Give us a call or drop in for a chat today.

Office:

Townsville

Shop 18, Hyde Park Shopping Centre, 36 Kings Road, Hyde Park QLD 4812

QBCC: 1124158

Karen Jones

New Home Consultant

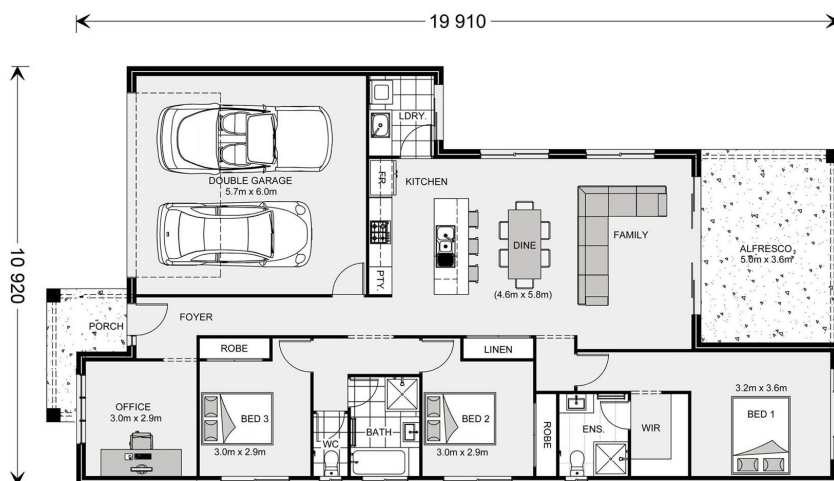
Call: 0409 107 003

Email: karen.jones@gjgardner.com.au

Call: 07 4775 5656

Email: townsville@gjgardner.com.au

Or visit gjgardner.com.au



*Images and photographs may depict fixtures, finishes and features either not supplied by G.J. Gardner Homes or not included in any price stated. These items include furniture, swimming pools, pool decks, fences, landscaping - including planter boxes, retaining walls, water features, pergolas, screens and decorative landscaping items such as fencing and outdoor kitchens and barbeques. For detailed home pricing, please talk to a new homes consultant.

Welcome **home.**

G.J. Gardner. HOMES