

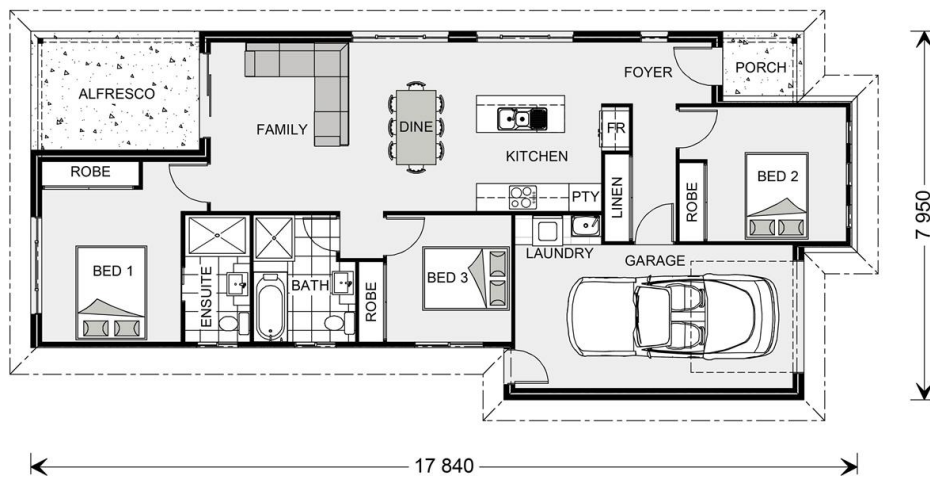


House and land package from \$342,899*

Address: 744 Leggett Cresc, The Village, Oonoonba

Inclusions:

- + 3 bedroom, 2 bathroom beautiful compact home
- + Split system air conditioning throughout
- + Tiles to living & front porch, carpet to bedrooms
- + Custom kitchen with quality stainless steel appliances
- + Landscaped fwd of house incl turf & garden bed, fencing & driveway
- + Size: House - 125sqm Land - 267sqm



Robina 125

3 2 1

Give us a call or drop in for a chat today.

Office:

Townsville
 Shop 18, Hyde Park Shopping Centre, 36 Kings Road, Hyde Park QLD 4812
 QBCC: 1124158

Randall Zahner

New Home Consultant

Call: 0403 671 712

Email: randall.zahner@gjgardner.com.au

Call: 07 4775 5656

Email: townsville@gjgardner.com.au

Or visit gjgardner.com.au

*Images and photographs may depict fixtures, finishes and features either not supplied by G.J. Gardner Homes or not included in any price stated. These items include furniture, swimming pools, pool decks, fences, landscaping - including planter boxes, retaining walls, water features, pergolas, screens and decorative landscaping items such as fencing and outdoor kitchens and barbeques. For detailed home pricing, please talk to a new homes consultant.

Welcome **home.**

G.J. Gardner. HOMES