



## House and land package from \$349,325\*

Address: 721 Bruslee St, Harris Crossing, Bohle Plains

### Inclusions:

- + Airconditioned throughout
- + Tiles to living areas & front portico, carpets to bedrooms
- + Open plan living opening to undercover Alfresco
- + Custom kitchen with quality stainless steel appliances
- + Fully fenced with Buffalo turf forward of house + driveway
- + Size: House - 125sqm Land - 400 sqm

## Robina 125 - Metro Series

3 2 1

**Give us a call or drop in for a chat today.**

### Office:

Townsville  
Shop 18, Hyde Park Shopping Centre, 36 Kings Road, Hyde Park QLD 4812

QBCC: 1124158

### Randall Zahner

New Home Consultant

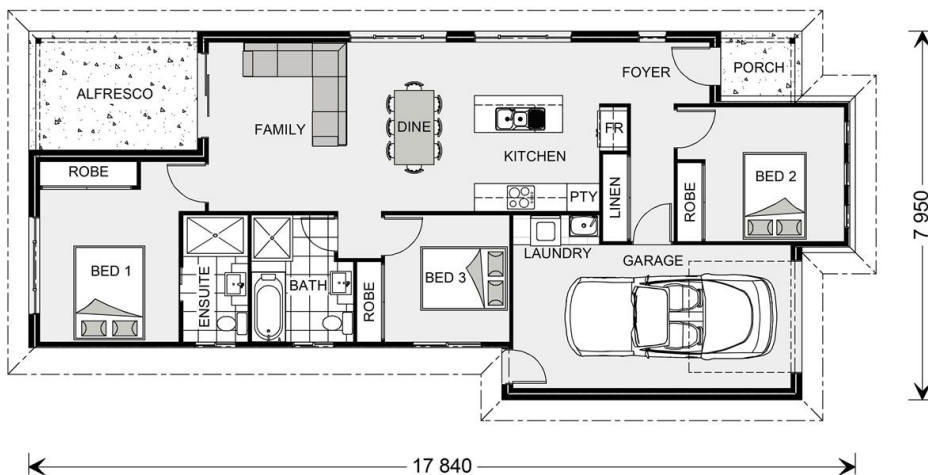
Call: 0403 671 712

Email: [randall.zahner@gjgardner.com.au](mailto:randall.zahner@gjgardner.com.au)

Call: 07 4775 5656

Email: [townsville@gjgardner.com.au](mailto:townsville@gjgardner.com.au)

Or visit [gjgardner.com.au](http://gjgardner.com.au)



\*Images and photographs may depict fixtures, finishes and features either not supplied by G.J. Gardner Homes or not included in any price stated. These items include furniture, swimming pools, pool decks, fences, landscaping - including planter boxes, retaining walls, water features, pergolas, screens and decorative landscaping items such as fencing and outdoor kitchens and barbeques. For detailed home pricing, please talk to a new homes consultant.

Welcome **home.**

**G.J. Gardner.** HOMES