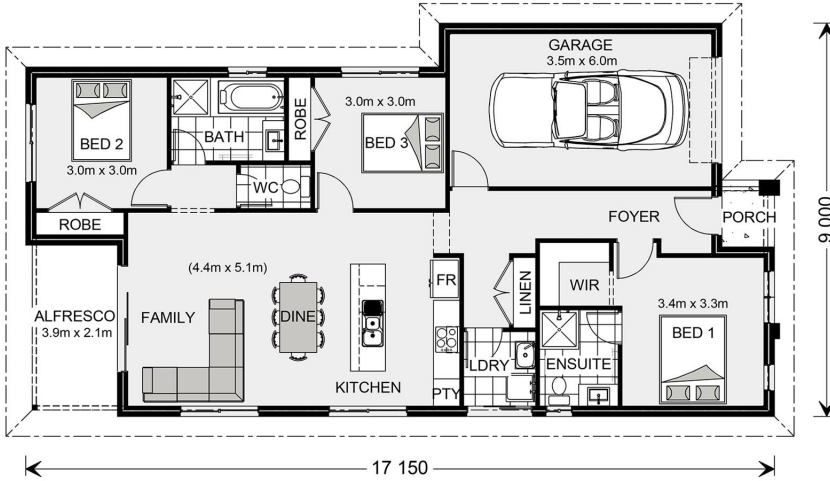


## House and land package from \$396,539\*

Address: 223 McLachlan Street, Bacchus Marsh

### Inclusions:

- + Reece Fittings and Fixtures
- + Turn Key Package with Metal Roof
- + Ducted Heating and Double Glazed Windows
- + Site Costs
- + Carpet, Laminate and Tiles throughout Home as nominated
- + Westinghouse Stainless Steel Appliances



\*Images and photographs may depict fixtures, finishes and features either not supplied by G.J. Gardner Homes or not included in any price stated. These items include furniture, swimming pools, pool decks, fences, landscaping - including planter boxes, retaining walls, water features, pergolas, screens and decorative landscaping items such as fencing and outdoor kitchens and barbeques. For detailed home pricing, please talk to a new homes consultant.

## Stonehaven 140 - Express Series

3 2 1

**Give us a call or drop in for a chat today.**

### Office:

Bacchus Marsh  
187 Main Street, Bacchus Marsh Vic 3340  
CDB57330

David Buchanan

New Home Consultant

Call: 0436 013 223

Email: david.buchanan@gjgardner.com.au

Louise Newton

New Home Consultant

Call: 0418 229 019

Email: louise.newton@gjgardner.com.au

Call: 5366 1550

Email: bacchusmarsh@gjgardner.com.au

Or visit [gjgardner.com.au](http://gjgardner.com.au)

Welcome **home.**

**G.J. Gardner.** HOMES