

**G.J. Gardner.**  
**HOMES**



**Bridgewater**

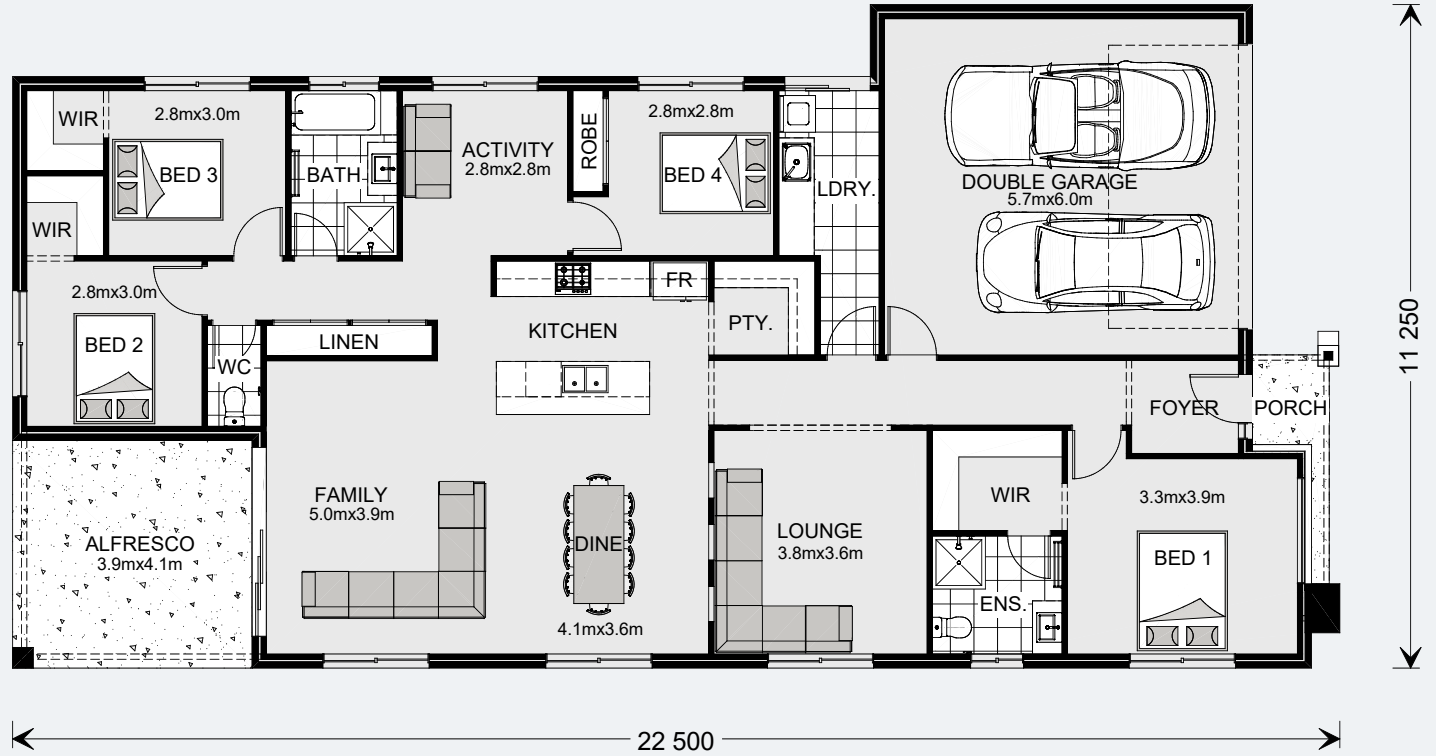
# Bridgewater 225

4 | 2 | 2

## Floor Area

Living	169.8 m <sup>2</sup>
Garage	37.4 m <sup>2</sup>
Alfresco	15.7 m <sup>2</sup>
Porch	2.7 m <sup>2</sup>
<b>Total</b>	<b>225.6 m<sup>2</sup></b>

225 Resort Floorplan



Images in this brochure may depict landscaping, fences and upgraded fixtures, features or finishes which are not included. For availability and pricing of these items please discuss with your new home consultant.

# Bridgewater 205

4 | 2 | 2

## Floor Area

Living	153.4 m <sup>2</sup>
Garage	37.4 m <sup>2</sup>
Alfresco	11.6 m <sup>2</sup>
Porch	2.7 m <sup>2</sup>
<b>Total</b>	<b>205.1 m<sup>2</sup></b>



205 Resort Floorplan

Images in this brochure may depict landscaping, fences and upgraded fixtures, features or finishes which are not included. For availability and pricing of these items please discuss with your new home consultant.

# Bridgewater 190

4 | 2 | 2

## Floor Area

Living	138.5 m <sup>2</sup>
Garage	37.4 m <sup>2</sup>
Alfresco	11.9 m <sup>2</sup>
Porch	2.4 m <sup>2</sup>
<b>Total</b>	<b>190.2 m<sup>2</sup></b>



190 Resort Floorplan

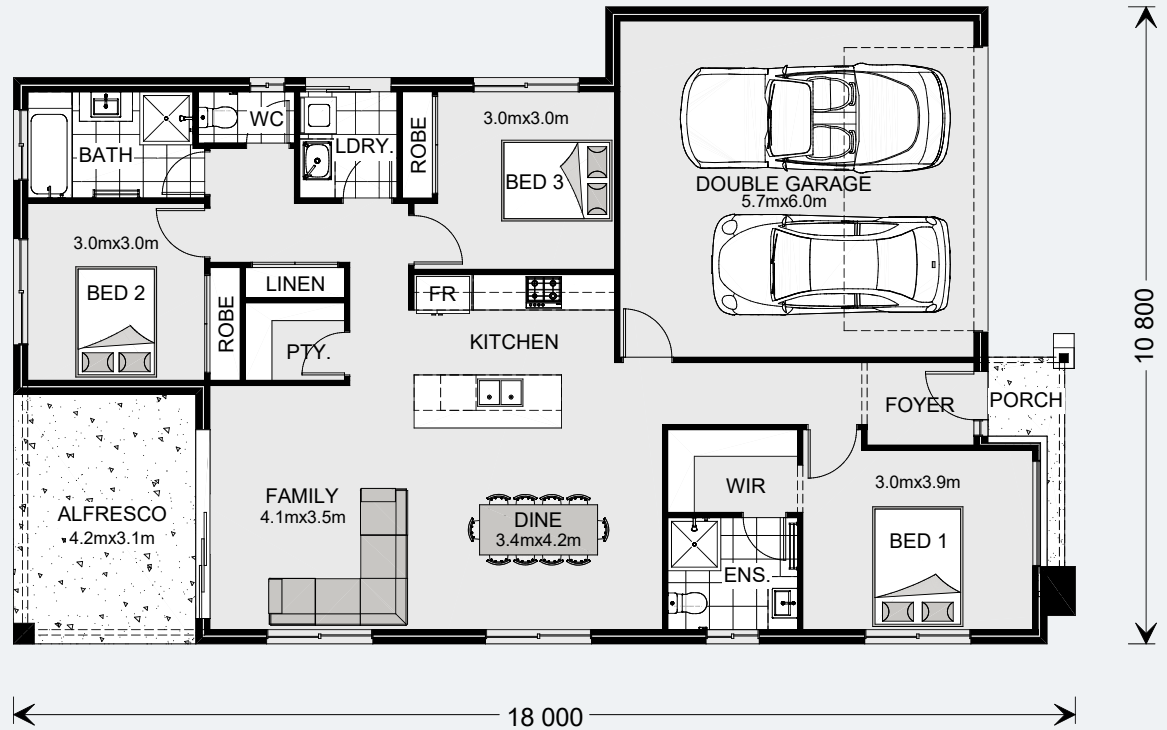
Images in this brochure may depict landscaping, fences and upgraded fixtures, features or finishes which are not included. For availability and pricing of these items please discuss with your new home consultant.

# Bridgewater 173

3 | 2 | 2

## Floor Area

Living	119.8 m <sup>2</sup>
Garage	37.4 m <sup>2</sup>
Alfresco	13.1 m <sup>2</sup>
Porch	2.4 m <sup>2</sup>
<b>Total</b>	<b>172.7 m<sup>2</sup></b>



173 Resort Floorplan

Images in this brochure may depict landscaping, fences and upgraded fixtures, features or finishes which are not included. For availability and pricing of these items please discuss with your new home consultant.

# Bridgewater

The Bridgewater Designs offer individually crafted facades that will inspire you by providing a choice of homes that reflect your personal lifestyle and preferences.

Exclusive to G.J. Gardner Homes, the Bridgewater features a superb blend of modern architectural interiors, quality fittings and inclusions and stylish outdoor entertaining. This is a home for the discerning buyer who wants clever design in tune with the needs of contemporary living. With its effortless connections throughout the home, here you can embrace both family time and easily find private space for relaxation.

An open plan family zone creates the perfect space for entertaining friends and family, with a central kitchen and walk-in-pantry overlooking the dining, family and alfresco areas. Plus, a separate lounge allows for the opportunity to escape and relax.

The master bedroom with well-appointed ensuite and walk in robe is privately positioned in the front of the home while at the rear is the kids zone with the additional bedrooms, central activity room and family bathroom.

Images in this brochure may depict landscaping, fences and upgraded fixtures, features or finishes which are not included. For availability and pricing of these items please discuss with your new home consultant.



# Bridgewater

MASTER BEDROOM



Images in this brochure may depict landscaping, fences and upgraded fixtures, features or finishes which are not included. For availability and pricing of these items please discuss with your new home consultant.

# Bridgewater

## KITCHEN



Images in this brochure may depict landscaping, fences and upgraded fixtures, features or finishes which are not included. For availability and pricing of these items please discuss with your new home consultant.



# Bridgewater

---

URBAN



Images in this brochure may depict landscaping, fences and upgraded fixtures, features or finishes which are not included. For availability and pricing of these items please discuss with your new home consultant.

# Bridgewater

EXECUTIVE



Images in this brochure may depict landscaping, fences and upgraded fixtures, features or finishes which are not included. For availability and pricing of these items please discuss with your new home consultant.

# Bridgewater

BEACH



Images in this brochure may depict landscaping, fences and upgraded fixtures, features or finishes which are not included. For availability and pricing of these items please discuss with your new home consultant.

# Bridgewater

CLASSIC



Images in this brochure may depict landscaping, fences and upgraded fixtures, features or finishes which are not included. For availability and pricing of these items please discuss with your new home consultant.

# Bridgewater

HAMPTONS



Images in this brochure may depict landscaping, fences and upgraded fixtures, features or finishes which are not included. For availability and pricing of these items please discuss with your new home consultant.

# Bridgewater

RESORT



Images in this brochure may depict landscaping, fences and upgraded fixtures, features or finishes which are not included. For availability and pricing of these items please discuss with your new home consultant.