

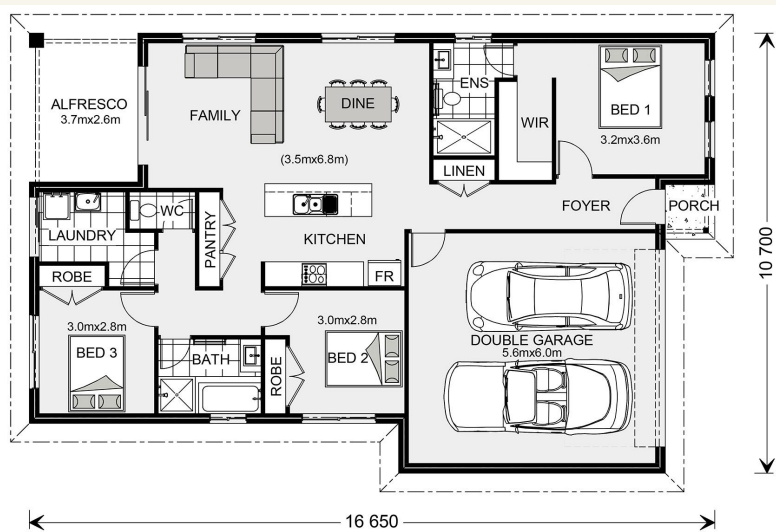


House and land package from \$326,215*

Address: Lot 10 Aramon Street, Nuriootpa (The Parkway)

Inclusions:

- + Stylish central Kitchen to entertain family and guests
- + Gourmet Kitchen including Island Bench Cupboard
- + Alfresco with Flooring
- + Garage with Panel Lift Door including Remote
- + Great Block, Great Locations - Block Size 450 Sq.m.
- + GJ Gardner Barossa -Your Local Builder



*Images and photographs may depict fixtures, finishes and features either not supplied by G.J. Gardner Homes or not included in any price stated. These items include furniture, swimming pools, pool decks, fences, landscaping - including planter boxes, retaining walls, water features, pergolas, screens and decorative landscaping items such as fencing and outdoor kitchens and barbeques. For detailed home pricing, please talk to a new homes consultant.

Nova 160 - Metro Series

3 2 2

Give us a call or drop in for a chat today.

Office:

Barossa
83-85 Murray St, Gawler SA 5118
BLD275969

Vicki Patterson

New Home Consultant

Call: 0447151034

Email: vicki.patterson@gjgardner.com.au

Call: (08) 8100 0770

Email: Mark.Horsburgh@gjgardner.com.au

Or visit gjgardner.com.au

Welcome **home.**

G.J. Gardner. HOMES