

# House & Land Package.

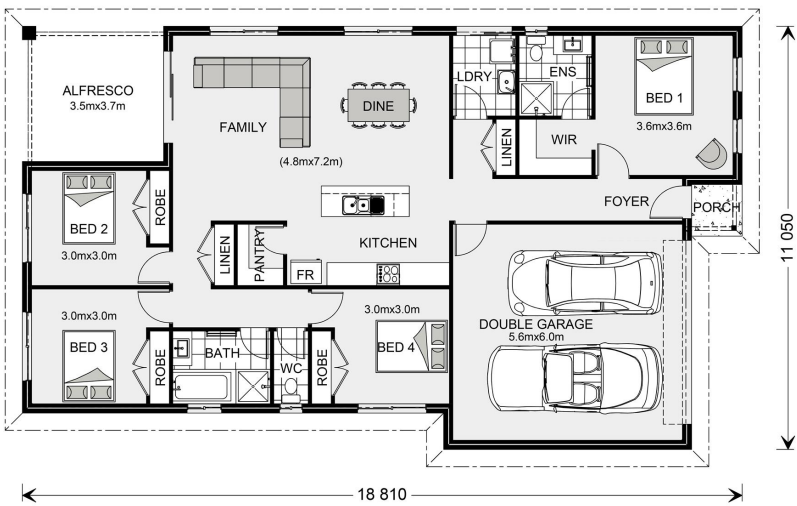


House and land package from \$292,724\*

Address: 38 Landy Street, Maffra

Inclusions:

- + Walk In Pantry
- + Hamptons Facade Upgrade
- + Split System Air Conditioner
- + Ducted heating
- + Flooring Included
- + Dowell Thermaline Double Glazed Windows



\*Images and photographs may depict fixtures, finishes and features either not supplied by G.J. Gardner Homes or not included in any price stated. These items include furniture, swimming pools, pool decks, fences, landscaping - including planter boxes, retaining walls, water features, pergolas, screens and decorative landscaping items such as fencing and outdoor kitchens and barbecues. For detailed home pricing, please talk to a new homes consultant.

**Nova 190 - Express Series**

4 2 2

**Give us a call or drop in for a chat today.**

Office:

Central Gippsland

85 Macarthur St, Sale VIC 3850

APR Constructions CDB-U 62062

Andrew Holmes

New Home Consultant

Call: 0437 681 762

Email: [andrew.holmes@gjgardner.com.au](mailto:andrew.holmes@gjgardner.com.au)

Call: 03 5143 1499

Email: [centralgippsland@gjgardner.com.au](mailto:centralgippsland@gjgardner.com.au)

Or visit [gjgardner.com.au](http://gjgardner.com.au)

Welcome **home.**

**G.J. Gardner.** **HOMES**