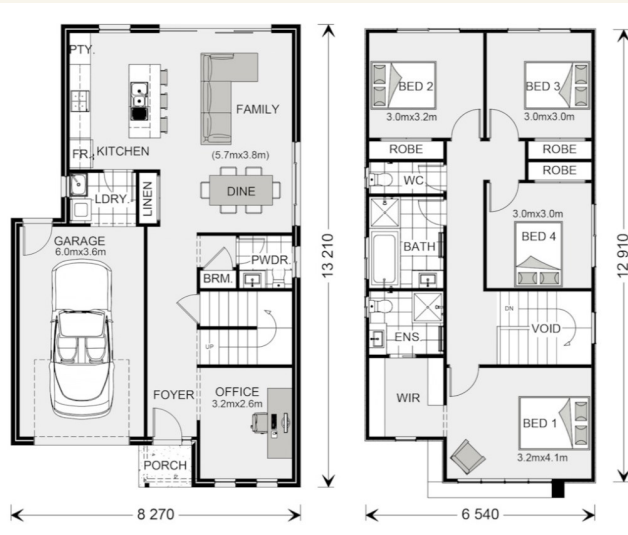


House and land package from \$634,950*

Address: \$2,500 FREE UPGRADES 728 Jervis St, Gregory Hills - The Heights

Inclusions:

- + \$2500 WORTH OF FREE UPGRADES
- + Standard Site Costs, Council Fees & BASIX
- + GJ Designer Range Inclusions Package
- + Tiled main areas & carpet in bedrooms
- + Fixed Price until 30 July 2020
- + House and Land subject to two separate contracts



*Images and photographs may depict fixtures, finishes and features either not supplied by G.J. Gardner Homes or not included in any price stated. These items include furniture, swimming pools, pool decks, fences, landscaping - including planter boxes, retaining walls, water features, pergolas, screens and decorative landscaping items such as fencing and outdoor kitchens and barbeques. For detailed home pricing, please talk to a new homes consultant.

Parkdale 179 - Express Series

4 2 1

Give us a call or drop in for a chat today.

Office:

Sydney - Liverpool
246 Edmondson Ave, Austral NSW 2179
244464C

Gonzalo Valenzuela

New Home Consultant

Call: 0411 228 722

Email: gonzalo.valenzuela@gjgardner.com.au

Call: 02 9606 8697

Email: liverpool@gjgardner.com.au

Or visit gjgardner.com.au

Welcome **home.**

G.J. Gardner. **HOMES**