

House & Land Package.



House and land package from \$376,127*

Address: 75, 1 Papworth Drive, Sale

Inclusions:

- + Parent's Retreat
- + Driveway and Crossover Included
- + Upgrade to Hamptons Facade
- + Harmony Vinyl Plank to Foyer, Hallways, Family, Lounge, Kitchen and Dining
- + Carpet to Bedrooms 1,2,3,4 Including Parents Retreat and Robes
- + Dowell Double Glazed Thermaline Windows

Brighton 195 - Express Series

4  2  2 

Give us a call or drop in for a chat today.

Office:

Central Gippsland
85 Macarthur St, Sale VIC 3850
APR Constructions CDB-U 62062

Andrew Holmes

New Home Consultant

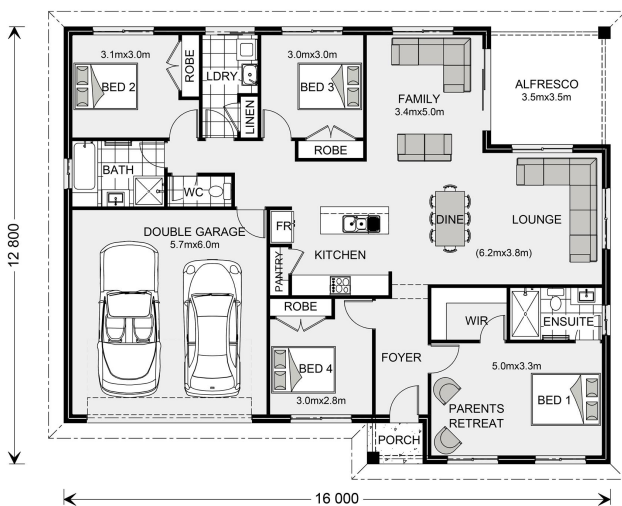
Call: 0437 681 762

Email: andrew.holmes@gjgardner.com.au

Call: 03 5143 1499

Email: centralgippsland@gjgardner.com.au

Or visit gjgardner.com.au



*Images and photographs may depict fixtures, finishes and features either not supplied by G.J. Gardner Homes or not included in any price stated. These items include furniture, swimming pools, pool decks, fences, landscaping - including planter boxes, retaining walls, water features, pergolas, screens and decorative landscaping items such as fencing and outdoor kitchens and barbeques. For detailed home pricing, please talk to a new homes consultant.

Welcome **home.**

G.J. Gardner. **HOMES**