

House & Land Package.



House and land package from \$477,048*

Address: 159 Wynd Street, Sale

Inclusions:

- + Meals
- + Media
- + Separate Kids Zone
- + Carpet to Bedrooms and Media
- + Vinyl Plank To Foyer, Hallways, activity, Lounge, Family, Dine and Kit
- + Urban Facade

La Trobe 253 - Express Series

4 2 2

Give us a call or drop in for a chat today.

Office:

Central Gippsland
85 Macarthur St, Sale VIC 3850
APR Constructions CDB-U 62062

Andrew Holmes

New Home Consultant

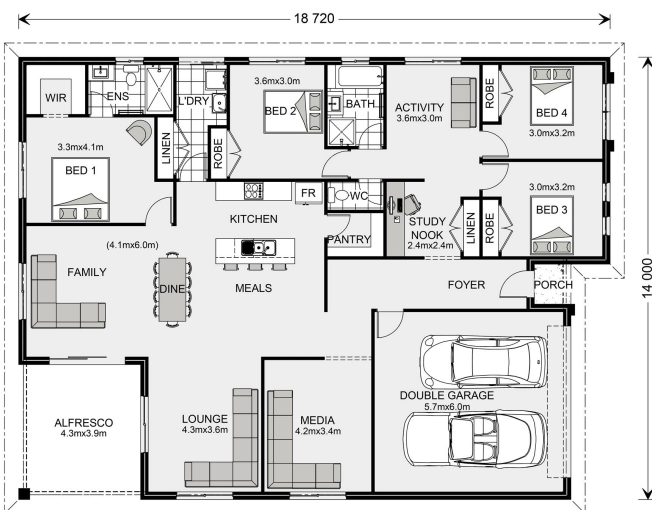
Call: 0437 681 762

Email: andrew.holmes@gjgardner.com.au

Call: 03 5143 1499

Email: centralgippsland@gjgardner.com.au

Or visit gjgardner.com.au



*Images and photographs may depict fixtures, finishes and features either not supplied by G.J. Gardner Homes or not included in any price stated. These items include furniture, swimming pools, pool decks, fences, landscaping - including planter boxes, retaining walls, water features, pergolas, screens and decorative landscaping items such as fencing and outdoor kitchens and barbecues. For detailed home pricing, please talk to a new homes consultant.

Welcome **home.**

G.J. Gardner. **HOMES**