



House and land package from \$418,484*

Address: #1072 Periwinkle Way, Kalynda Chase, Bohle Plains

Inclusions:

- + Split system Airconditioning throughout
- + Tiles to living areas & front porch, carpet to Bedrooms and Media
- + Custom Kitchen with st/steel appl, Island bench, OHC & bulkhead over
- + Security screens to all windows and glass sliding doors
- + Fully landscaped incl. turf, garden bed, fencing and driveway
- + Size: House- 205 sqm Land- 480 sqm

Pacific

4 2 2

Give us a call or drop in for a chat today.

Office:

Townsville
 Shop 18, Hyde Park Shopping Centre, 36 Kings Road, Hyde Park QLD 4812
 QBCC: 1124158

Dean Guilfoyle

New Home Consultant

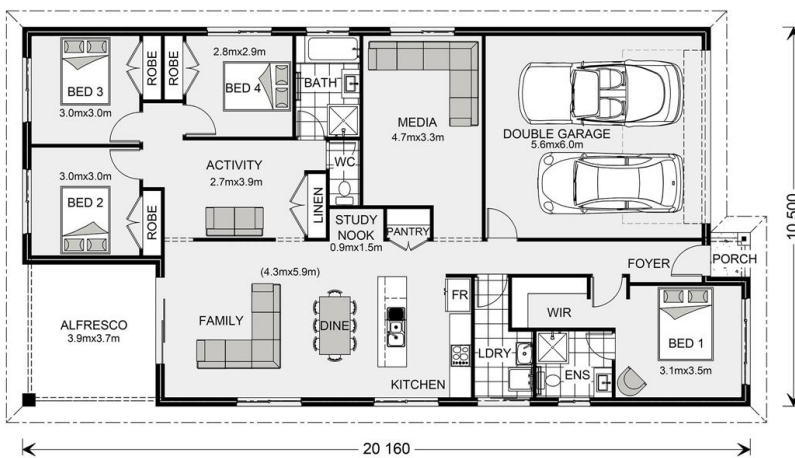
Call: 0438 821 095

Email: dean.guilfoyle@gjgardner.com.au

Call: 07 4775 5656

Email: townsville@gjgardner.com.au

Or visit gjgardner.com.au



*Images and photographs may depict fixtures, finishes and features either not supplied by G.J. Gardner Homes or not included in any price stated. These items include furniture, swimming pools, pool decks, fences, landscaping - including planter boxes, retaining walls, water features, pergolas, screens and decorative landscaping items such as fencing and outdoor kitchens and barbeques. For detailed home pricing, please talk to a new homes consultant.

Welcome **home.**

G.J. Gardner. HOMES