

House & Land Package.



House and land package from \$839,468*

Address: 5 Kestrel Court , Sale

Inclusions:

- + Rumpus
- + 40mm Caesar Stone to Kitchen
- + 20mm Caesar Stone to Bathroom/WC/Ens/Powder Room
- + 2550 Ceiling Height
- + Coloured Concrete to Alfresco and Porch
- + AEG Appliances

Somerset 340 - Prestige Series

5  2  2 

Give us a call or drop in for a chat today.

Office:

Central Gippsland

85 Macarthur St, Sale VIC 3850

APR Constructions CDB-U 62062

Andrew Holmes

New Home Consultant

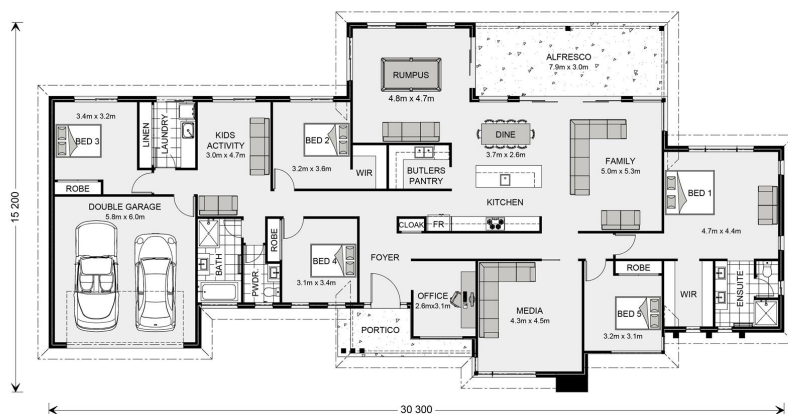
Call: 0437 681 762

Email: andrew.holmes@gjgardner.com.au

Call: 03 5143 1499

Email: centralgippsland@gjgardner.com.au

Or visit gjgardner.com.au



*Images and photographs may depict fixtures, finishes and features either not supplied by G.J. Gardner Homes or not included in any price stated. These items include furniture, swimming pools, pool decks, fences, landscaping - including planter boxes, retaining walls, water features, pergolas, screens and decorative landscaping items such as fencing and outdoor kitchens and barbeques. For detailed home pricing, please talk to a new homes consultant.

Welcome **home.**

G.J. Gardner. **HOMES**