



House and land package from \$376,209*

Address: 17 Ruthberg Drive, Sale

Inclusions:

- + Plain Concrete Driveway and Crossover Included
- + Harmony Vinyl Plank and Carpet Through-Out
- + Upgrade to Resort Facade
- + Dowell Thermaline (Thermal Broken) Double Glazed Windows
- + 450mm Eaves
- + Concrete Raft Slab to M Class Specifications

Beachlands 187 - Element Series



Give us a call or drop in for a chat today.

Office:

Central Gippsland
85 Macarthur St, Sale VIC 3850
APR Constructions CDB-U 62062

Andrew Holmes

New Home Consultant

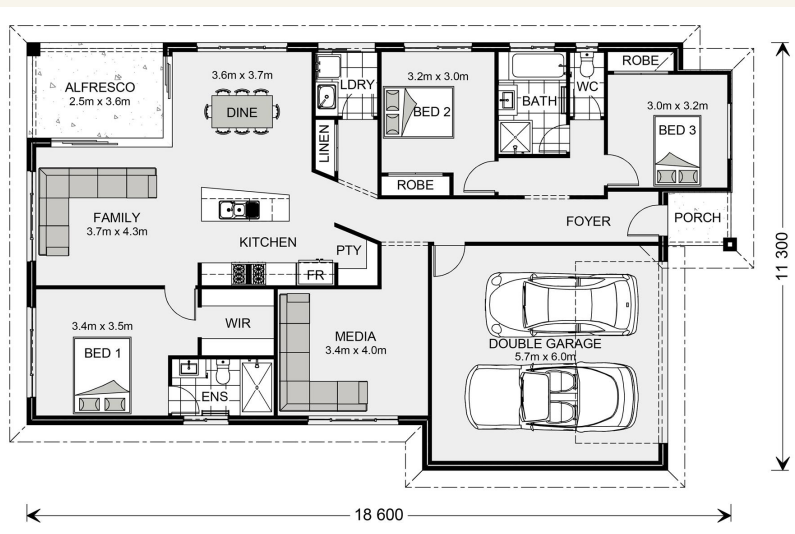
Call: 0437 681 762

Email: andrew.holmes@gjgardner.com.au

Call: 03 5143 1499

Email: centralgippsland@gjgardner.com.au

Or visit gjgardner.com.au



*Images and photographs may depict fixtures, finishes and features either not supplied by G.J. Gardner Homes or not included in any price stated. These items include furniture, swimming pools, pool decks, fences, landscaping - including planter boxes, retaining walls, water features, pergolas, screens and decorative landscaping items such as fencing and outdoor kitchens and barbeques. For detailed home pricing, please talk to a new homes consultant.

Welcome **home.**

G.J. Gardner. HOMES