



House and land package from \$434,550*

Address: #29 Splendour Circuit, Elliot Springs, Julago

Inclusions:

- + Split system air conditioned throughout
- + Tiles to living and front portico, carpet to bedrooms and lounge
- + Custom kitchen with st/steel appliances & island bench
- + Security screens to all windows and sliding glass doors
- + Complete landscape package incl turf, garden bed, fencing and driveway
- + Size: House- 229 sqm Land- 438 sqm

Portside 229

4 2 2

Give us a call or drop in for a chat today.

Office:

Townsville
 Shop 18, Hyde Park Shopping Centre, 36 Kings Road, Hyde Park QLD 4812
 QBCC: 1124158

Karen Jones

New Home Consultant

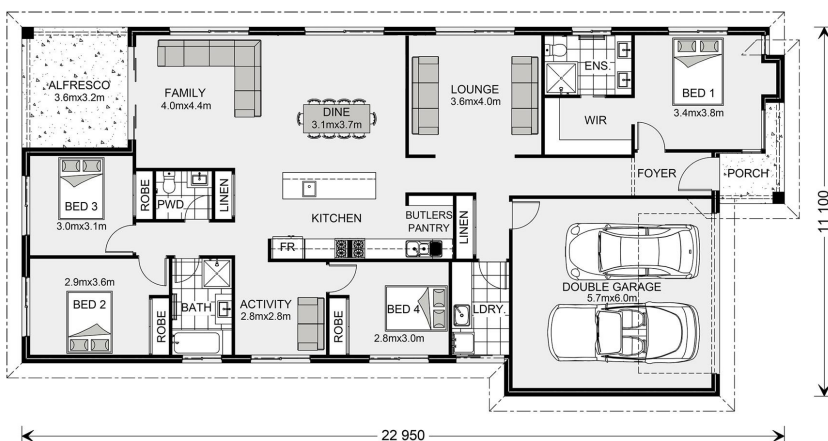
Call: 0409 107 003

Email: karen.jones@gjgardner.com.au

Call: 07 4775 5656

Email: townsville@gjgardner.com.au

Or visit gjgardner.com.au



*Images and photographs may depict fixtures, finishes and features either not supplied by G.J. Gardner Homes or not included in any price stated. These items include furniture, swimming pools, pool decks, fences, landscaping - including planter boxes, retaining walls, water features, pergolas, screens and decorative landscaping items such as fencing and outdoor kitchens and barbeques. For detailed home pricing, please talk to a new homes consultant.

Welcome **home.**

G.J. Gardner. HOMES