

House and land package from \$400,338*

Address: #152 Salonika Circuit, Bayside, Bushland Beach

Inclusions:

- + BEAUTIFUL WIDE BLOCK
- + Air-conditioned throughout
- + Tiles to living & front porch, carpet to beds & lounge
- + Custom kitchen with quality stainless steel appliances
- + Fully landscaped incl turf, garden bed, fencing and driveway
- + Size: House- 184 sqm Land- 622 sqm

Bridgewater - Estate Series

4  2  2 

Give us a call or drop in for a chat today.

Office:

Townsville

Shop 18, Hyde Park Shopping Centre, 36 Kings Road, Hyde Park QLD 4812

QBCC: 1124158

Karen Jones

New Home Consultant

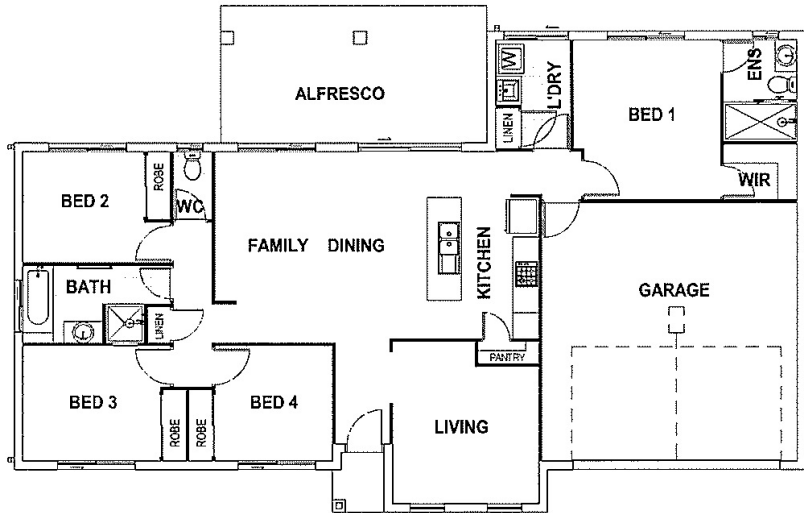
Call: 0409 107 003

Email: karen.jones@gjgardner.com.au

Call: 07 4775 5656

Email: townsville@gjgardner.com.au

Or visit gjgardner.com.au



*Images and photographs may depict fixtures, finishes and features either not supplied by G.J. Gardner Homes or not included in any price stated. These items include furniture, swimming pools, pool decks, fences, landscaping - including planter boxes, retaining walls, water features, pergolas, screens and decorative landscaping items such as fencing and outdoor kitchens and barbeques. For detailed home pricing, please talk to a new homes consultant.

Welcome **home.**

G.J. Gardner. HOMES