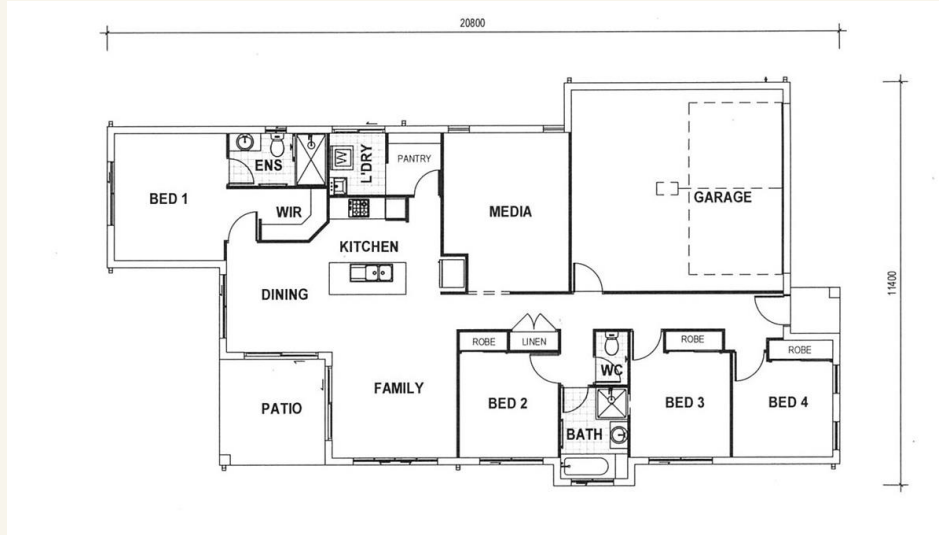


House and land package from \$394,270*

Address: #146 Salonika Cct, Bushland Beach

Inclusions:

- + CLOSE TO BEACH AND SHOPS!
- + Cleverly designed 4 bed home - Master with ensuite and WIR
- + Plenty of storage space, BIR + linen & Walk in Pantry
- + Tiles to main living and portico, carpet to bedrooms and lounge
- + Fully landscaped incl turf, garden bed, irrigation fencing & driveway
- + Size: House- 186 sqm Land- 501 sqm



*Images and photographs may depict fixtures, finishes and features either not supplied by G.J. Gardner Homes or not included in any price stated. These items include furniture, swimming pools, pool decks, fences, landscaping - including planter boxes, retaining walls, water features, pergolas, screens and decorative landscaping items such as fencing and outdoor kitchens and barbeques. For detailed home pricing, please talk to a new homes consultant.

Edgewater 186

4 2 2

Give us a call or drop in for a chat today.

Office:

Townsville

Shop 18, Hyde Park Shopping Centre, 36 Kings Road, Hyde Park QLD 4812

QBCC: 1124158

Dean Guilfoyle

New Home Consultant

Call: 0438 821 095

Email: dean.guilfoyle@gjgardner.com.au

Call: 07 4775 5656

Email: townsville@gjgardner.com.au

Or visit gjgardner.com.au

Welcome **home.**

G.J. Gardner. HOMES