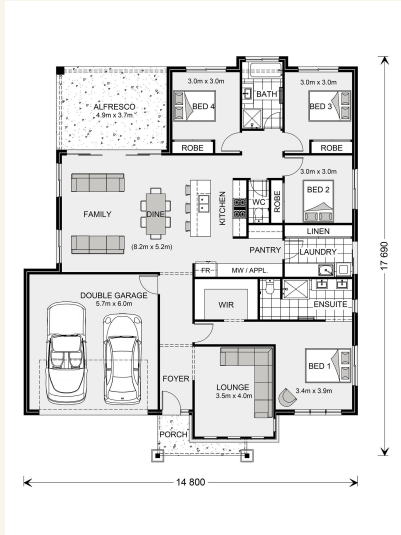


House and land package from \$485,960*

Address: #22 Pomelo St, The Orchard, Jensen

Inclusions:

- + Tiles to living & front porch, carpet to beds & Media
- + Split system airconditioners throughout
- + Custom Kitchen with st/steel appliances, Island bench & Butlers pantry
- + Expansive undercover alfresco for indoor/outdoor tropical living
- + Inclusive of single and double side access gates
- + Size: House- 225sqm Land- 1000sqm



*Images and photographs may depict fixtures, finishes and features either not supplied by G.J. Gardner Homes or not included in any price stated. These items include furniture, swimming pools, pool decks, fences, landscaping - including planter boxes, retaining walls, water features, pergolas, screens and decorative landscaping items such as fencing and outdoor kitchens and barbeques. For detailed home pricing, please talk to a new homes consultant.

Glenview 225 - Element Series

4 2 2

Give us a call or drop in for a chat today.

Office:

Townsville

Shop 18, Hyde Park Shopping Centre, 36 Kings Road, Hyde Park QLD 4812

QBCC: 1124158

Monique Petersen

New Home Consultant

Call: 0450 955 736

Email: monique.petersen@gjgardner.com.au

Call: 07 4775 5656

Email: townsville@gjgardner.com.au

Or visit gjgardner.com.au

Welcome **home.**

G.J. Gardner. HOMES