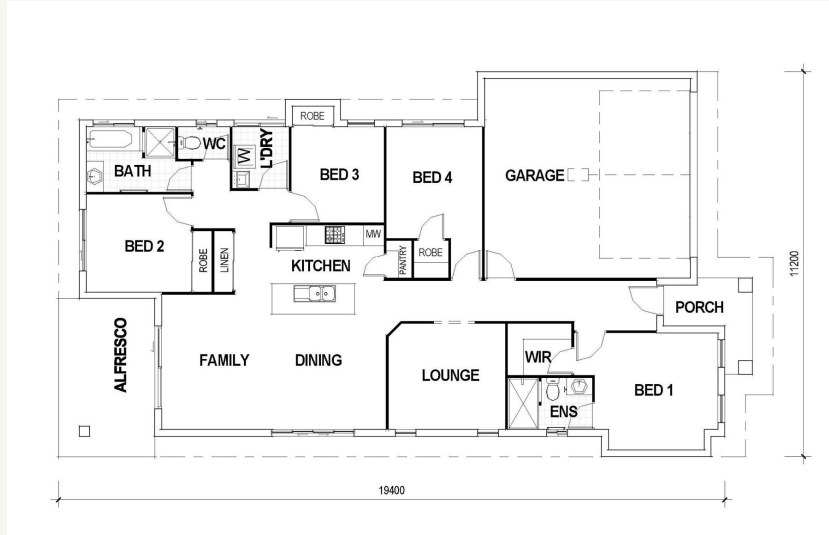


House and land package from \$406,057*

Address: #742 Leggett Cresc, The Village, Oonoonba

Inclusions:

- + 4 bedroom home with WIR and Ensuite to Master, plus separate lounge
- + Split system air conditioning throughout
- + Tiles to living and front porch, carpet to beds and lounge
- + Flick mixer tapware, tiled niches and polished edge mirrors
- + Landscaping fwd of house incl turf & garden bed + fencing and driveway
- + Size: House 187qm Land 339sqm



*Images and photographs may depict fixtures, finishes and features either not supplied by G.J. Gardner Homes or not included in any price stated. These items include furniture, swimming pools, pool decks, fences, landscaping - including planter boxes, retaining walls, water features, pergolas, screens and decorative landscaping items such as fencing and outdoor kitchens and barbeques. For detailed home pricing, please talk to a new homes consultant.

Bridgewater NQ 187 - NQ Series

4 2 2

Give us a call or drop in for a chat today.

Office:

Townsville

Shop 18, Hyde Park Shopping Centre, 36 Kings Road, Hyde Park QLD 4812

QBCC: 1124158

Kya Faust

New Home Consultant

Call: 0432 486 900

Email: kya.faust@gjgardner.com.au

Call: 07 4775 5656

Email: townsville@gjgardner.com.au

Or visit gjgardner.com.au

Welcome **home.**

G.J. Gardner. HOMES