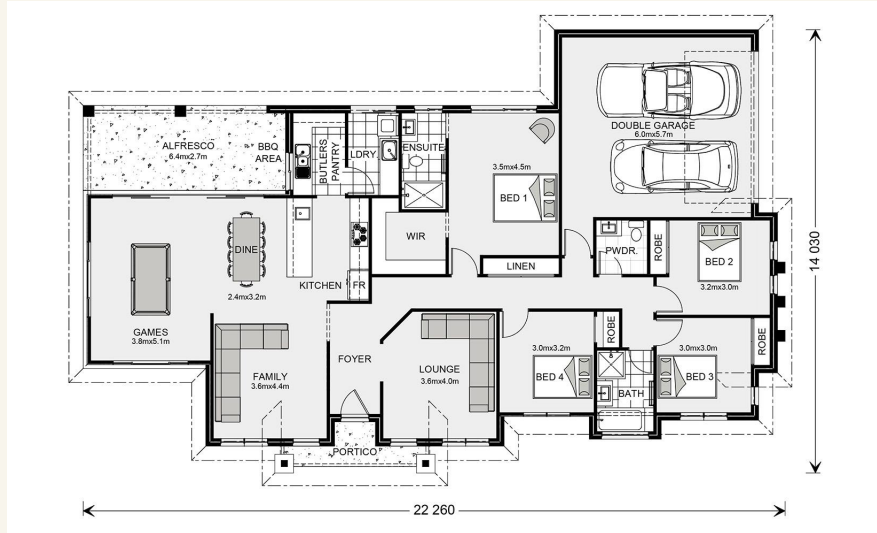


House and land package from \$588,307*

Address: #41 Larmona St, Burdell

Inclusions:

- + Fujitsu split system air conditioners throughout
- + Designer selection floorcoverings
- + Designer kitchen with custom cabinetry, SMEG appliances, stone benches
- + Spacious Master suite with ensuite and large walk in robe
- + Landscaped to full frontage Zoysia turf, planter boxes, fencing
- + Size: House 237sqm Land 1059sqm



*Images and photographs may depict fixtures, finishes and features either not supplied by G.J. Gardner Homes or not included in any price stated. These items include furniture, swimming pools, pool decks, fences, landscaping - including planter boxes, retaining walls, water features, pergolas, screens and decorative landscaping items such as fencing and outdoor kitchens and barbeques. For detailed home pricing, please talk to a new homes consultant.

Mountain Views 237 - Estate Series

4 2 2

Give us a call or drop in for a chat today.

Office:

Townsville

Shop 18, Hyde Park Shopping Centre, 36 Kings Road, Hyde Park QLD 4812

QBCC: 1124158

Kya Faust

New Home Consultant

Call: 0432 486 900

Email: kya.faust@gjgardner.com.au

Call: 07 4775 5656

Email: townsville@gjgardner.com.au

Or visit gjgardner.com.au

Welcome **home.**

G.J. Gardner. **HOMES**