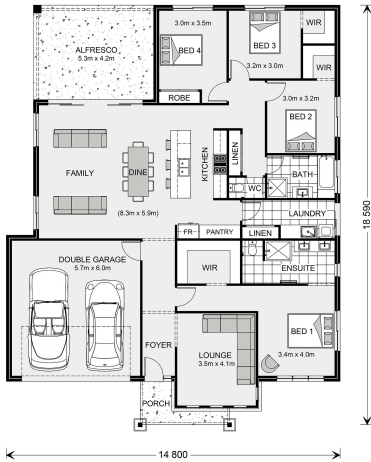


## House and land package from \$549,725\*

Address: #66 Eden Park Drive, Eden Park, Jensen

### Inclusions:

- + PRICE INCLUDES POOL AND DOUBLE BAY SHED!!!
- + Split system airconditioning throughout
- + Custom kitchen with st/steel appl., OHC & bulkheads
- + Carpet to Beds & Media/Lounge, tiles to main living & fr porch
- + Fully fenced with landscaping package by Maidment Developments
- + Size: House- 219 sqm Land- 2002 sqm



\*Images and photographs may depict fixtures, finishes and features either not supplied by G.J. Gardner Homes or not included in any price stated. These items include furniture, swimming pools, pool decks, fences, landscaping - including planter boxes, retaining walls, water features, pergolas, screens and decorative landscaping items such as fencing and outdoor kitchens and barbeques. For detailed home pricing, please talk to a new homes consultant.

## Fernbank 216 - Element Series



**Give us a call or drop in for a chat today.**

### Office:

Townsville

Shop 18, Hyde Park Shopping Centre, 36 Kings Road, Hyde Park QLD 4812

QBCC: 1124158

**Karen Jones**

**New Home Consultant**

**Call: 0409 107 003**

**Email: [karen.jones@gjgardner.com.au](mailto:karen.jones@gjgardner.com.au)**

**Call: 07 4775 5656**

**Email: [townsville@gjgardner.com.au](mailto:townsville@gjgardner.com.au)**

**Or visit [gjgardner.com.au](http://gjgardner.com.au)**

Welcome **home.**

**G.J. Gardner.** **HOMES**