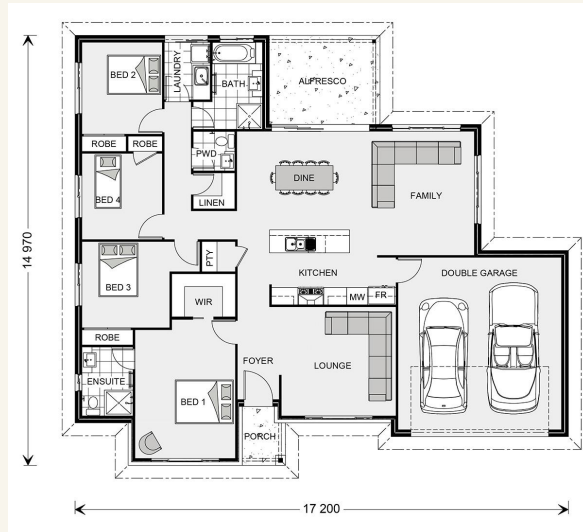


House and land package from \$481,968*

Address: #9 Dunlop St, Pinnacle Views, Kelso

Inclusions:

- + Tiles to living/front portico & rear alfresco, carpet to beds & lounge
- + Split system airconditioners throughout
- + Security screens to all windows and sliding doors
- + Exposed aggregate driveway
- + Fully fenced including double and single gates
- + Size: House- 209sqm Land- 2000sqm



*Images and photographs may depict fixtures, finishes and features either not supplied by G.J. Gardner Homes or not included in any price stated. These items include furniture, swimming pools, pool decks, fences, landscaping - including planter boxes, retaining walls, water features, pergolas, screens and decorative landscaping items such as fencing and outdoor kitchens and barbeques. For detailed home pricing, please talk to a new homes consultant.

Wide Bay 209

4 2 2

Give us a call or drop in for a chat today.

Office:

Townsville

Shop 18, Hyde Park Shopping Centre, 36 Kings Road, Hyde Park QLD 4812

QBCC: 1124158

Randall Zahner

New Home Consultant

Call: 0403 671 712

Email: randall.zahner@gjgardner.com.au

Call: 07 4775 5656

Email: townsville@gjgardner.com.au

Or visit gjgardner.com.au

Welcome **home.**

G.J. Gardner. **HOMES**