

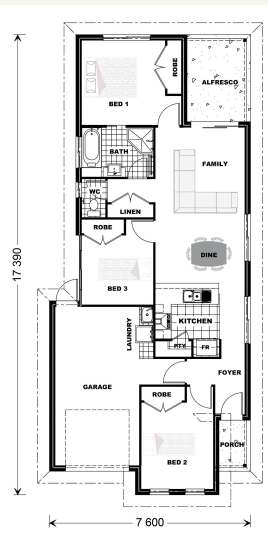


House and land package from \$298,963*

Address: #188 Conway St, Bushland Grove, Mount Low

Inclusions:

- + Airconditioned throughout
- + Tiles to living areas & front portico, carpets to bedrooms
- + Open plan living with 2 way bathroom to Master bed
- + Custom kitchen with quality stainless steel appliances
- + Fully fenced and landscaped with turf, irrigation & driveway
- + Size: House - 118sqm Land - 360 sqm



*Images and photographs may depict fixtures, finishes and features either not supplied by G.J. Gardner Homes or not included in any price stated. These items include furniture, swimming pools, pool decks, fences, landscaping - including planter boxes, retaining walls, water features, pergolas, screens and decorative landscaping items such as fencing and outdoor kitchens and barbeques. For detailed home pricing, please talk to a new homes consultant.

Robina 118

3 1 1

Give us a call or drop in for a chat today.

Office:

Townsville
 Shop 18, Hyde Park Shopping Centre, 36 Kings Road, Hyde Park QLD 4812
 QBCC: 1124158

Karen Jones

New Home Consultant
 Call: 0409 107 003
 Email: karen.jones@gjgardner.com.au

Call: 07 4775 5656
 Email: townsville@gjgardner.com.au
 Or visit gjgardner.com.au

Welcome **home.**

G.J. Gardner. HOMES