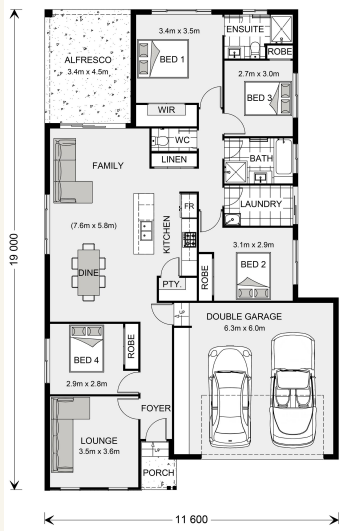


## House and land package from \$445,469\*

Address: #709 Bruslee St, Harris Crossing, Bohle Plains

### Inclusions:

- + Split system air conditioned throughout
- + Tiles to living & front portico, carpet to beds & Lounge
- + Custom Kitchen with quality st/steel appl, stone benchtop & lge pantry
- + Tiled niches, polished edge mirrors & flick mixer tapware to bathrooms
- + Fully landscaped incl turf, garden bed, fencing and driveway
- + Size: House- 194 sqm Land- 512 sqm



\*Images and photographs may depict fixtures, finishes and features either not supplied by G.J. Gardner Homes or not included in any price stated. These items include furniture, swimming pools, pool decks, fences, landscaping - including planter boxes, retaining walls, water features, pergolas, screens and decorative landscaping items such as fencing and outdoor kitchens and barbeques. For detailed home pricing, please talk to a new homes consultant.

## Oceanside - Element Series



**Give us a call or drop in for a chat today.**

### Office:

Townsville

Shop 18, Hyde Park Shopping Centre, 36 Kings Road, Hyde Park QLD 4812

QBCC: 1124158

Kya Faust

New Home Consultant

Call: 0432 486 900

Email: [kya.faust@gjgardner.com.au](mailto:kya.faust@gjgardner.com.au)

Call: 07 4775 5656

Email: [townsville@gjgardner.com.au](mailto:townsville@gjgardner.com.au)

Or visit [gjgardner.com.au](http://gjgardner.com.au)

Welcome **home.**

**G.J. Gardner.** **HOMES**