

House and land package from \$397,932*

Address: #50 Belvedere St, Elliot Springs, Julago

Inclusions:

- + Brilliant affordable 4 bedroom home, Master with ensuite & WIR
- + Split system airconditioning throughout
- + Tiles to living and front portico, carpet to bedrooms and lounge
- + Custom kitchen w stainless steel appliances
- + Complete landscape package incl turf, garden bed, fencing and driveway
- + Size: House- 186 sqm Land- 480 sqm

Edgewater 186

4  2  2 

Give us a call or drop in for a chat today.

Office:

Townsville

Shop 18, Hyde Park Shopping Centre, 36 Kings Road, Hyde Park QLD 4812

QBCC: 1124158

Monique Petersen

New Home Consultant

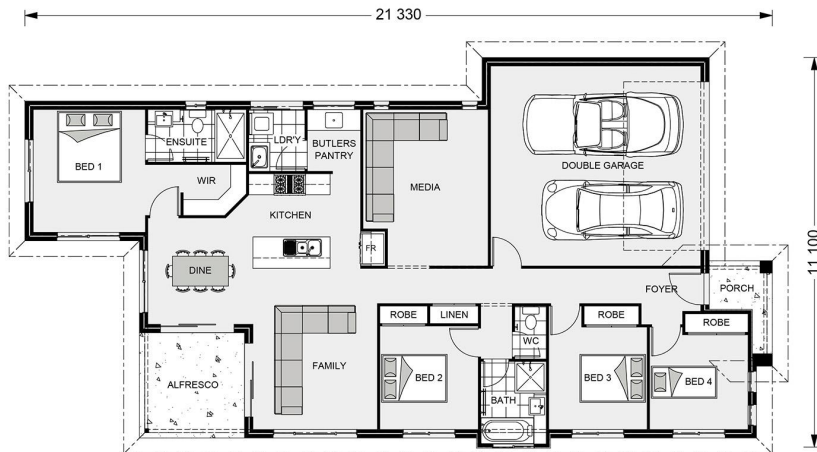
Call: 0450 955 736

Email: monique.petersen@gjgardner.com.au

Call: 07 4775 5656

Email: townsville@gjgardner.com.au

Or visit gjgardner.com.au



*Images and photographs may depict fixtures, finishes and features either not supplied by G.J. Gardner Homes or not included in any price stated. These items include furniture, swimming pools, pool decks, fences, landscaping - including planter boxes, retaining walls, water features, pergolas, screens and decorative landscaping items such as fencing and outdoor kitchens and barbeques. For detailed home pricing, please talk to a new homes consultant.

Welcome **home.**

G.J. Gardner. **HOMES**