

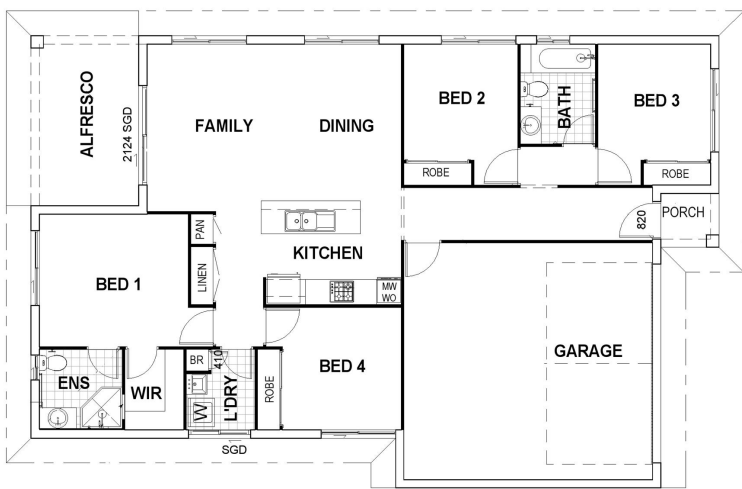


House and land package from \$336,852*

Address: #97 Barnfield St, Bushland Grove, Mount Low

Inclusions:

- + Air conditioned throughout
- + Tiles to living & front porch, carpet to bedrooms
- + Quality flickmixer tapware, tiled niches & polished edge mirrors
- + Custom kitchen with quality stainless steel appliances
- + L/scaping package incl full turf, garden bed, fencing & driveway
- + Size: House 168sqm Land 450sqm



*Images and photographs may depict fixtures, finishes and features either not supplied by G.J. Gardner Homes or not included in any price stated. These items include furniture, swimming pools, pool decks, fences, landscaping - including planter boxes, retaining walls, water features, pergolas, screens and decorative landscaping items such as fencing and outdoor kitchens and barbeques. For detailed home pricing, please talk to a new homes consultant.

Parkside 168 BLOCK

4 2 2

Give us a call or drop in for a chat today.

Office:

Townsville
 Shop 18, Hyde Park Shopping Centre, 36 Kings Road, Hyde Park QLD 4812
 QBCC: 1124158

Randall Zahner

New Home Consultant

Call: 0403 671 712

Email: randall.zahner@gjgardner.com.au

Call: 07 4775 5656

Email: townsville@gjgardner.com.au

Or visit gjgardner.com.au

Welcome **home.**

G.J. Gardner. HOMES