

# House & Land Package.



House and land package from \$408,807\*

Address: 33 Baldwin Drive, Traralgon

Inclusions:

- + Crossover & Driveway Allowance
- + Braemar Split system
- + Harmony Vinyl Planks & Carpet through-out
- + Double Glazed Windows
- + Executive Facade Upgrade
- + Express Inclusions

Pacific 205 - Express Series



Give us a call or drop in for a chat today.

Office:

Central Gippsland  
85 Macarthur St, Sale VIC 3850  
APR Constructions CDB-U 62062

Andrew Holmes

New Home Consultant

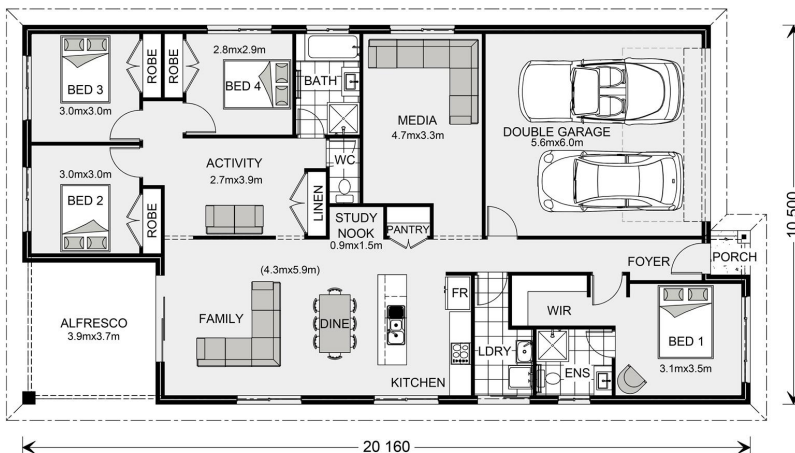
Call: 0437 681 762

Email: [andrew.holmes@gjgardner.com.au](mailto:andrew.holmes@gjgardner.com.au)

Call: 0408 968 858

Email: [centralgippsland@gjgardner.com.au](mailto:centralgippsland@gjgardner.com.au)

Or visit [gjgardner.com.au](http://gjgardner.com.au)



\*Images and photographs may depict fixtures, finishes and features either not supplied by G.J. Gardner Homes or not included in any price stated. These items include furniture, swimming pools, pool decks, fences, landscaping - including planter boxes, retaining walls, water features, pergolas, screens and decorative landscaping items such as fencing and outdoor kitchens and barbecues. For detailed home pricing, please talk to a new homes consultant.

Welcome **home.**

**G.J. Gardner.** HOMES