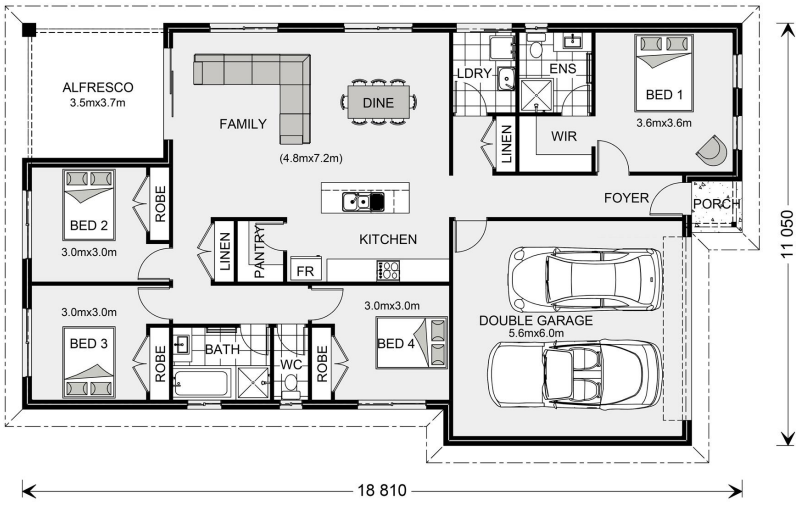


House and land package from \$327,808*

Address: 17 Findley Court, Stratford

Inclusions:

- + Upgrade to Hamptons Facade
- + Breamar Inverter Air Conditioner 7kw Cooling/8kw Heating
- + Ceiling Fans to All Bedrooms
- + Carpet Included to Bedrooms 1,2,3,4 and Robes
- + Carpet Inluded to Bedrooms 1,2,3,4 and Robes
- + Walk in Pantry



*Images and photographs may depict fixtures, finishes and features either not supplied by G.J. Gardner Homes or not included in any price stated. These items include furniture, swimming pools, pool decks, fences, landscaping - including planter boxes, retaining walls, water features, pergolas, screens and decorative landscaping items such as fencing and outdoor kitchens and barbeques. For detailed home pricing, please talk to a new homes consultant.

Nova 190 - Express Series



Give us a call or drop in for a chat today.

Office:

Central Gippsland
85 Macarthur St, Sale VIC 3850
APR Constructions CDB-U 62062

Andrew Holmes

New Home Consultant

Call: 0437 681 762

Email: andrew.holmes@gjgardner.com.au

Call: 0408 968 858

Email: centralgippsland@gjgardner.com.au

Or visit gjgardner.com.au

Welcome **home.**

G.J. Gardner. **HOMES**