

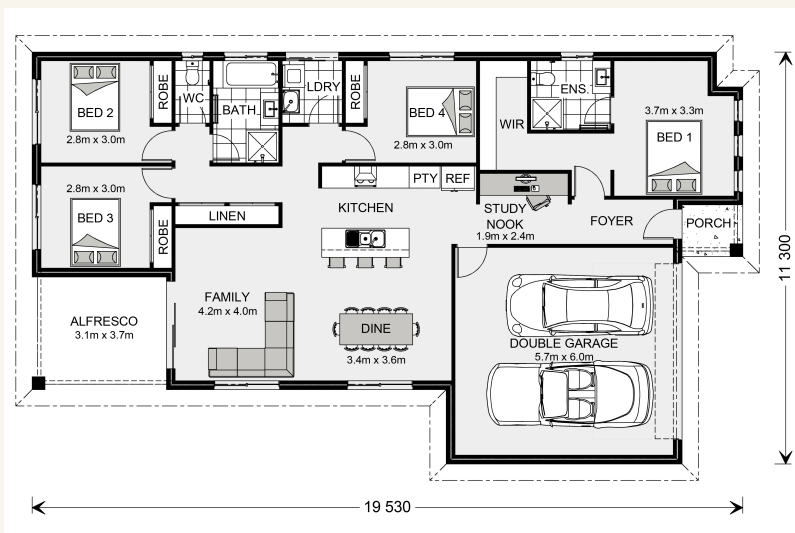


House and land package from \$545,900*

Address: 4616 PENDEREL DRIVE, MOUNT DUNEED

Inclusions:

- + 2550mm Ceilings
- + Double Glazed Windows
- + Floor Coverings throughout
- + LED d/lights to living areas
- + Ducted Heating
- + Site Costs Allowance



*Images and photographs may depict fixtures, finishes and features either not supplied by G.J. Gardner Homes or not included in any price stated. These items include furniture, swimming pools, pool decks, fences, landscaping - including planter boxes, retaining walls, water features, pergolas, screens and decorative landscaping items such as fencing and outdoor kitchens and barbecues. For detailed home pricing, please talk to a new homes consultant.

Woodridge 187 - Express Series

4 2 2

Give us a call or drop in for a chat today.

Office:

Geelong

228 Moorabool St, Geelong Vic 3220

Oakwood Plains Pty Ltd, CDB-U 54088.

Simon Marsh

New Home Consultant

Call: 0410 271 891

Email: simon.marsh@gjgardner.com.au

Simon Marsh

New Home Consultant

Call: 0410 271 891

Email: simon.marsh@gjgardner.com.au

Call: 03 5221 1447

Email: geelong@gjgardner.com.au

Or visit gjgardner.com.au

Welcome **home.**

G.J. Gardner. HOMES